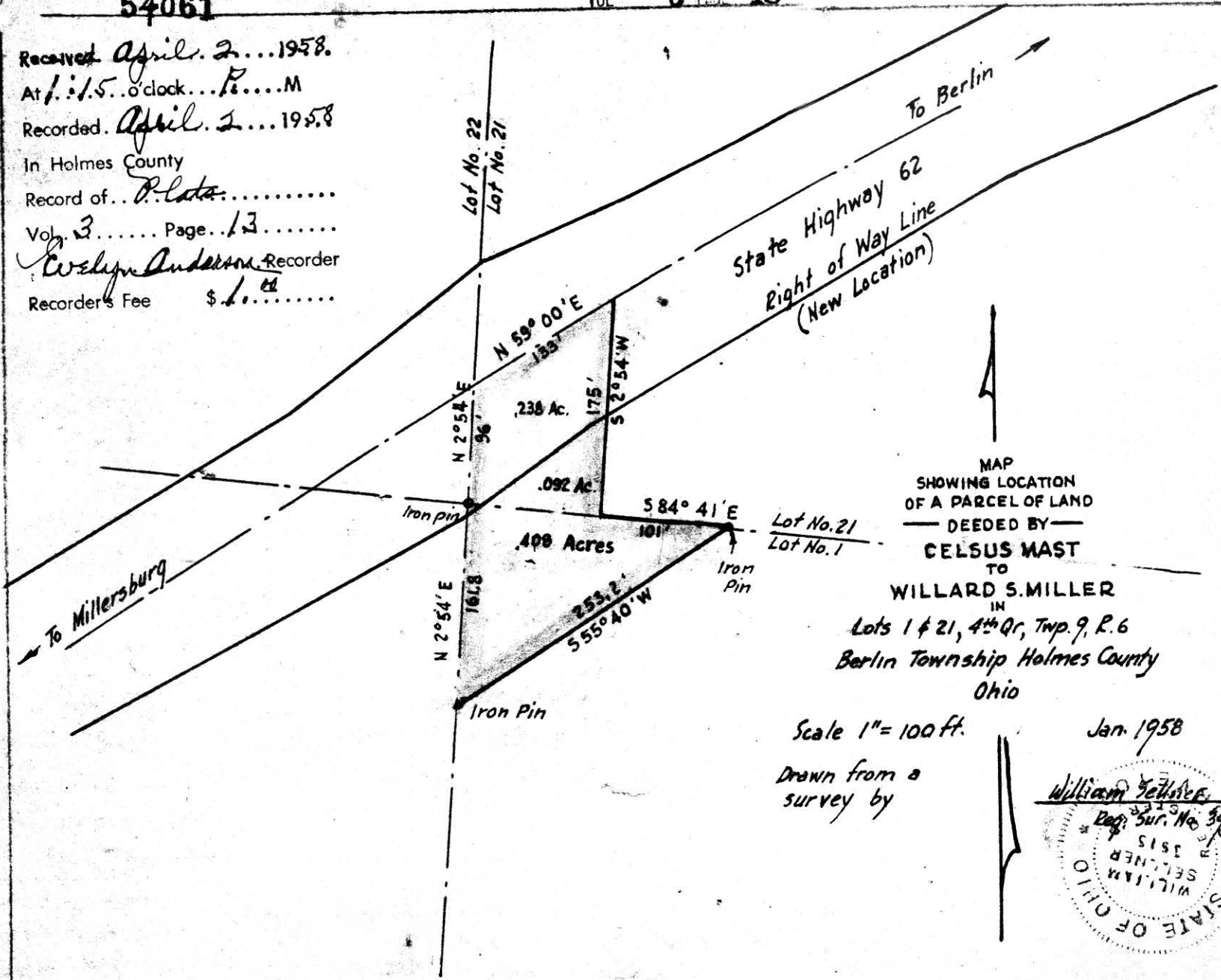


54061

VOL 3 PAGE 13

Received April 2... 1958.  
 At 1:15 o'clock... P.M.  
 Recorded April 2... 1958  
 In Holmes County  
 Record of... *P. Lata*.....  
 Vol. 3..... Page 13.....  
*Wesley Anderson* Recorder  
 Recorder's Fee \$1.00.....



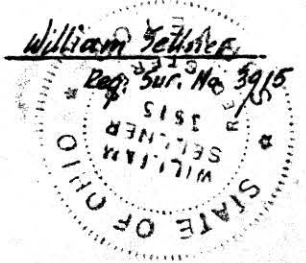
MAP  
 SHOWING LOCATION  
 OF A PARCEL OF LAND  
 DEEDED BY  
 CELSUS MAST

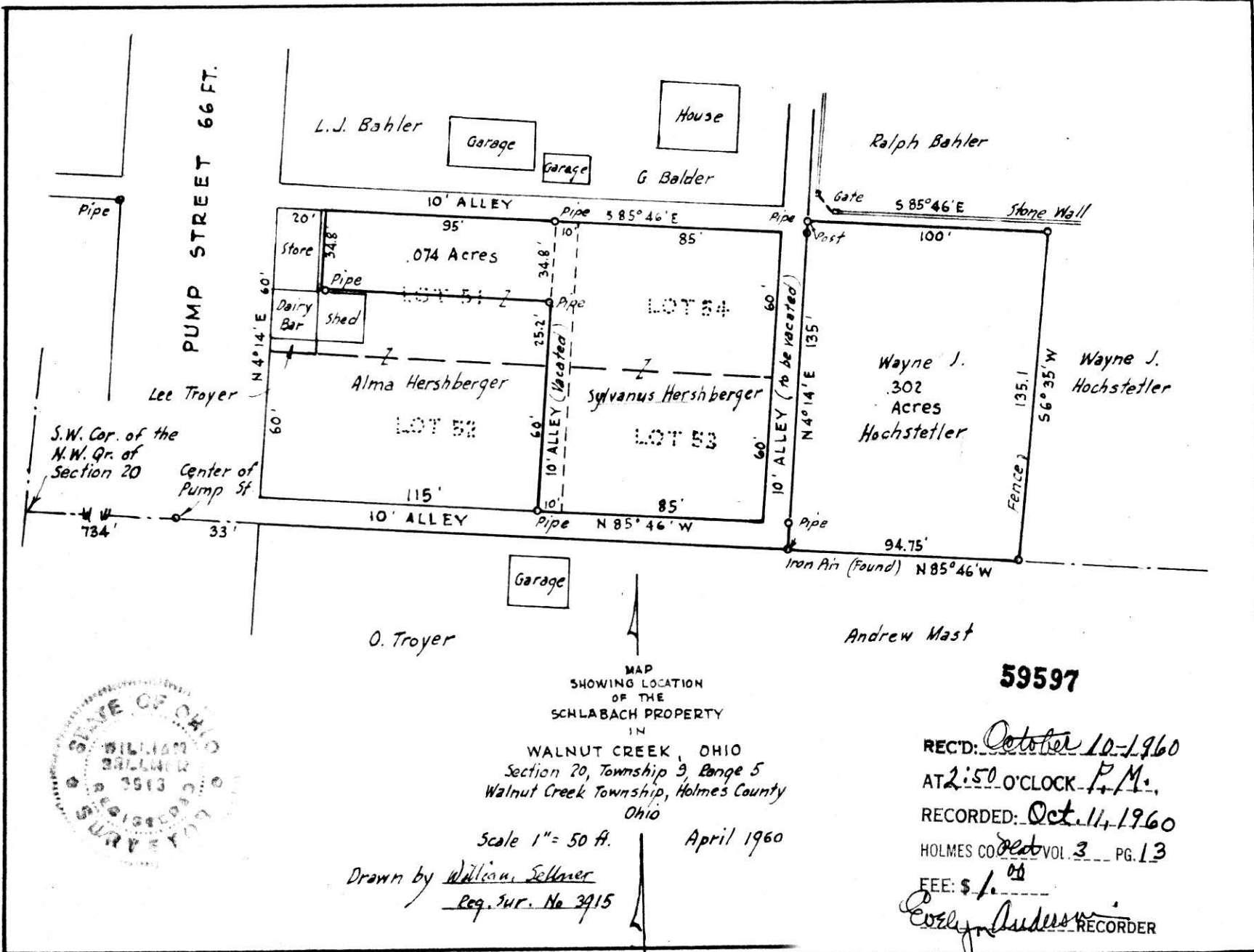
TO  
 WILLARD S. MILLER  
 IN  
 Lots 1 & 21, 4<sup>th</sup> Qr, Twp. 9, R. 6  
 Berlin Township Holmes County  
 Ohio

Scale 1" = 100 ft.

Drawn from a  
 survey by

Jan. 1958





MAP  
SHOWING LOCATION  
OF THE  
SCHLABACH PROPERTY  
IN

WALNUT CREEK, OHIO  
Section 20, Township 9, Range 5  
Walnut Creek Township, Holmes County  
Ohio

Scale 1" = 50 ft.

April 1960

Drawn by William Sellner  
Reg. Sur. No 3915

59597

REC'D: October 10-1960  
AT 2:50 O'CLOCK P.M.,  
RECORDED: Oct. 11, 1960  
HOLMES CO. Vol. 3 PG. 13  
FEE: \$ 1.00  
Cozy Anderson RECORDER

54060

Received April 2... 1958

At 11.5. o'clock P.M.

Recorded April 2... 1958

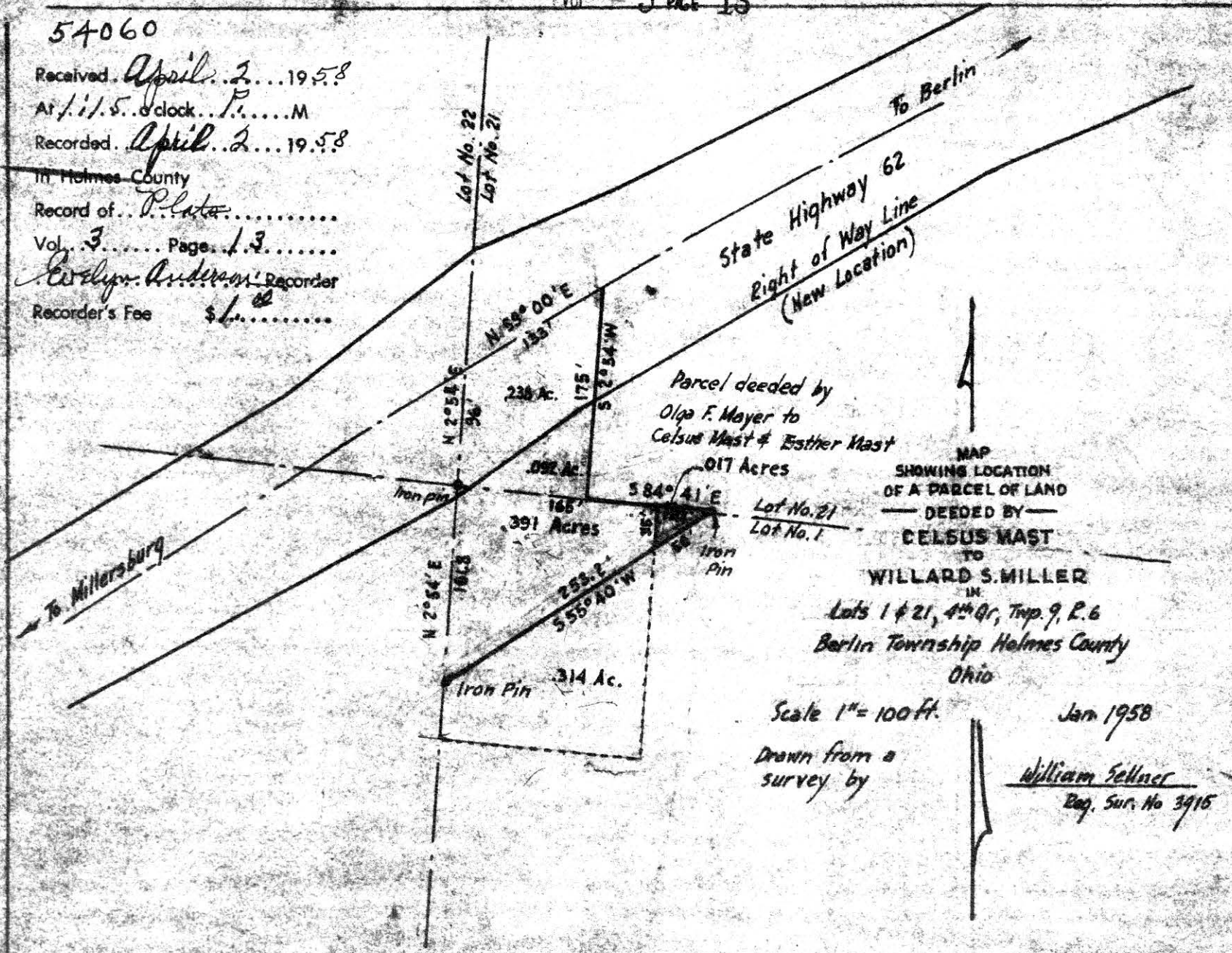
In Holmes County

Record of... Plate.....

Vol. 3 Page 13

Evelyn Anderson Recorder

Recorder's Fee \$1.00



Parcel deeded by Olga F. Mayer to Celsus Mast & Esther Mast

017 Acres

MAP SHOWING LOCATION OF A PARCEL OF LAND DEEDED BY

CELSEUS MAST

TO WILLARD S. MILLER

IN Lots 1 & 21, 4th Qr, Twp. 9, R. 6 Berlin Township Holmes County Ohio

Scale 1" = 100 ft.

Jan 1958

Drawn from a survey by

William Sellner Reg. Sur. No 3915