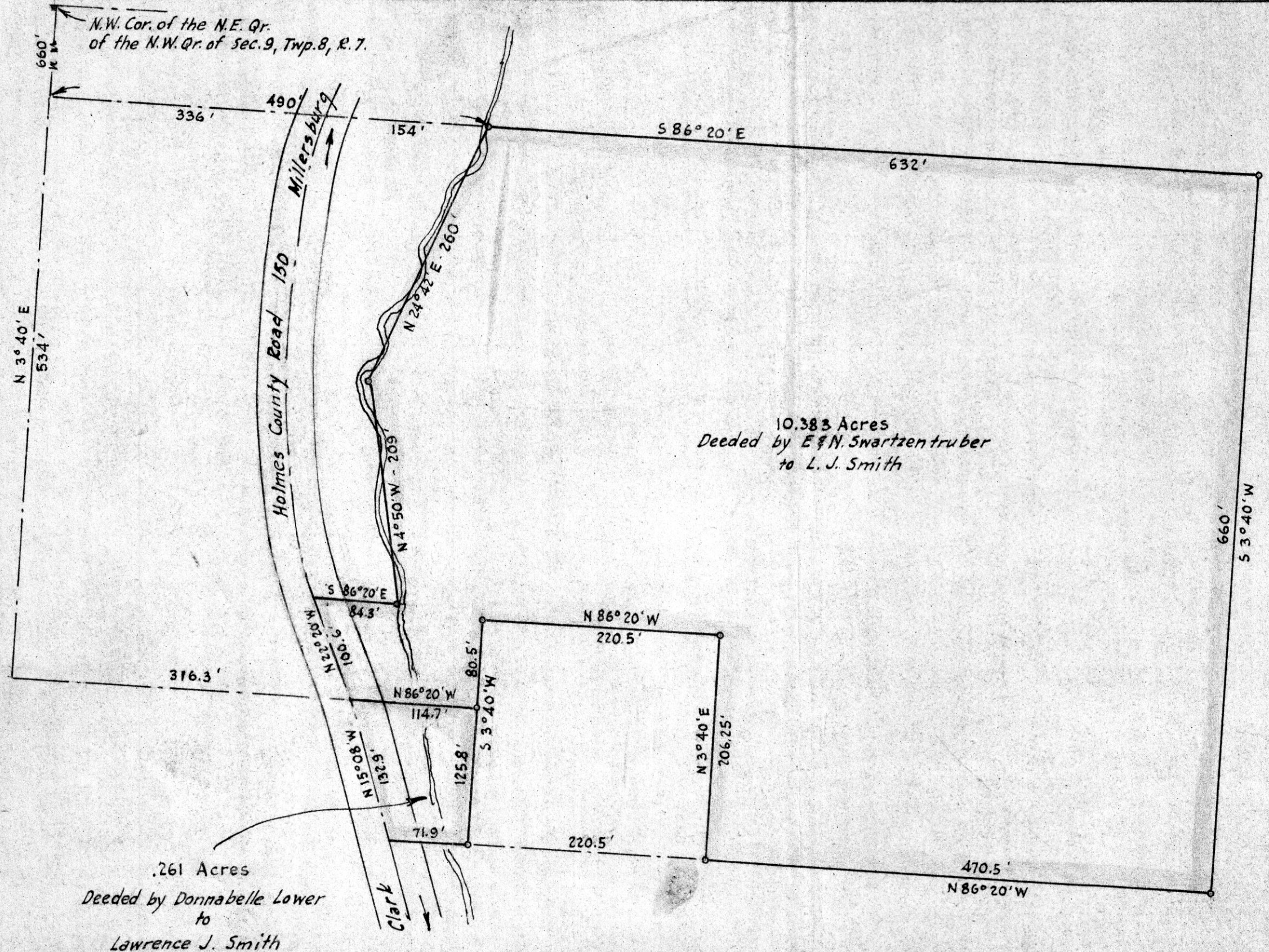


53873

Received *March 8th* 1958
At *11:25* o'clock *A.M.*
Recorded *March 8th* 1958
In Holmes County
Record of... *Plata*.....
Vol. *3*..... Page *9*.....
 Evelyn Anderson Recorder
Recorder's Fee \$ *1.60*....



10.383 Acres
Deeded by E & N. Swartentruber
to L. J. Smith

.261 Acres
Deeded by Donnabelle Lower
to
Lawrence J. Smith



MAP
SHOWING LOCATION
OF A PARCELS OF LAND
DEEDED TO
LAWRENCE J. SMITH
BY
ENOS & NELLIE SWARTENTRUBER
AND BY
DONNABELLE LOWER
Section 9, Township 8, Range 7,
Mechanic Township, Holmes County
Ohio

Scale 1" = 100 ft. Feb. 1958
Drawn from
a survey by
William Selmer
Reg. Sur. No. 3915

