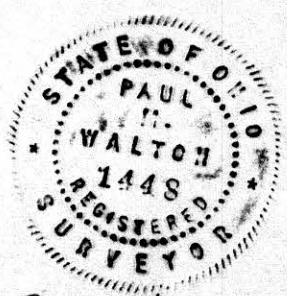
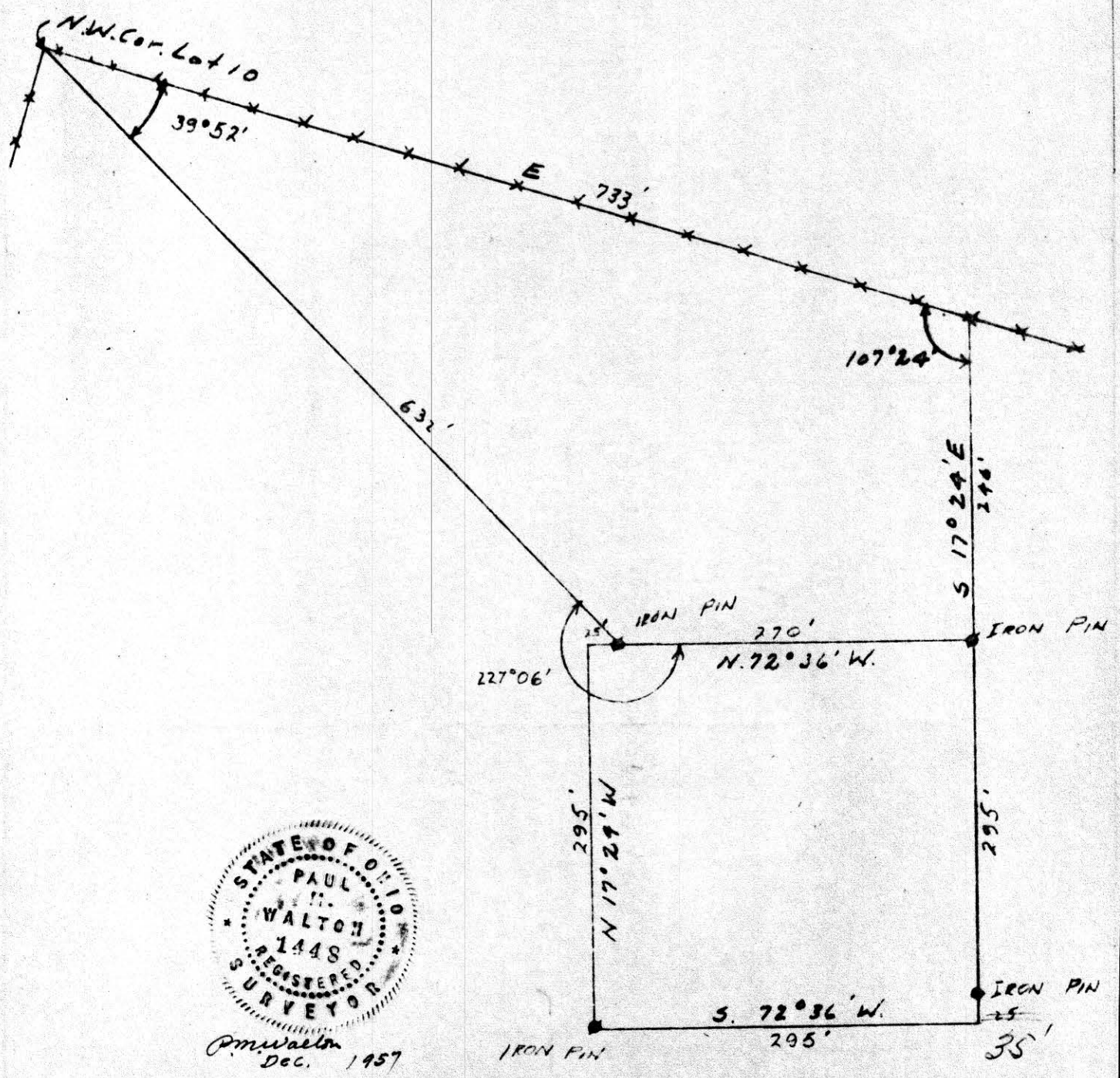


Received March 6th, 1958, At 2:00 o'clock P. M.
 Recorded March 6th, 1958, In Holmes County
 Record of Plato Vol. 3, Page 8
Evelyn Anderson RECORDER Recorder's Fee \$1.15



P. M. Walton
Dec. 1957

53901

Received March 17th 1958

At 2:10 o'clock P.M.

Recorded March 17 1958

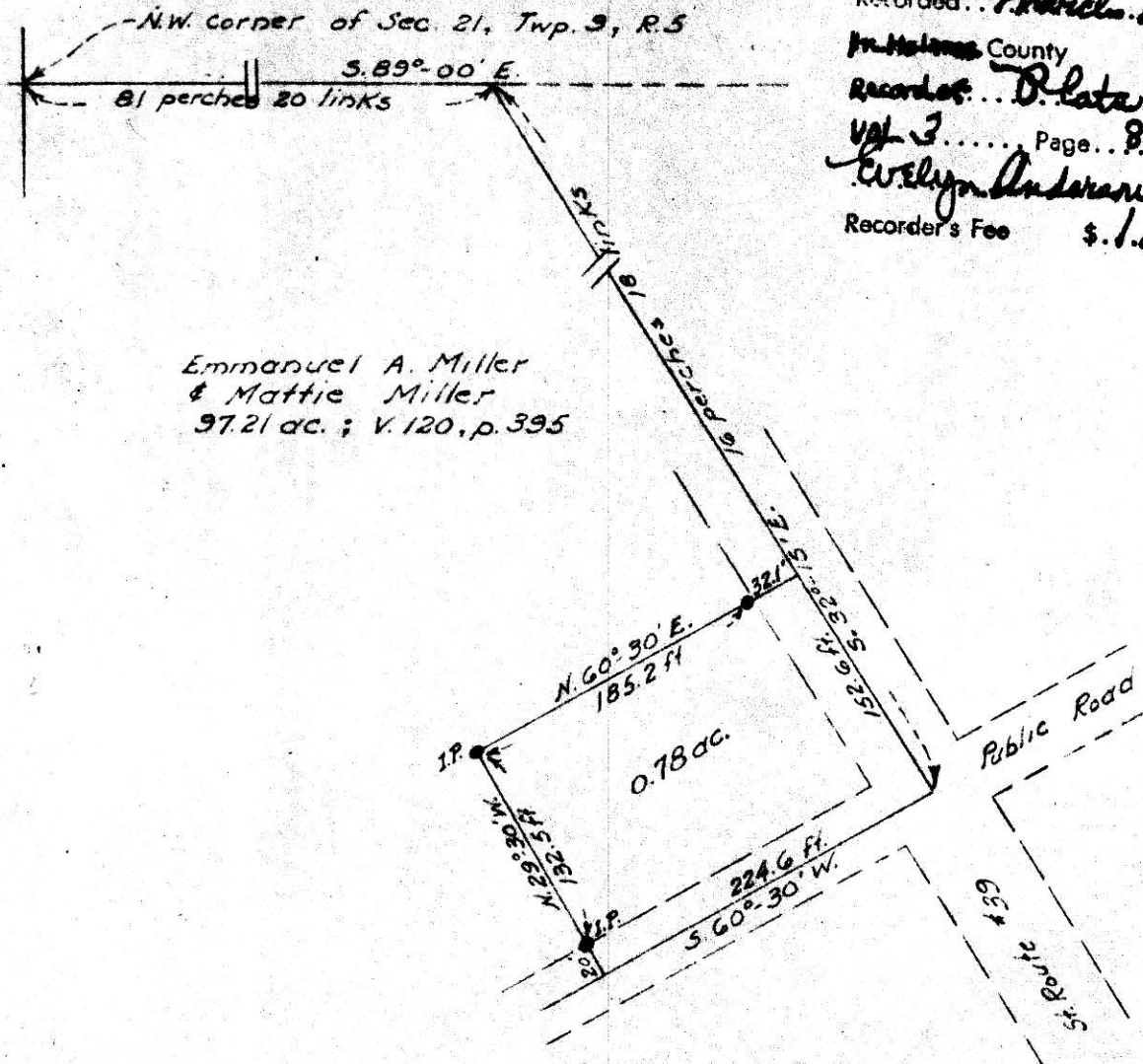
In Holmes County

Recorded D. Late

Vol 3 Page 8

C. S. Anderson Recorder

Recorder's Fee \$1.00



Emmanuel A. Miller & Mattie Miller
97.21 ac.; V. 120, p. 395

PLAT OF A 0.78 ACRE TRACT TO BE CONVEYED
FROM
EMMANUEL A. MILLER & MATTIE MILLER
TO
JOSEPH YODER

Situated in the Township of Walnut Creek, County of Holmes

Scale 1"=100'

Mar. 15, '58