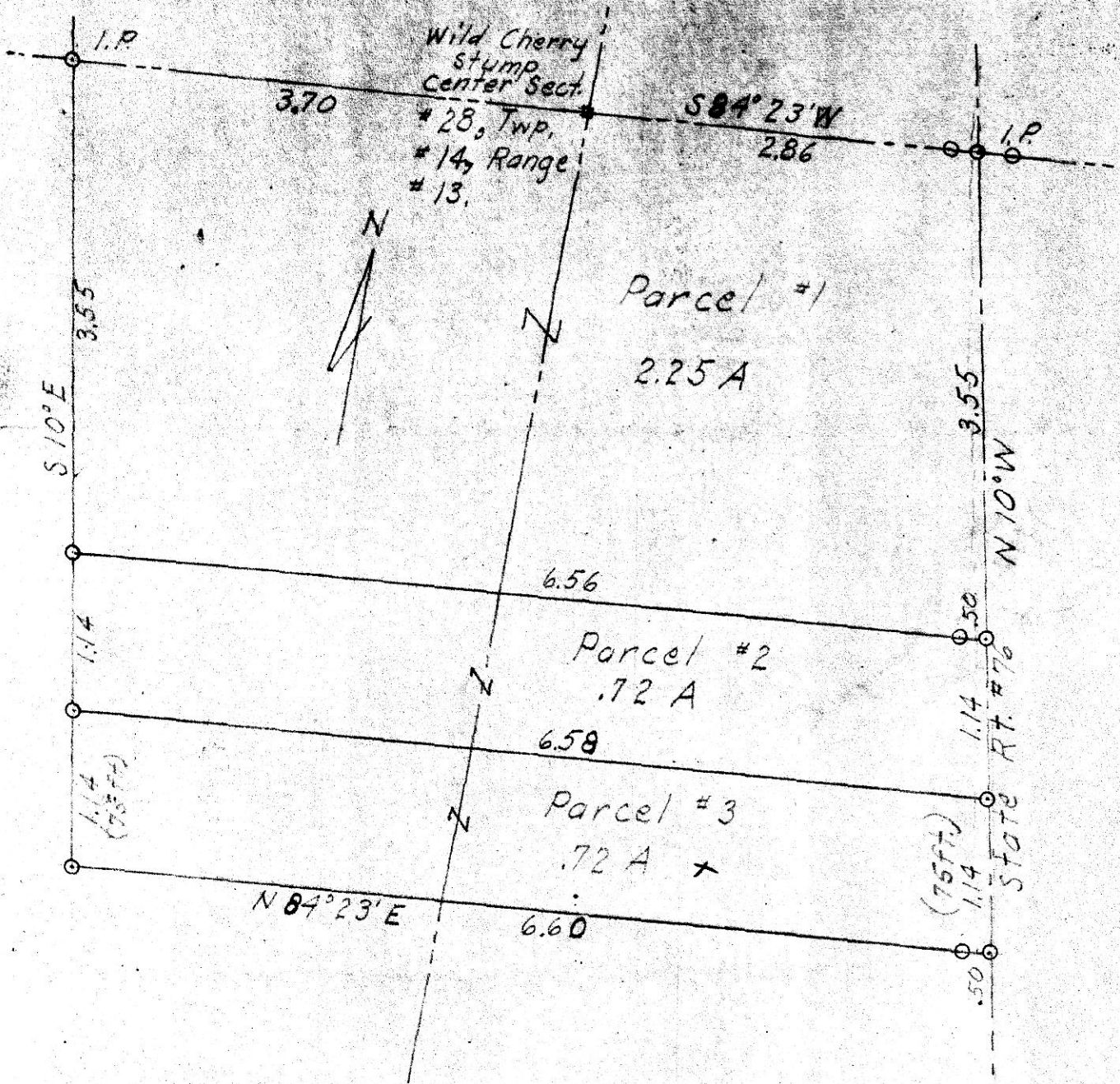


MAP IS DIM BECAUSE IT WAS DRAWN IN LEAD PENCIL.



I certify this plat to be correct to the best of my knowledge and belief.

Prairie Twp.  
Holmes County, Ohio  
Scale: 1" = 1 chain

William A. Poulson  
Reg. Surveyor #3297  
State of Ohio

Received February 26 1956 at 9:55 o'clock A. M.  
 Recorded February 26 1956 in Holmes County  
 Record of Plats Vol. 3 Page 7  
Evelyn Anderson RECORDER Recorder's Fee \$ 1.00