

53585

Received January 11th, 1958

At 11:35 o'clock A. M.

Recorded January 11, 1958

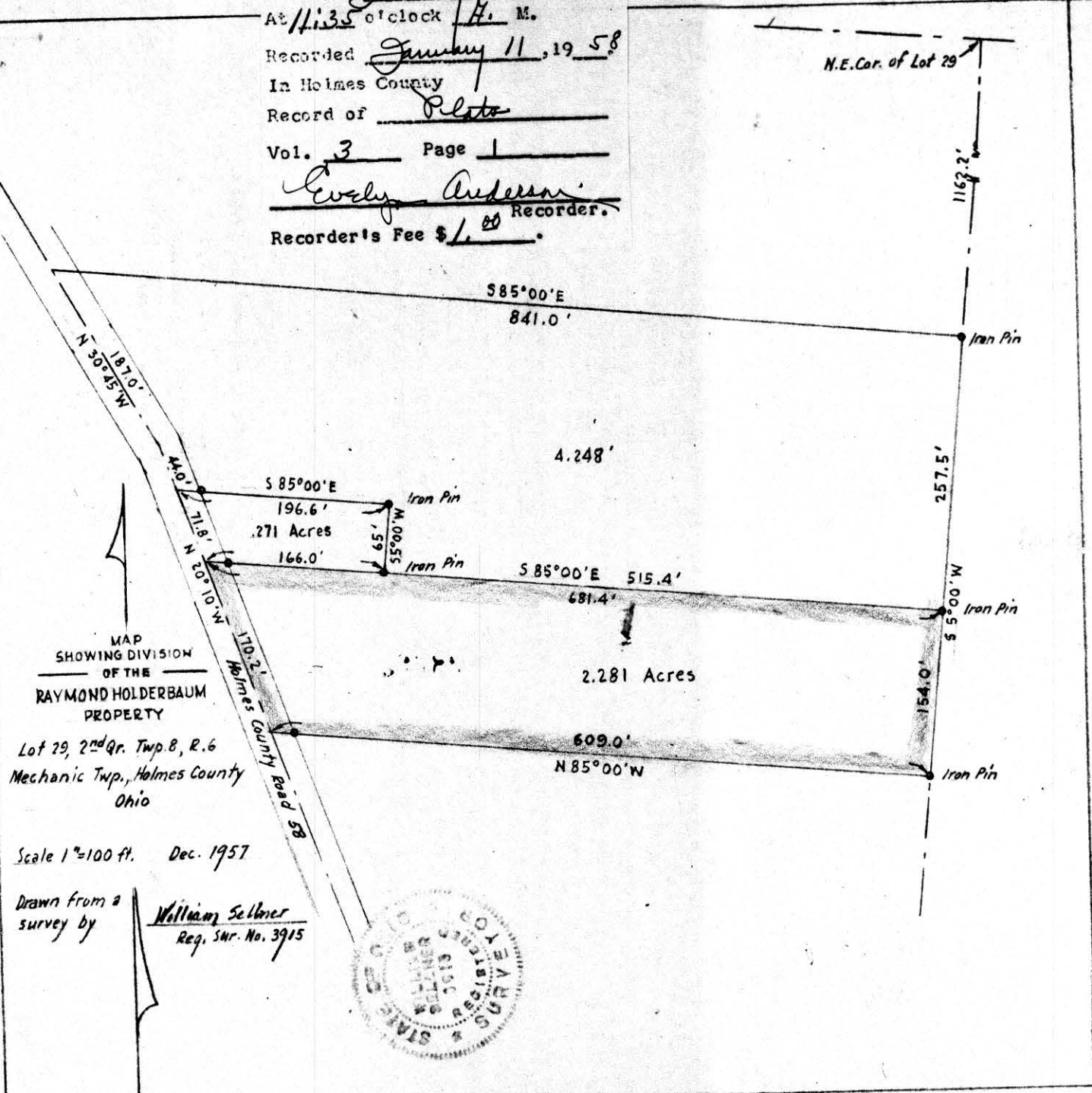
In Holmes County

Record of Plats

Vol. 3 Page 1

Evelyn Anderson
Recorder.

Recorder's Fee \$1.00

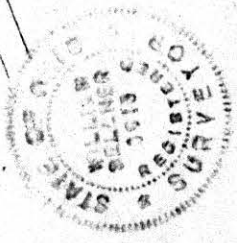


MAP
SHOWING DIVISION
OF THE
RAYMOND HOLDERBAUM
PROPERTY

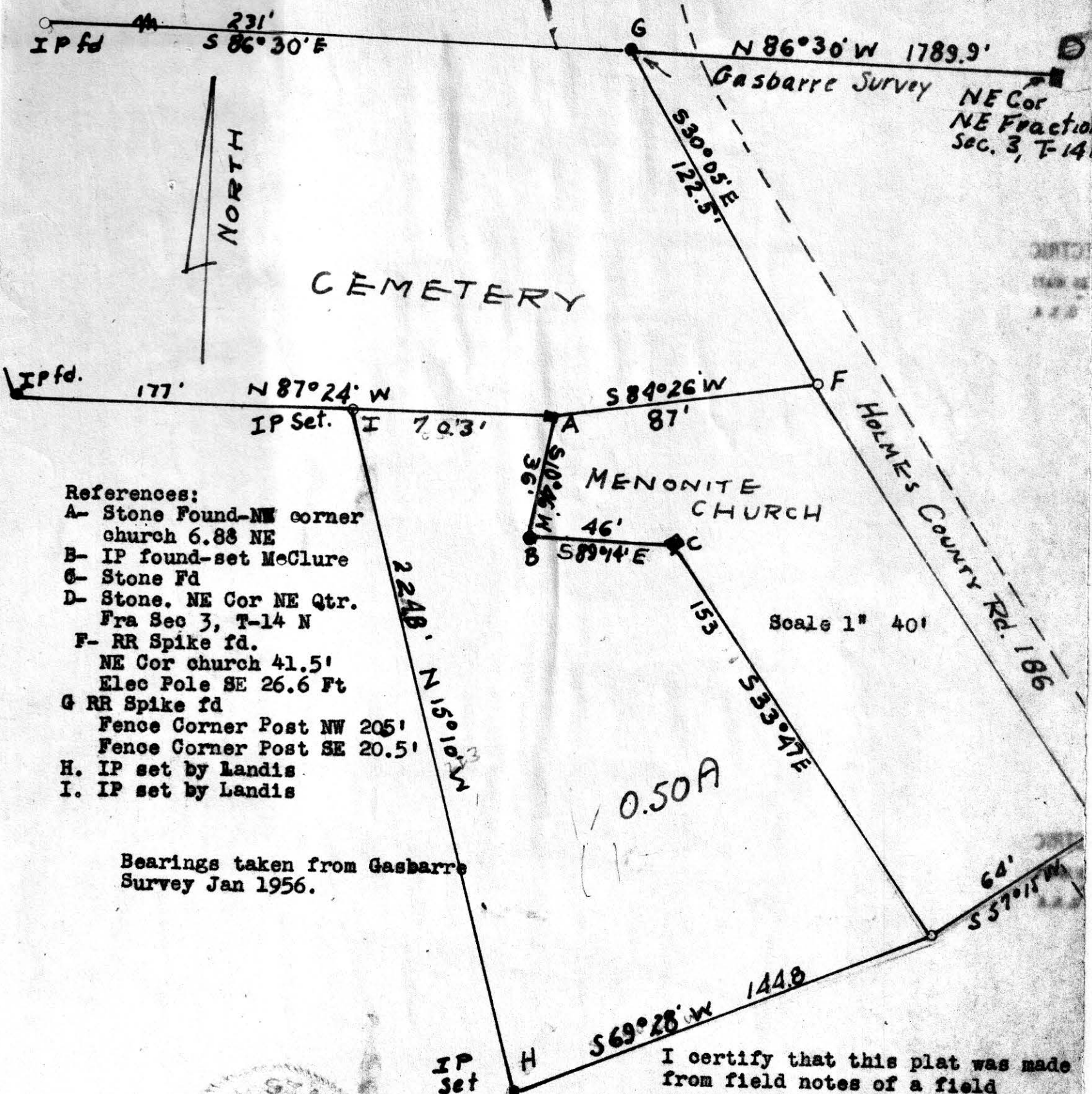
Lot 29, 2nd Qr. Twp. 8, R. 6
Mechanic Twp., Holmes County
Ohio

Scale 1" = 100 ft. Dec. 1957

Drawn from a
survey by William Sellner
Reg. Sur. No. 3915

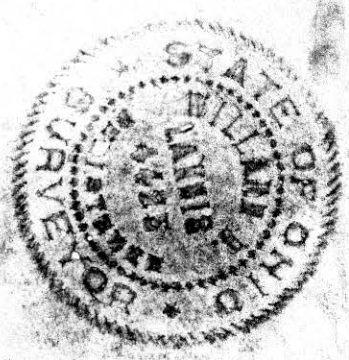


PAINT TOWNSHIP HOLMES COUNTY
 Fractional Section 3 NE Quarter, Paint Township, Holmes County
 Pt NE 1/4, Sec 3, T-14 N



- References:
- A- Stone Found-NE corner church 6.88 NE
 - B- IP found-set McClure
 - G- Stone Fd
 - D- Stone. NE Cor NE Qtr. Fra Sec 3, T-14 N
 - F- RR Spike fd. NE Cor church 41.5' Elec Pole SE 26.6 Ft
 - G RR Spike fd Fence Corner Post NW 205' Fence Corner Post SE 20.5'
 - H. IP set by Landis
 - I. IP set by Landis

Bearings taken from Gasbarre Survey Jan 1956.



I certify that this plat was made from field notes of a field survey made Dec. 20, and Jan 6, 1958 to divide land of Cornelius Lowe in Frac Sec. 3, T-14 N, Holmes County.

Signed: Willard Landis
 Willard Landis, Reg Sur. 4425

53609

Received January 17, 1958
 At 4:10 of clock P. M.
 Recorded January 17, 1958
 In Holmes County
 Record of Plats
 Vol. 3 Page 1
C. Evelyn Anderson
 Recorder.
 Recorder's Fee \$ 1.10