

**Washington Township
N.E. & N.W. Qtr. Section 17
S.E. & S.W. Qtr. Section 17
Knox Township
N.W. Qtr. Sec. 20
N.E. Qtr. Sec. 20
N.W. Qtr. Sec. 21
T-19 N; R-15 W
Holmes County, Ohio**
SURVEYED FOR: Doug Gerber

MASTER PLAT The purpose of this survey.

- Action 1)** Convey 46.123 acres and 109.035 acres.
- Action 2)** Convey 20.761 acres.
- Action 3)** Convey 36.977 acres.
- Action 4)** Convey 13.361 acres.
- Action 5)** Convey 10.627 acres.
- Action 6)** Convey 16.427 acres.

REFERENCES:

- Deeds as shown
- Plat Vol. 02 Page 559
 - Plat Vol. 18 Page 93
 - Plat Vol. 05 Page 163
 - Plat Vol. 19 Page 3383
 - Plat Vol. 13 Page 85
 - Plat Vol. 12 Page 703
 - Plat Vol. 19 Page 1126
 - Plat Vol. 19 Page 1838
 - Plat Vol. 19 Page 1307
 - Plat Vol. 18 Page 612
 - Plat Vol. 19 Page 1075
 - Plat Vol. 14 Page 434
 - Plat Vol. 05 Page 141
 - Plat Vol. 02 Page 55
 - Plat Vol. 19 Page 1265
 - Plat Vol. 19 Page 1436
 - Plat Vol. 09 Page 195
 - Plat Vol. 09 Page 194

Basis of Bearing from Grid North, Ohio State Plane Coordinate System, North Zone, NAD 83 (2011).

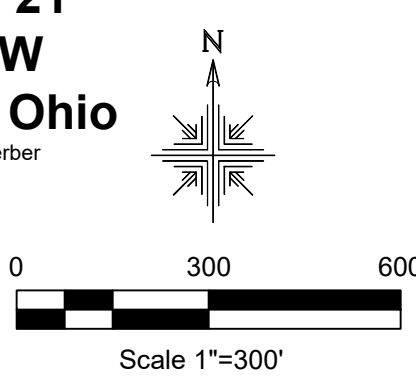
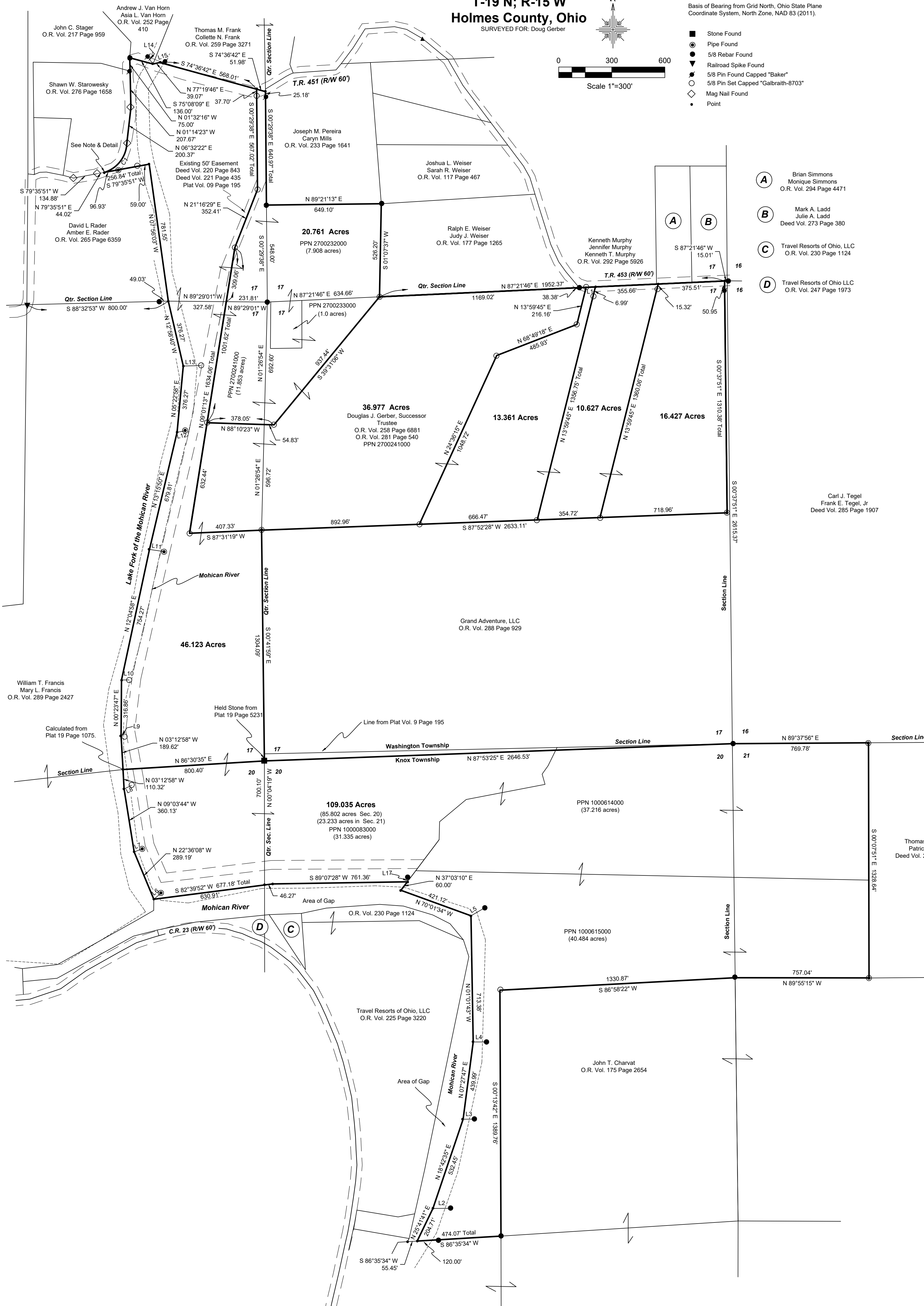
- Stone Found
- Pipe Found
- 5/8 Rebar Found
- Railroad Spike Found
- 5/8 Pin Found Capped "Baker"
- 5/8 Pin Set Capped "Galbraith-8703"
- Mag Nail Found
- Point

20260001766

B: 2 P: 676

FILED FOR RECORD IN
HOLMES COUNTY, OH
ANITA HALL, COUNTY RECORDER
04/22/2026 12:41 PM
PLAT LARGE 86.40
PAGES: 1

ORV 295 Pg 5395
ORV 295 Pg 5402
ORV 295 Pg 5406
ORV 295 Pg 5410
ORV 295 Pg 5414
ORV 295 Pg 5417



- (A) Brian Simmons
Monique Simmons
O.R. Vol. 294 Page 4471
- (B) Mark A. Ladd
Julie A. Ladd
Deed Vol. 273 Page 380
- (C) Travel Resorts of Ohio, LLC
O.R. Vol. 230 Page 1124
- (D) Travel Resorts of Ohio LLC
O.R. Vol. 247 Page 1973

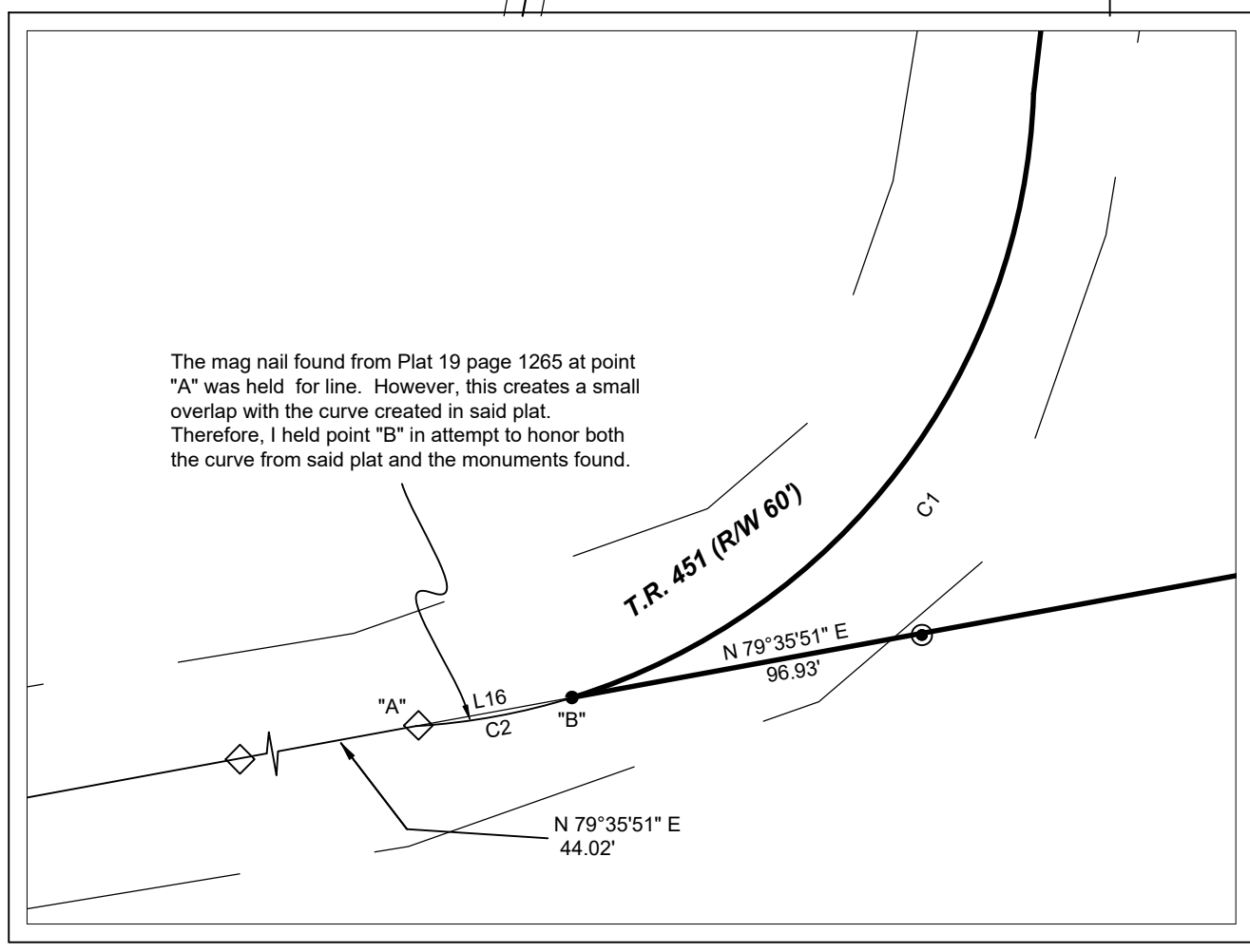
Carl J. Tegel
Frank E. Tegel, Jr.
Deed Vol. 285 Page 1907

Thomas A. Corbo
Patricia Corbo
Deed Vol. 245 Page 306



CERTIFICATE OF ACCURACY
I certify this survey to be correct to the best of my knowledge.
Caleb Galbraith
Caleb Jerome Galbraith P.S. 8703
Date: March 1, 2024, revised Jan. 19, 2026
Job ID: 1526

Pioneer Surveying & Services, LLC
5434 Township Road 377
Millersburg, Ohio 44654
Phone: 330-231-0497
Email: caleb@pioneersurveyingandservices.com



LINE	BEARING	DISTANCE
L1	N 87° 21' 46" E	52.18'
L2	N 89° 42' 29" E	99.95'
L3	N 89° 41' 12" E	64.90'
L4	S 89° 58' 18" E	76.01'
L5	N 59° 57' 20" E	89.85'
L6	N 53° 40' 14" E	49.78'
L7	N 68° 35' 38" E	47.03'
L8	N 54° 33' 43" E	46.00'
L9	N 85° 05' 42" W	7.29'
L10	S 89° 55' 11" E	42.49'
L11	S 81° 45' 40" E	84.29'
L12	N 79° 14' 52" E	44.19'
L13	N 88° 25' 58" E	98.45'
L14	N 36° 12' 25" W	51.52'
L15	N 72° 32' 17" E	25.83'
L16	N 79° 35' 52" E	44.02'
L17	N 02° 59' 43" E	12.00'

CURVE	RADIUS	ARC LENGTH	CHORD LENGTH	CHORD BEARING	DELTA ANGLE
C1	180.00'	221.63'	207.89'	N 37° 18' 13" E	77° 03' 25"
C2	180.00'	44.13'	44.02'	S 79° 35' 52" W	14° 02' 47"

APPROVED FOR TRANSFER ONLY
NO SUBDIVISION PLAT REQUIRED
(O.R.C. 711.003 & 711.131)
lot(s) not for building unless
approved by Board of Health
HCP
HOLMES CO. PLANNING COMMISSION
By: *AO* Date: *4/10/2026*

Plat Approved
Holmes County Map Office
2/17/2026 MM