

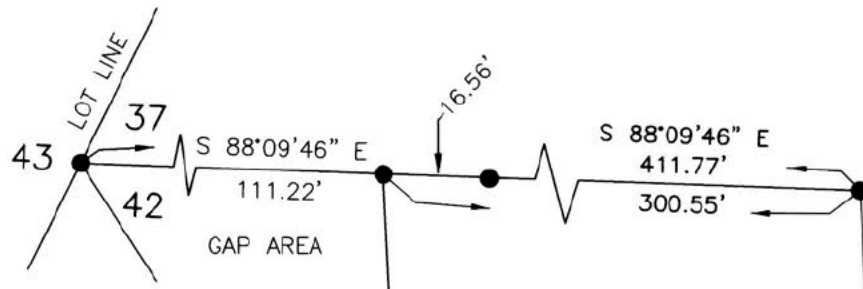
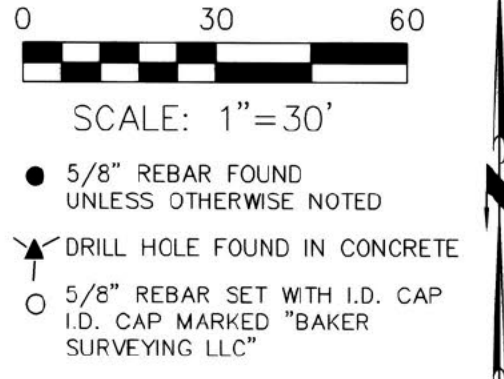
HARDY TOWNSHIP
 1ST. QTR., LOT 42
 T-9 N; R-7 W
 HOLMES COUNTY, OHIO

PREPARED FOR: GRANDVIEW PROPERTY HOLDINGS, LLC
 PREPARED BY: BAKER SURVEYING, LLC

ALL BEARINGS AND DATA ARE TAKEN FROM ORIGINAL
 SURVEY RECORDED IN PLAT VOL. 2 PAGE 635.

ALL CONVEYED LOTS, LIMITED COMMON ELEMENTS AND EASEMENTS SUBJECT TO TERMS
 AND CONDITIONS OF DECLARATION OF COVENANTS, CONDITIONS, RESTRICTIONS, AND
 RESERVATION OF EASEMENTS FOR TRAILS EDGE ESTATES HOMEOWNERS ASSOCIATION,
 INC. AS RECORDED IN OFFICIAL RECORD VOL. 284, PAGE 4361 AS AMENDED.

O/R 285 Pg 4628
 Plat Vol 2 Pg 648



- REFERENCES
- DEED VOL. 242 PAGE 928
 - DEED VOL. 260 PAGE 405
 - O.R. VOL. 169 PAGE 831
 - O.R. VOL. 202 PAGE 3247
 - O.R. VOL. 204 PAGE 3453
 - O.R. VOL. 206 PAGE 2378
 - O.R. VOL. 208 PAGE 2214
 - O.R. VOL. 208 PAGE 2217
 - O.R. VOL. 210 PAGE 1386
 - O.R. VOL. 210 PAGE 1389
 - O.R. VOL. 223 PAGE 634
 - O.R. VOL. 229 PAGE 2630
 - O.R. VOL. 263 PAGE 2877
 - O.R. VOL. 276 PAGE 5716
 - O.R. VOL. 277 PAGE 1886
 - O.R. VOL. 277 PAGE 7281
 - O.R. VOL. 284 PAGE 4361
 - PLAT VOL. 1 PAGE 357-362
 - PLAT VOL. 2 PAGE 459
 - PLAT VOL. 2 PAGE 493
 - PLAT VOL. 7 PAGE 357
 - PLAT VOL. 14 PAGE 3
 - PLAT VOL. 14 PAGE 4
 - PLAT VOL. 19 PAGE 1179
 - PLAT VOL. 19 PAGE 3802
 - PLAT VOL. 2 PAGE 635
 - PLAT VOL. 2 PAGE 644 & 645

BASIS OF BEARINGS FROM OHIO STATE PLANE
 COORDINATE SYSTEM, NORTH ZONE, N.A.D. 83,
 2011 ADJUSTMENT

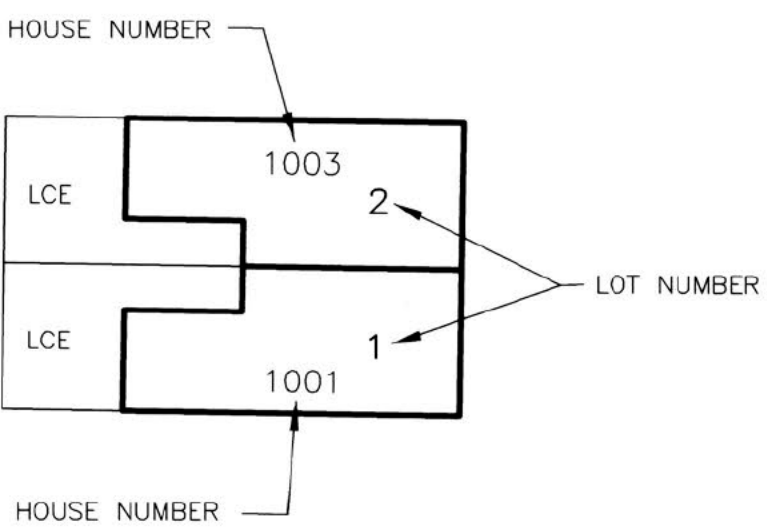
PARCEL 20.624 AC.
 -PHASE 1 0.985 AC.
 -PHASE 2 1.416 AC.
 RESIDUE 18.223 AC.

LOT 950
 18.223 AC.

LOT 42 - 18.205 AC.
 LOT 47 - 0.018 AC.

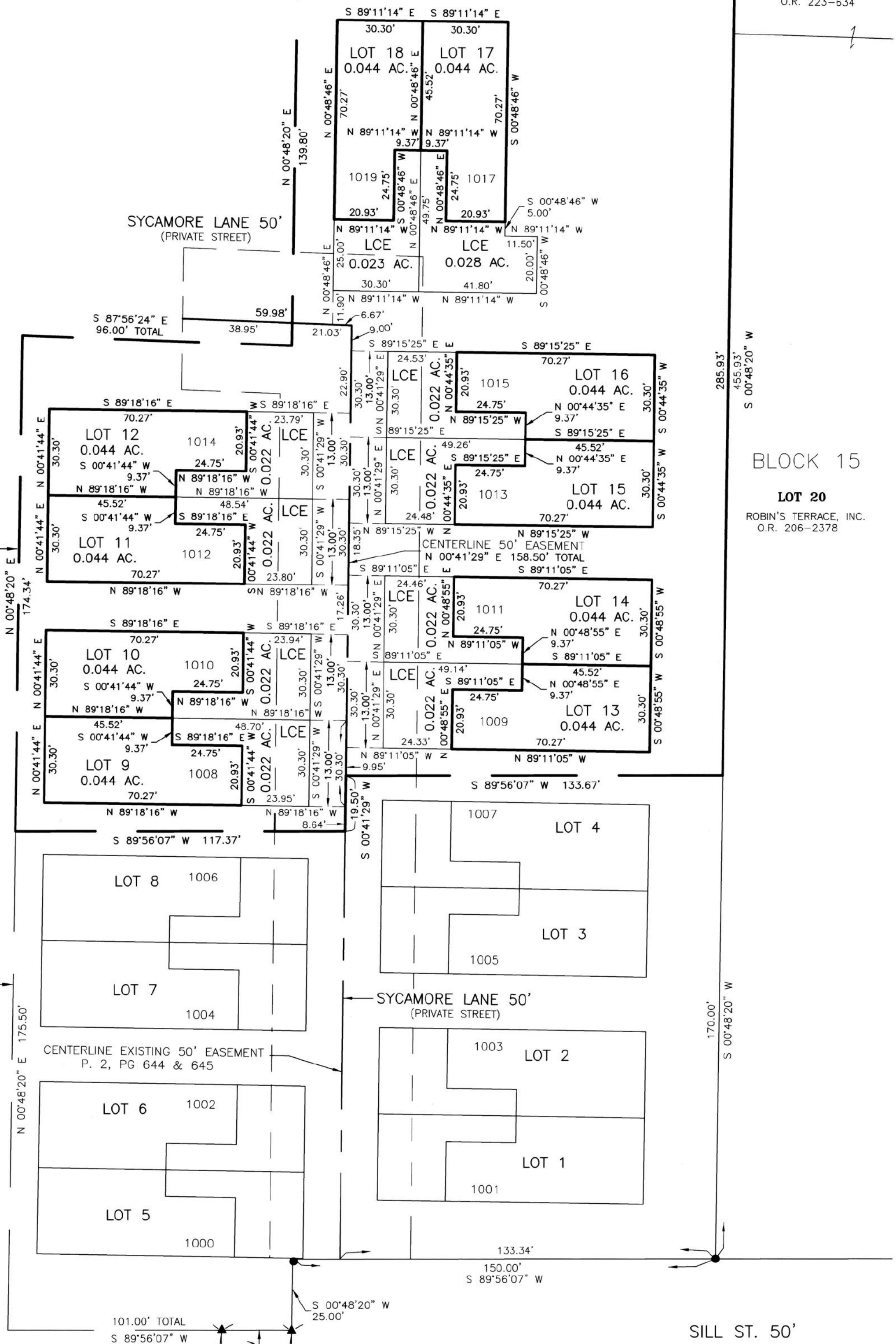
GRANDVIEW PROPERTY
 HOLDINGS, LLC
 O.R. 285-2414
 PN 0701668017

LCE = LIMITED COMMON ELEMENTS



PHASE TWO
 1.416 AC.

PHASE ONE
 0.985 AC.
 P. 2-644
 PN 0701668016



I CERTIFY THAT THE BUILDINGS ARE LOCATED
 ON THE TRACT OF LAND AS INDICATED AND
 THE BUILDINGS ARE CONSTRUCTED AS SHOWN
 ON THIS PLAT.

AARON L. GERBER P.S. 8379
 DATE: MAY 11, 2023
 ALG
 FILE NAME: WORK5\S-62A-23\CNK
 SHEET 2 OF 2

TRANSFER NOT NECESSARY
 DATE May 30, 2023
 AUDITOR Judith McKeef

BAKER SURVEYING, LLC
 138 N. CLAY STREET
 MILLERSBURG, OHIO 44654
 PH. 330-674-4788
 EMAIL: bakersurveying@gmail.com