

LMS SURVEYING LTD
 Professional Commercial & Residential Land Surveys
 P.O. Box 65 • Sharon Center • OH • 44274
 330.329.6812 / Surveys@LMSsurveying.com

TOWNSHIP OF HARDY, COUNTY OF HOLMES AND STATE OF OHIO:
 KNOWN AS PART OF THE SOUTHEAST QUARTER OF SECTION 15, TOWNSHIP 9 NORTH AND
 RANGE 6 WEST

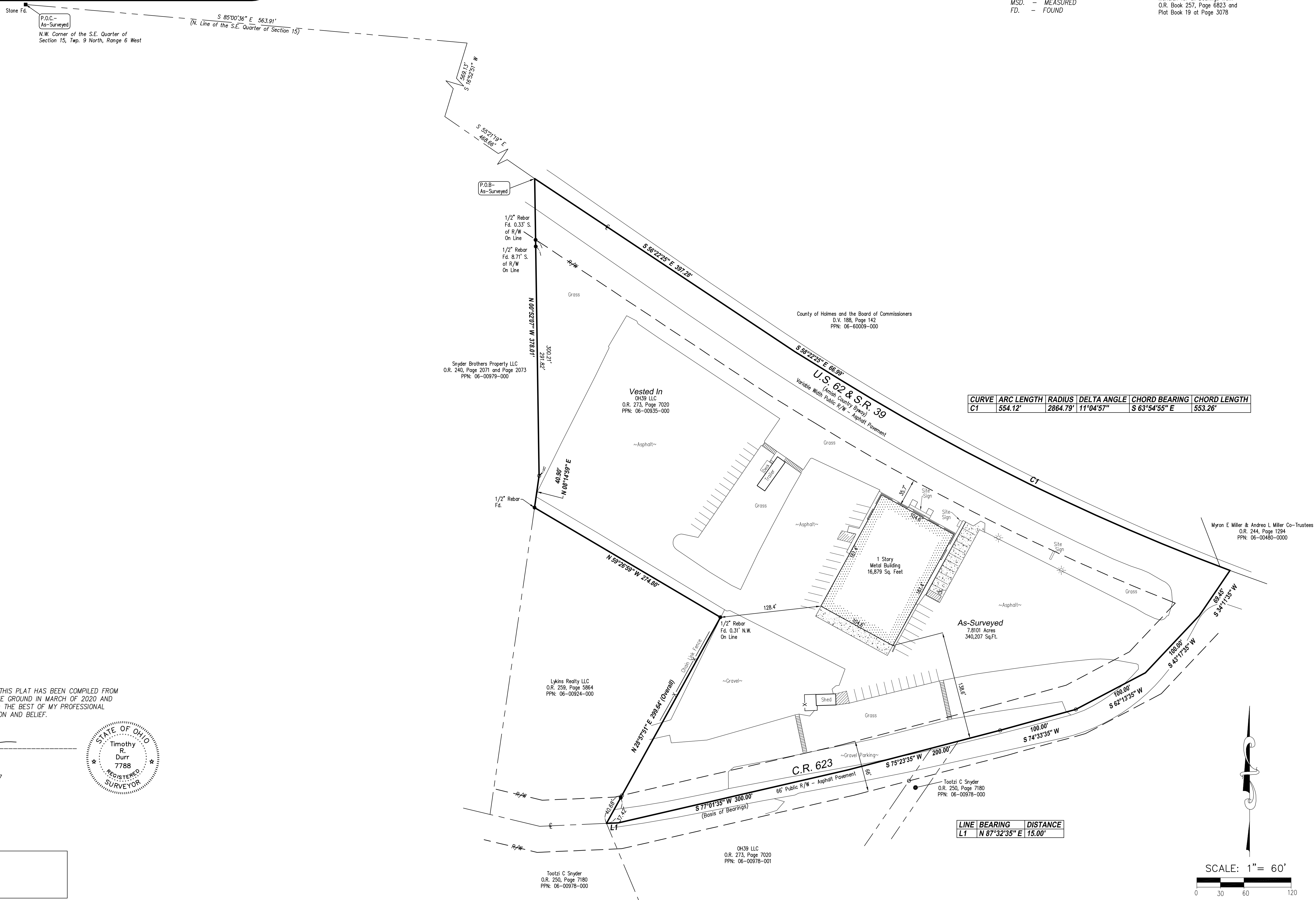
- LEGEND:**
- - MONUMENTATION FOUND
 - - 5/8"x30" LONG IRON REBAR SET W/ CAP "LMS"
 - R/W - RIGHT OF WAY
 - C/L - CENTER LINE
 - REC. - RECORD
 - MSD. - MEASURED
 - FD. - FOUND

- REFERENCES**
- O.R. 257, Page 7384
 - O.R. 257, Page 6823
 - O.R. 258, Page 586
 - P.B. 5, Pg. 87
 - P.B. 6, Page 98
 - P.B. 19, Page 3078
 - Meridian for all Bearings from O.R. Book 257, Page 6823 and Plat Book 19 at Page 3078

For Recorder's Office Use

202100014126
 B: 2 P: 616
 FILED FOR RECORD IN
 HOLMES COUNTY, OH
 ANITA HALL, COUNTY RECORDER
 03/16/2021 09:15 AM
 PLAT LARGE . 86.40
 PAGES: 1
 ORV 2.76 PG 1607

For Planning Commission Use

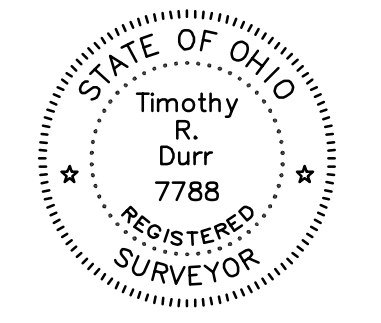


CURVE	ARC LENGTH	RADIUS	DELTA ANGLE	CHORD BEARING	CHORD LENGTH
C1	554.12'	2864.79'	11°04'57"	S 63°54'55\" E	553.26'

LINE	BEARING	DISTANCE
L1	N 87°32'35\" E	15.00'

I HEREBY STATE THAT THIS PLAT HAS BEEN COMPILED FROM A SURVEY MADE ON THE GROUND IN MARCH OF 2020 AND THAT IT IS CORRECT TO THE BEST OF MY PROFESSIONAL KNOWLEDGE, INFORMATION AND BELIEF.

TIMOTHY R. DURR
 RPLS 7788
 IN THE STATE OF OHIO
 PROJECT NO. B-200267



APPROVED FOR TRANSFER ONLY
 NO SUBDIVISION PLAT REQUIRED
 (O.R.C. 711.003 & 711.131)
 (noted not for building unless approved by Board of Health)
 HOLMES CO. PLANNING COMMISSION
 By AO Date 3/16/2021

For Map Office Use

Plat Approved
 Holmes County Map Office
 3/15/2021 TD

