

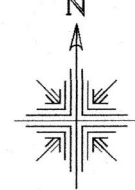
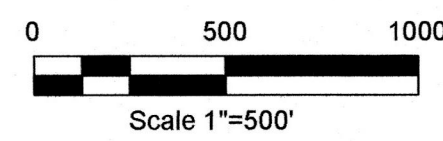
Knox Township  
Section 25  
S.W. & N.W. Qtr.'s Section 24  
S.W. Qtr. Section 17  
S.E. & S.W. Qtr. Section 16  
T-9 N; R-9 W

Richland Township  
N.E. Qtr. Section 5  
T-8 N; R-9 W  
Holmes County, Ohio  
SURVEYED FOR: Stitzlein Family

REFERENCES:

Deeds as shown  
Plat Vol. 3 Page 358  
Plat Vol. 5 Page 81  
Plat Vol. 16 Page 620  
Plat Vol. 18 Page 756  
Plat Vol. 19 Page 3697  
Plat Vol. 19 Page 2424  
Plat Vol. 19 Page 3728  
Plat Vol. 13 Page 1511  
Plat Vol. 16 Page 867  
Plat Vol. 19 Page 67  
Plat Vol. 19 Page 1120  
Plat Vol. 15 Page 104  
Plat Vol. 19 Page 67  
Plat Vol. 19 Page 2025  
Plat Vol. 9 Page 220  
Plat Vol. 19 Page 115  
unrecorded survey by Jamie Darr established from survey by Jamie Darr July 11, 2008 dated July 11, 2008  
unrecorded survey by Aaron L. Gerber dated June 27, 2014  
S.R. 5 page 166

Basis of Bearing Grid North, Ohio State Plane Coordinate System, North Zone, NAD 83



- 1" Pipe Found unless otherwise noted
- Stone Found
- 5/8" Rebar Found unless noted
- 3/4" Rod Found
- 1" Rod Found
- 5/8" Capped Pin Found "Baker"
- 5/8" Capped Pin Found "Shamp"
- 5/8" Capped Pin Set "Galbraith"
- Railroad Spike Found
- Railroad Spike Set
- Point

MASTER PLAT: The Purpose of this Survey.

Action 1) Convey 170.048 acres.  
Action 2) Convey 851.035 acres and 11.799 acres.

J. Donald Stitzlein, Patricia A. Stitzlein, co-trustees  
O.R. Vol. 233 Page 1706  
PPN 110044000  
(60.737 acres calc.)

J. Donald Stitzlein, Patricia A. Stitzlein, co-trustees  
O.R. Vol. 195 Page 1351  
PPN 110045000  
(31.123 acres calc.)

J. Donald Stitzlein, Patricia A. Stitzlein, co-trustees  
O.R. Vol. 195 Page 1351  
PPN 1100449002  
(1.735 acres calc.)

J. Donald Stitzlein, Patricia A. Stitzlein, co-trustees  
O.R. Vol. 195 Page 1351  
PPN 110045000  
(14.756 acres calc.)

J. Donald Stitzlein, Patricia A. Stitzlein, co-trustees  
O.R. Vol. 195 Page 1351  
PPN 110045000  
(14.696 acres calc.)

J. Donald Stitzlein, Patricia A. Stitzlein, co-trustees  
O.R. Vol. 195 Page 1351  
PPN 110045000  
(29.617 acres calc.)

J. Donald Stitzlein, Patricia A. Stitzlein, co-trustees  
O.R. Vol. 195 Page 1351  
PPN 110045000  
(29.489 acres calc.)

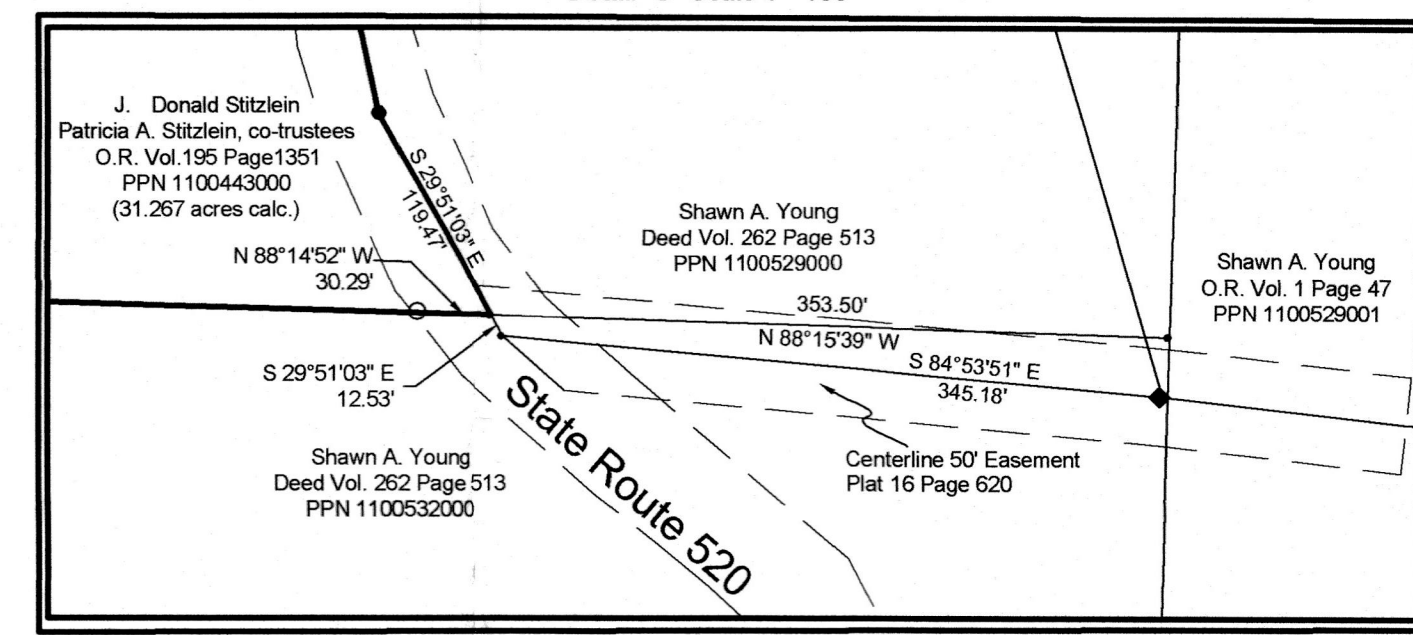
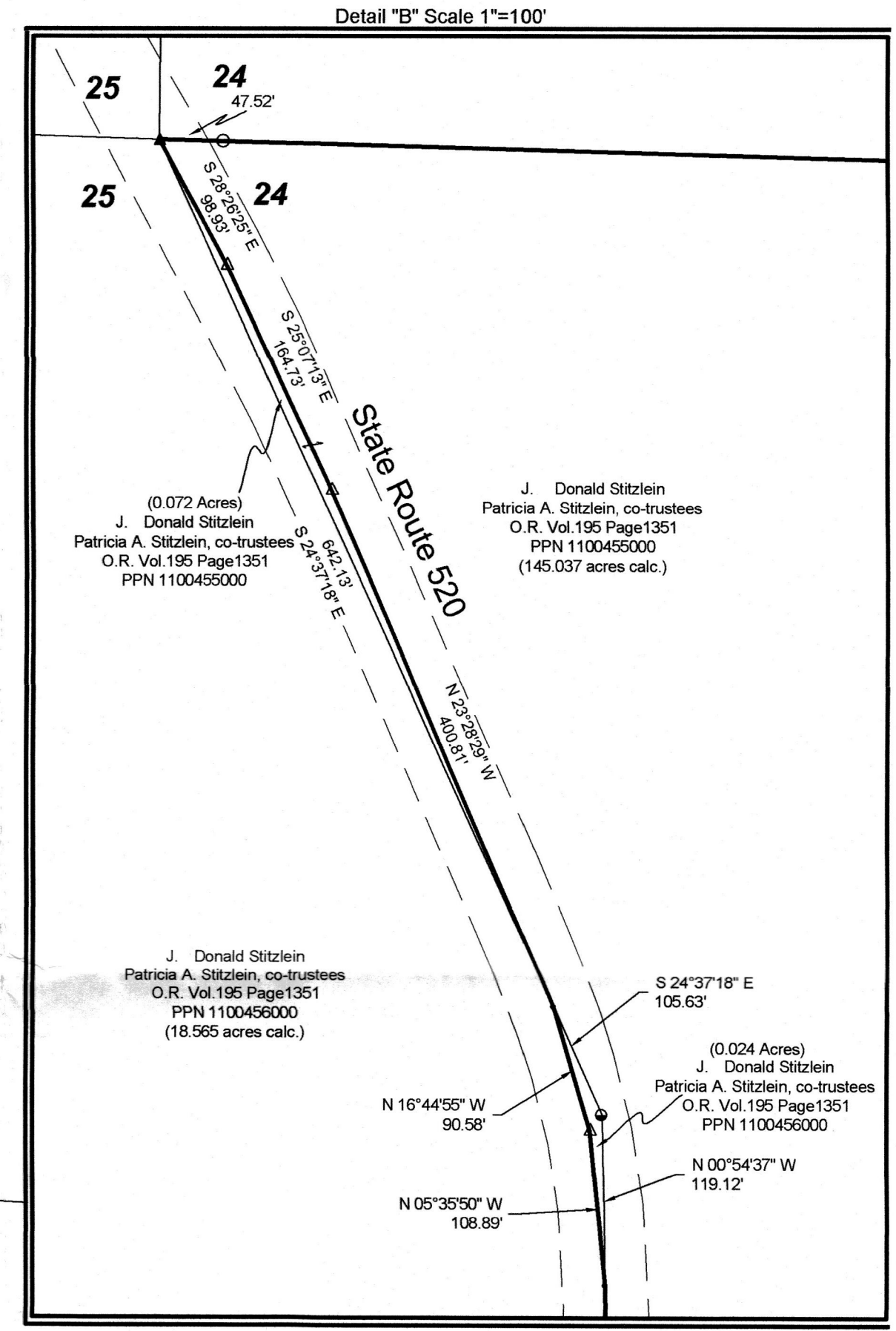
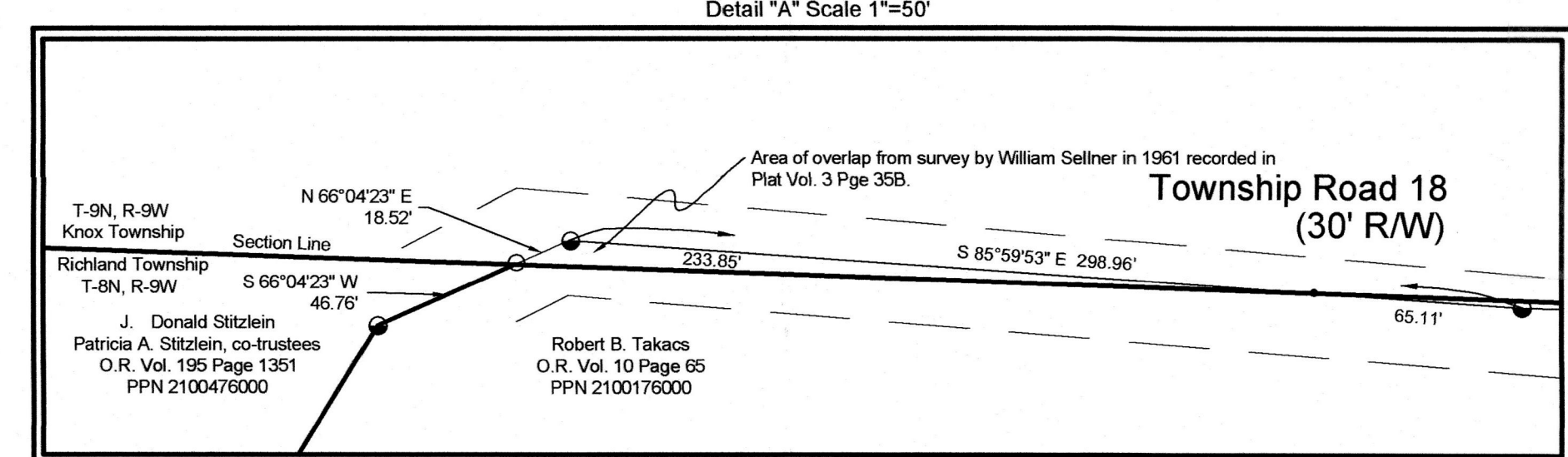
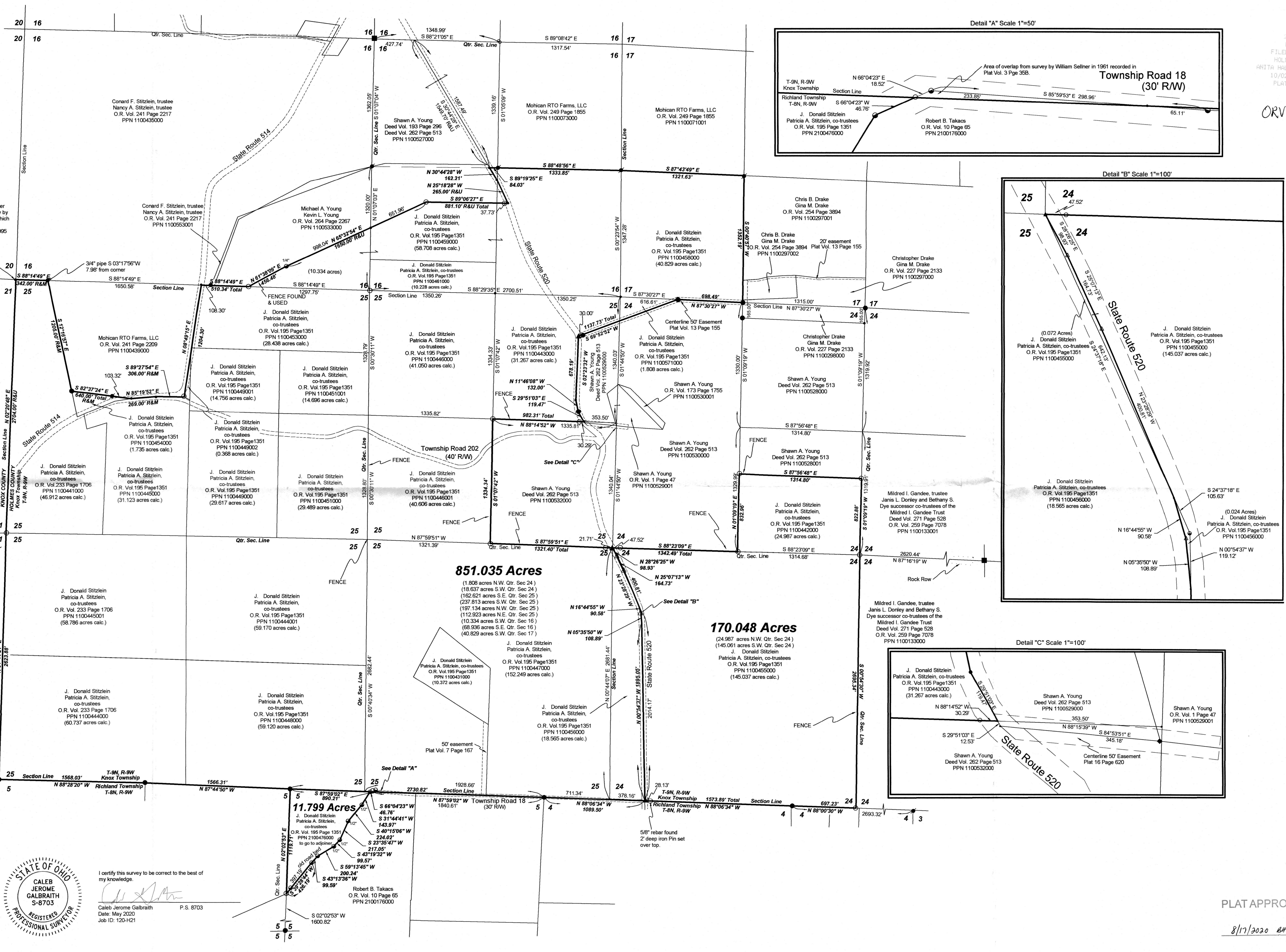
J. Donald Stitzlein, Patricia A. Stitzlein, co-trustees  
O.R. Vol. 195 Page 1351  
PPN 1100431000  
(10.372 acres calc.)

J. Donald Stitzlein, Patricia A. Stitzlein, co-trustees  
O.R. Vol. 195 Page 1351  
PPN 1100447000  
(152.249 acres calc.)

J. Donald Stitzlein, Patricia A. Stitzlein, co-trustees  
O.R. Vol. 195 Page 1351  
PPN 110045000  
(18.565 acres calc.)

J. Donald Stitzlein, Patricia A. Stitzlein, co-trustees  
O.R. Vol. 233 Page 1706  
PPN 110044000  
(60.737 acres calc.)

J. Donald Stitzlein, Patricia A. Stitzlein, co-trustees  
O.R. Vol. 195 Page 1351  
PPN 1100448000  
(59.120 acres calc.)



P.2-605  
33020210994  
B: 2 P: 605  
FILED FOR RECORD IN  
HOLMES COUNTY, OH  
WHITA HALL, COUNTY RECORDER  
10/02/2020 12:41 PM  
PLAT LARGE : 86.40  
PAGES: 1  
ORV 274 Pgs 143 +  
161

APPROVED FOR TRANSFER ONLY  
NO SUBDIVISION PLAT REQUIRED  
C.R.C. 711.001 & 711.131  
Lands not for building unless  
approved by Board of Health.  
HOLMES CO. PLANNING COMMISSION  
By: \_\_\_\_\_ Date: 10/17/2020



I certify this survey to be correct to the best of my knowledge.  
Caleb Jerome Galbraith  
Date: May 2020  
Job ID: 120-H21

Pioneer Surveying & Services, LLC  
5434 Township Road 377  
Millsburg, Ohio 46854  
Phone: 330-231-0497  
Email: caleb@pioneersurveyingandservices.com

PLAT APPROVED

8/17/2020 BH