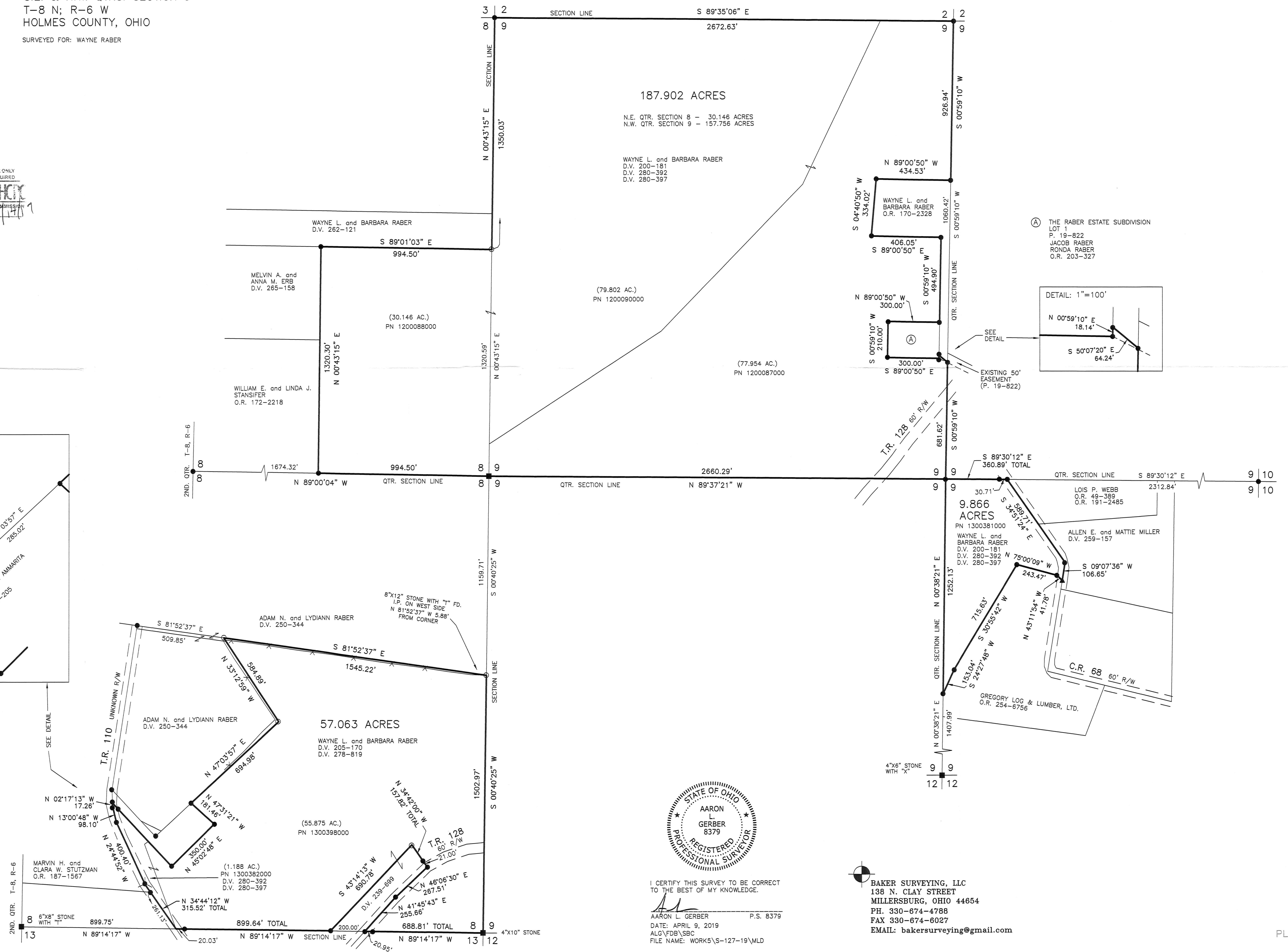
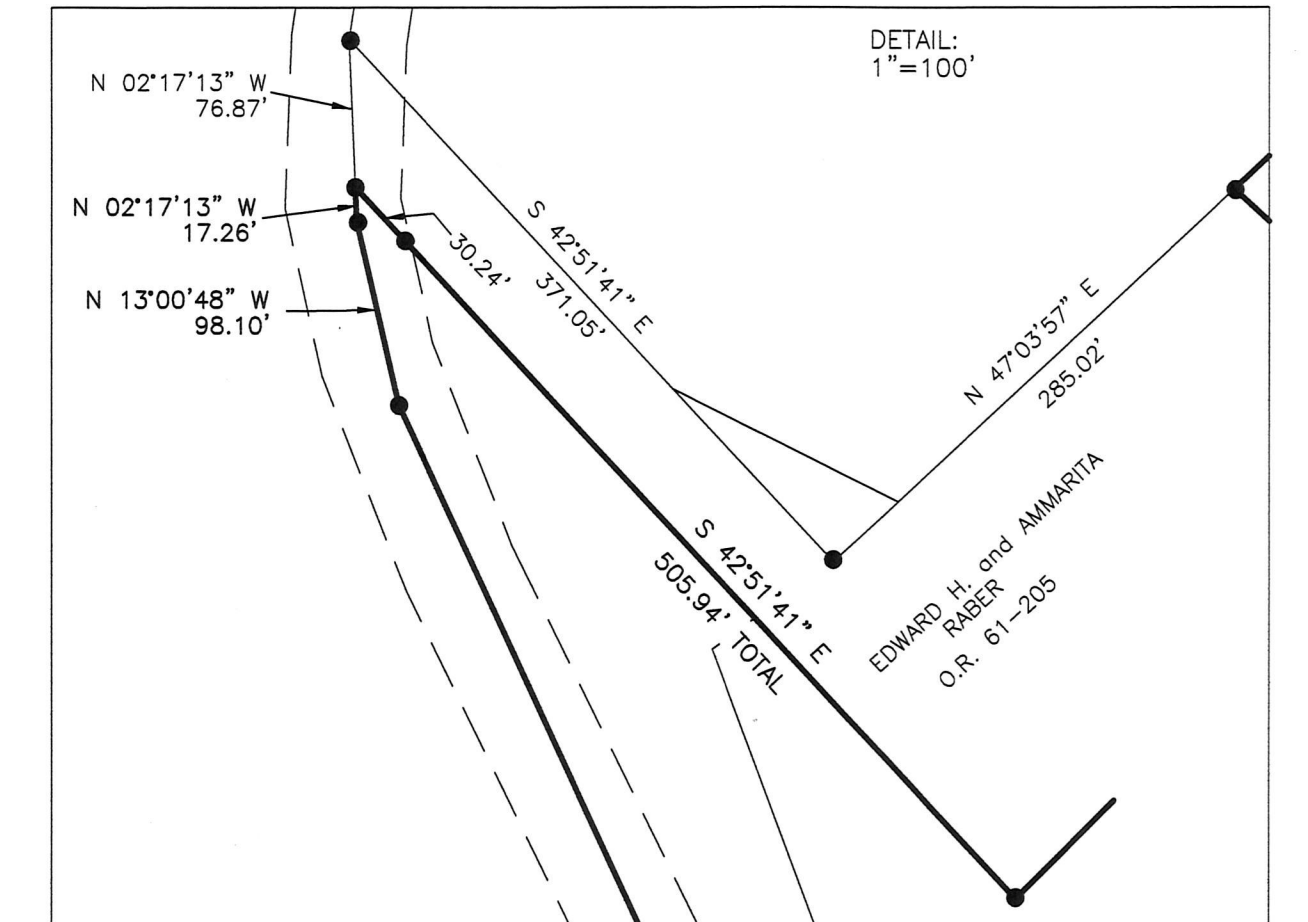


MECHANIC TOWNSHIP  
 N.E. & S.E. QTRS. SECTION 8,  
 S.E. & N.W. QTRS. SECTION 9  
 T-8 N; R-6 W  
 HOLMES COUNTY, OHIO  
 SURVEYED FOR: WAYNE RABER

- REFERENCES  
 DEED VOL. 280 PAGE 397  
 DEED VOL. 278 PAGE 819  
 DEED VOL. 239 PAGE 699  
 O.R. VOL. 61 PAGE 205  
 PLAT VOL. 17 PAGE 674  
 PLAT VOL. 12 PAGE 34  
 PLAT VOL. 19 PAGE 2887  
 PLAT VOL. 12 PAGE 705  
 PLAT VOL. 14 PAGE 428  
 PLAT VOL. 14 PAGE 347  
 PLAT VOL. 19 PAGE 577  
 PLAT VOL. 17 PAGE 550  
 PLAT VOL. 10 PAGE 913  
 PLAT VOL. 19 PAGE 822  
 PLAT VOL. 19 PAGE 17  
 BEARINGS FROM OHIO STATE PLANE  
 COORDINATE SYSTEM, NORTH ZONE,  
 N.A.D. 83

APPROVED FOR TRANSFER ONLY  
 NO SUBDIVISION PLAT REQUIRED  
 (O.R.C. 711.001 & 711.131)  
 Lot(s) not for building unless  
 approved by Board of Health  
 HOLMES CO. PLANNING COMMISSION  
 By: [Signature] Date: 5/11/19



I CERTIFY THIS SURVEY TO BE CORRECT  
 TO THE BEST OF MY KNOWLEDGE.  
 AARON L. GERBER P.S. 8379  
 DATE: APRIL 9, 2019  
 ALG\FDB\SBC  
 FILE NAME: WORKS\5-127-19\MLD

BAKER SURVEYING, LLC  
 138 N. CLAY STREET  
 MILLERSBURG, OHIO 44654  
 PH. 330-674-4788  
 FAX 330-674-6027  
 EMAIL: bakersurveying@gmail.com