

RECORD PLAT THE COVE AT WALNUT CREEK CONDOMINIUM PHASE 2 PART OF THE N.E. AND S.E. QUARTER OF SECTION 19 AND PART OF THE S.W. QUARTER OF SECTION 20 TWP. 9, RANGE 5 AND PART OF OUT LOTS 11, 12 AND 21 IN THE VILLAGE OF WALNUT CREEK WALNUT CREEK TOWNSHIP HOLMES COUNTY, OHIO

SCALE 1" = 60' OCTOBER 8, 2012

- NOTES: 1. INDICATES IRON PIN FOUND AS NOTED. 2. INDICATES 5/8" SOLID IRON PIN SET OR TO BE SET WITH CAP "CIVIL DESIGN". 3. BEARINGS ARE REFERENCED TO N 05°07'06" E, THE WEST LINE OF THE S.W. QTR. OF SECTION 20, AS RECORDED IN SURVEY PLAT VOL. 12, PAGE 954. 4. SURVEY REFERENCES: TAX MAPS DEEDS AS NOTED CENTERLINE SURVEY PLAT, PLAT BOOK 4, PAGE 36 SURVEY PLAT VOL. 4, PAGE 113 SURVEY PLAT VOL. 9, PAGE 206 SURVEY PLAT VOL. 10, PAGE 129 SURVEY PLAT VOL. 10, PAGE 665 SURVEY PLAT VOL. 12, PAGE 954 SURVEY PLAT VOL. 13, PAGE 52 SURVEY PLAT VOL. 14, PAGE 724 SURVEY PLAT VOL. 18, PAGE 302 SURVEY PLAT VOL. 2, PAGE 507 SURVEY PLAT VOL. 2, PAGE 510 SURVEY PLAT VOL. 2, PAGE 516

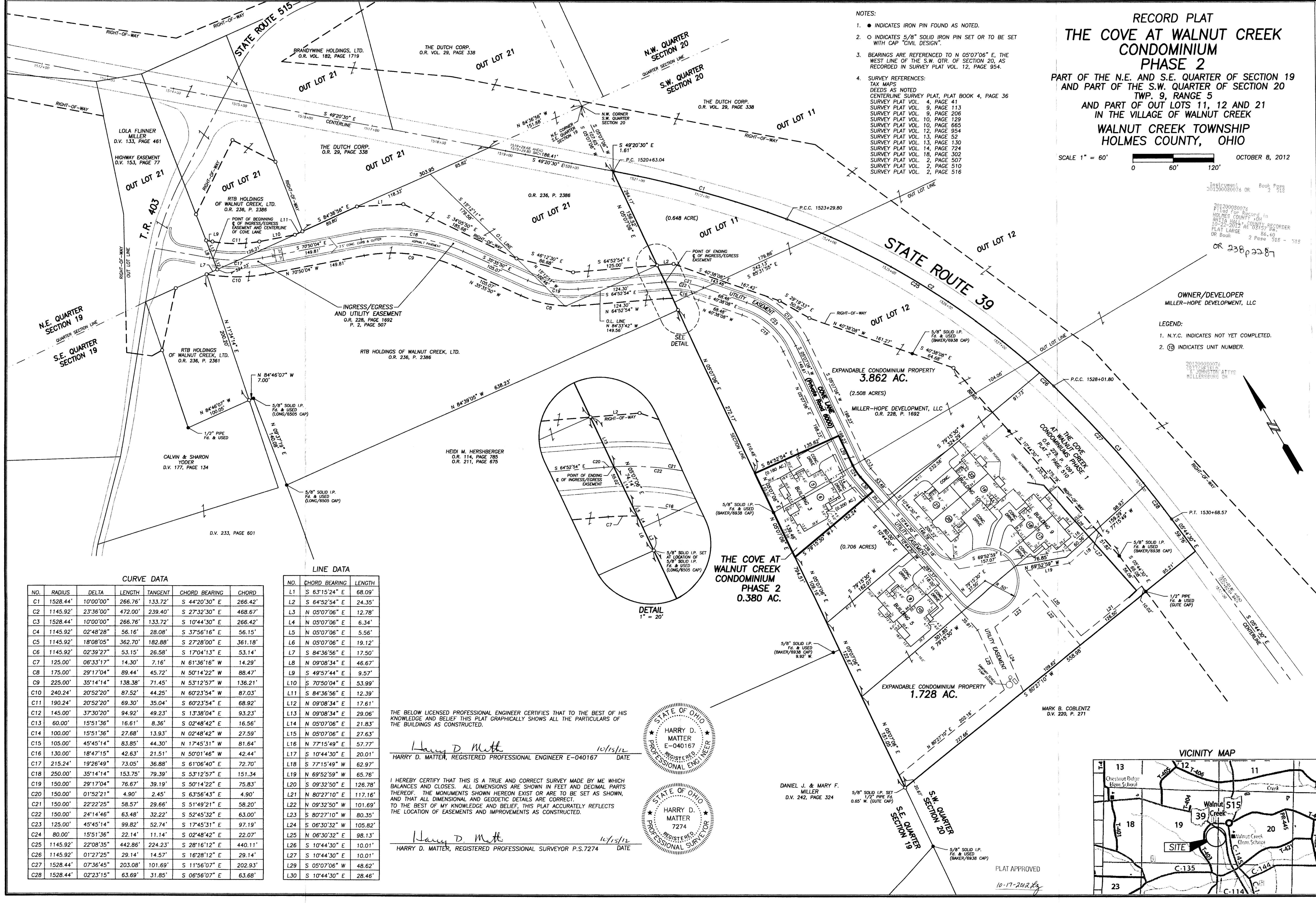
Instrument 201200080074 OR Book Page 2 518

201200080074 FILED FOR RECORD IN HOLMES COUNTY, OHIO JULIA HULL, COUNTY RECORDER 10-22-2012 AT 10:37 AM PLAT LARGE 86.40' OR Book 2 Page 518 - 519 OR 238p2287

OWNER/DEVELOPER MILLER-HOPE DEVELOPMENT, LLC

- LEGEND: 1. N.Y.C. INDICATES NOT YET COMPLETED. 2. @ INDICATES UNIT NUMBER.

201200080074 FILED FOR RECORD IN HOLMES COUNTY, OHIO JULIA HULL, COUNTY RECORDER 10-22-2012 AT 10:37 AM PLAT LARGE 86.40' OR Book 2 Page 518 - 519 OR 238p2287



CURVE DATA table with columns: NO., RADIUS, DELTA, LENGTH, TANGENT, CHORD BEARING, CHORD. Rows C1 through C28.

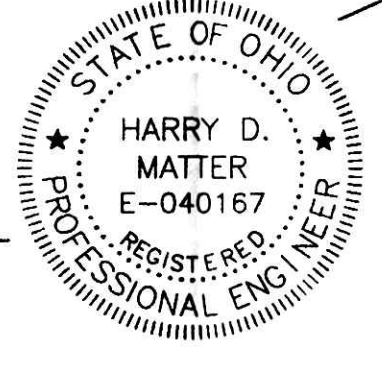
LINE DATA table with columns: NO., CHORD BEARING, LENGTH. Rows L1 through L30.

THE BELOW LICENSED PROFESSIONAL ENGINEER CERTIFIES THAT TO THE BEST OF HIS KNOWLEDGE AND BELIEF THIS PLAT GRAPHICALLY SHOWS ALL THE PARTICULARS OF THE BUILDINGS AS CONSTRUCTED.

Harry D. Matter, REGISTERED PROFESSIONAL ENGINEER E-040167 DATE 10/15/12

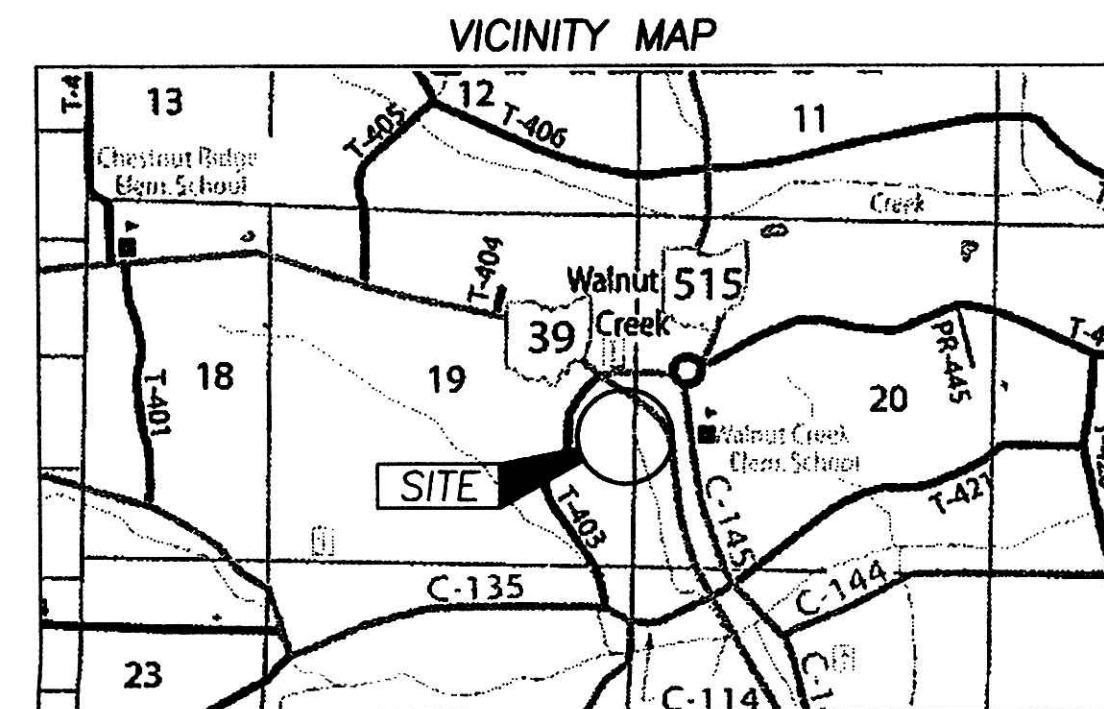
I HEREBY CERTIFY THAT THIS IS A TRUE AND CORRECT SURVEY MADE BY ME WHICH BALANCES AND CLOSES. ALL DIMENSIONS ARE SHOWN IN FEET AND DECIMAL PARTS THEREOF. THE MONUMENTS SHOWN HEREON EXIST OR ARE TO BE SET AS SHOWN, AND THAT ALL DIMENSIONAL AND GEODETIC DETAILS ARE CORRECT. TO THE BEST OF MY KNOWLEDGE AND BELIEF, THIS PLAT ACCURATELY REFLECTS THE LOCATION OF EASEMENTS AND IMPROVEMENTS AS CONSTRUCTED.

Harry D. Matter, REGISTERED PROFESSIONAL SURVEYOR P.S.7274 DATE 10/15/12



DANIEL J. & MARY F. MILLER, D.V. 242, PAGE 324

MARK B. COBLENTZ, D.V. 229, P. 271



Civil Design Associates, Inc. Consulting Engineers & Surveyors 1760 BRIGHAM ROAD S.E. NEW PHILADELPHIA, OHIO 44663 (330) 339-4242

RECORD PLAT THE COVE AT WALNUT CREEK CONDOMINIUM PHASE 2 HOLMES COUNTY, OHIO

REVISIONS table with columns: NO., DATE, BY, CHKD, DESCRIPTION.

PROJECT No. 6066 SHEET No. 1 DATE: OCTOBER, 2012 DRAWN BY: RDA