

AGENT:  
 MIKE KICK  
 14584 TWP. RD. 468  
 LAKEVILLE, OHIO 44638  
 PHONE: 419-827-2496

# LAKELAND BEACH SUBDIVISION (PLAT VOL. 1 PAGES 379 & 380) REPLAT OF PART OF OUTLOTS 1 & 6 AND LOTS 17-28 & LOTS 32-39 (FINAL)

**REFERENCES**

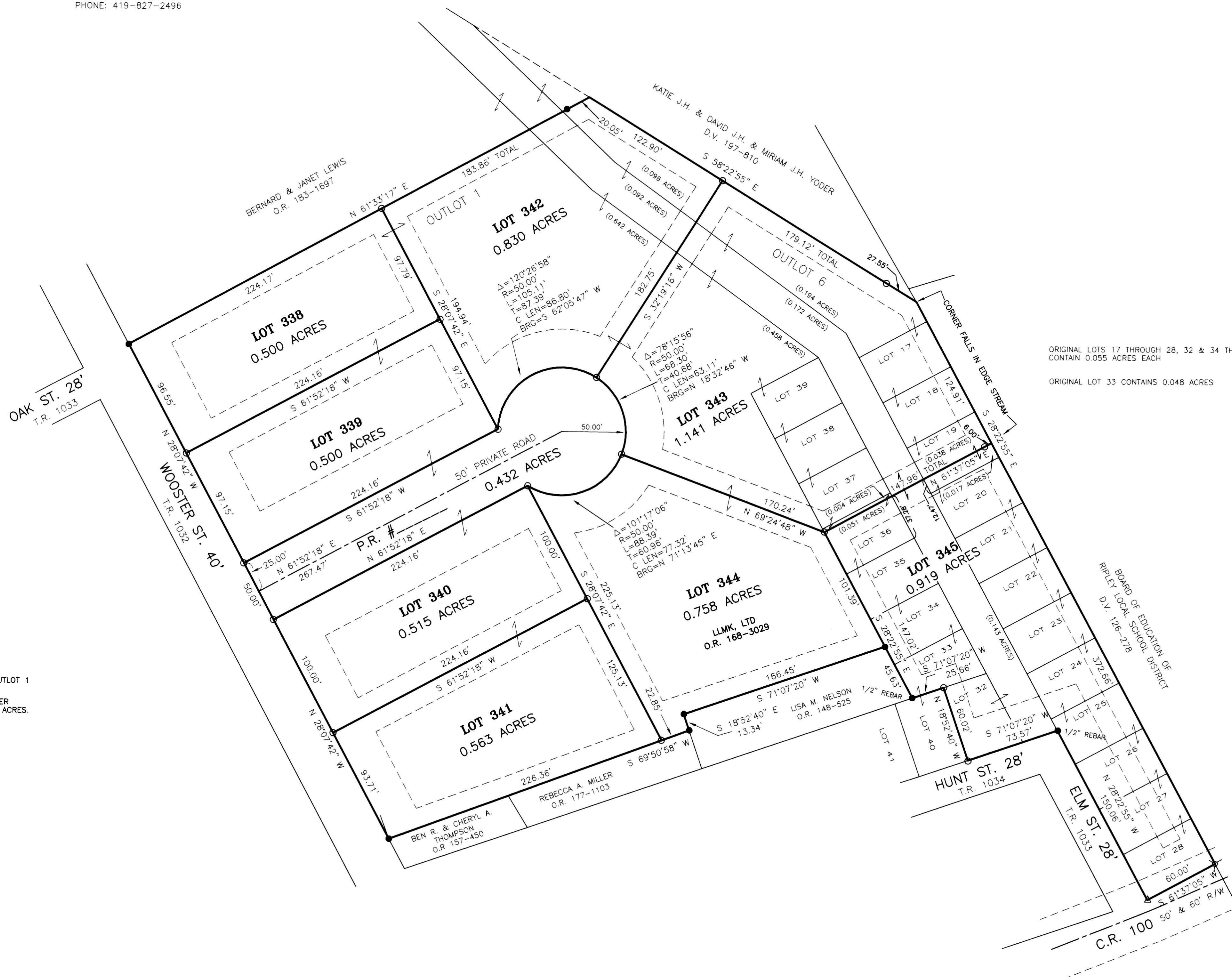
- DEED VOL. 197 PAGE 810
- O.R. VOL. 148 PAGE 525
- O.R. VOL. 157 PAGE 450
- O.R. VOL. 168 PAGE 3029
- O.R. VOL. 177 PAGE 1103
- O.R. VOL. 183 PAGE 1697
- PLAT VOL. 2 PAGE 358
- PLAT VOL. 18 PAGES 613 & 681
- PLAT VOL. 19 PAGE 506
- BEARINGS FROM PLAT VOL. 19 PAGE 506

THESE LOTS ARE FOR RESIDENTIAL PURPOSES ONLY.  
 NO FURTHER SPLITS WILL BE PERMITTED  
 WITHOUT REPLATTING SAID LOTS.  
 NOTE: BUILDING SETBACK LINES ARE 15'  
 OFF SIDE AND REAR LINES AND  
 30' OFF ROAD RIGHT OF WAY

For erosion and sedimentation control, the landowner  
 will follow the Rowley and Land Development, Ohio's  
 Standards for Stormwater Management and Urban  
 Street Protection. A copy of the Rowley and Land  
 Development, Ohio's Standards is available at the  
 Holmes Soil and Water Conservation District Office,  
 62 W. Clinton Street  
 Millersburg, Ohio 44654.  
 State regulated permits and plans may be required  
 by the Ohio Environmental Protection Agency to  
 address stormwater and sedimentation issues.

ACREAGE IN LOT 5.726 ACRES  
 ACREAGE IN ROAD DEDICATION 0.432 ACRES  
 TOTAL ACREAGE 6.158 ACRES

NOTE:  
 THE RESIDUE OF TAX PARCEL NUMBER 2360000000 IN OUTLOT 1  
 CONTAINS A CALCULATED ACREAGE OF 0.014 ACRES.  
 THE RESIDUE OF VACATED ELM STREET TAX PARCEL NUMBER  
 2300951000 CONTAINS A CALCULATED ACREAGE OF 0.007 ACRES.



NOTE: SIGN IN PERMANENT BLACK INK

CERTIFICATE OF OWNERSHIP AND DEDICATION  
 We certify that we are the owners of the property  
 shown and described hereon and that we hereby adopt this  
 plan of subdivision with our free consent and establish the  
 minimum building restriction lines.  
 Mike Kick 12/27/06  
 LLMK, LTD DATE

CERTIFICATE OF DEDICATION OF PRIVATE ROAD  
 We, the undersigned, grant unto hereon shown Lots 339, 340,  
 342, 343 & 344 their heirs and assigns, a 50' Private Road for  
 the purpose of ingress, egress and utilities as shown on this  
 plan of subdivision.  
 Amy Clader 12/27/06  
 LLMK, LTD DATE

CERTIFICATE OF APPROVAL OF WATER SUPPLY AND SEWAGE  
 TREATMENT SYSTEMS  
 I hereby certify that the subdivision plat entitled LAKELAND  
 BEACH SUBDIVISION (PLAT VOL. 1 PAGES 379 & 380) REPLAT  
 OF PART OF OUTLOTS 1 & 6 AND LOTS 17-28 & LOTS 32-39  
 for water supply and sewage treatment and is hereby  
 approved for recording. The issuance of permits to install a  
 private water system and on-site sewage treatment  
 system of any lot is dependent on a site specific evaluation  
 prior to the start of any construction.  
 S. McCall 12-27-2006  
 Health Commissioner DATE

CERTIFICATE OF APPROVAL BY THE HOLMES SOIL AND WATER  
 CONSERVATION DISTRICT  
 I hereby certify that I have approved the subdivision plat  
 and/or agreements or provisions for sedimentation and  
 erosion control as stated or shown hereon.  
 Philip Gilmore 12-27-06  
 Holmes Soil and Water Conservation District DATE

CERTIFICATE OF APPROVAL BY THE COUNTY COMMISSIONERS  
 I hereby certify that the County Commissioners have  
 approved the subdivision plat as shown hereon.  
 Dan L. Hays 1/4/07  
 Chairman, County Commissioners DATE

CERTIFICATE OF APPROVAL OF PLAT  
 I hereby certify that I have approved the plat shown hereon  
 and that the County Engineer has approved the plat as shown hereon.  
 Donald C. Baker, P.E., P.S. 12/27/06  
 County Engineer DATE

CERTIFICATE OF APPROVAL FOR RECORDING  
 I hereby certify that the subdivision plat shown hereon has  
 been found to comply with the subdivision regulations for  
 Holmes County, Ohio, with the exception of such variances,  
 if any, as prenoted in the minutes of the Holmes County  
 Planning Commission and that it has been approved for  
 recording in the office of the County Recorder.  
 A. C. 12/28/06  
 Holmes County Planning Commission DATE

CERTIFICATE OF ACCURACY  
 I hereby certify that the plan shown and described hereon is  
 a true and correct survey to the accuracy required by the  
 Holmes County Planning Commission and that the monuments  
 have been placed as shown hereon.  
 Donald C. Baker 12-21-06  
 Donald C. Baker P.S. 6938 DATE



<p><b>DONALD C. BAKER SURVEYING</b>          138 N. CLAY STREET          MILLERSBURG, OHIO 44654          PH. 330-874-4788          FAX 330-874-6027</p>	<p>RIPLEY TOWNSHIP          N.W. QTR. SECTION 30          T-18 N; R-14 W          HOLMES COUNTY, OHIO</p>	<p style="text-align: center;">0' 50' 100' 150'            SCALE: 1"=50'          DATE: JULY 24, 2006 KES-ERZ WORK\3\S-505-06\ERZ</p>	<ul style="list-style-type: none"> <li>● 5/8" REBAR FOUND UNLESS OTHERWISE NOTED</li> <li>○ 5/8" REBAR SET WITH I.D. CAP</li> <li>○ I.D. CAP MARKED "BAKER 6938"</li> <li>△ CROWS FOOT SET IN CONC.</li> <li>△ R.R. SPIKE SET</li> </ul>
--	---	---	--

200700047856 OR Book Page  
 200700047856  
 Filed for Record in  
 HOLMES COUNTY, OH  
 SALLY MILLER, CRR  
 01-10-2007 At 02:26 PM  
 PLAT LARGE 26x40  
 OR Book Page 2 Page 401 - 401

200700047856  
 HOLMES CTY  
 TITLE  
 MILLERSBURG OH

1/19/07  
 Jackie McKee Ltd