

Instrument 200600046564 OR 2 434

200600046564  
Filed for Record in  
HOLMES COUNTY OH  
10-21-2006 at 12:28 PM  
RE: AT LARGE  
Vol 146 pg 2501

200600046564  
HAMMONTREE & ASSOCIATES, LTD.  
ENGINEERS, PLANNERS, SURVEYORS  
CANTON PITTSBURGH AKRON  
5233 STONINGHAM ROAD, NORTH CANTON, OHIO 44720  
PHONE: CANTON (330) 498-8817 AKRON: (330) 633-7274  
TOLL FREE: 1-800-394-8817 FAX: (330) 498-3149  
www.hammontree-engineers.com

### LEGEND

- PROPERTY MARKER FOUND AS NOTED
- 1/2 INCH IRON BAR WITH H&A CAP SET
- CENTERLINE
- LOT LINE
- R/W RIGHT-OF-WAY

VILLAGE OF MILLERSBURG  
T-9 R-7 SEC 22  
HARDY TWP.  
HOLMES COUNTY, OHIO

HOLMESVILLE MANUFACTURING AND DISTRIBUTION CENTER, INC.  
D.V. 273 825-976  
8/31/1993

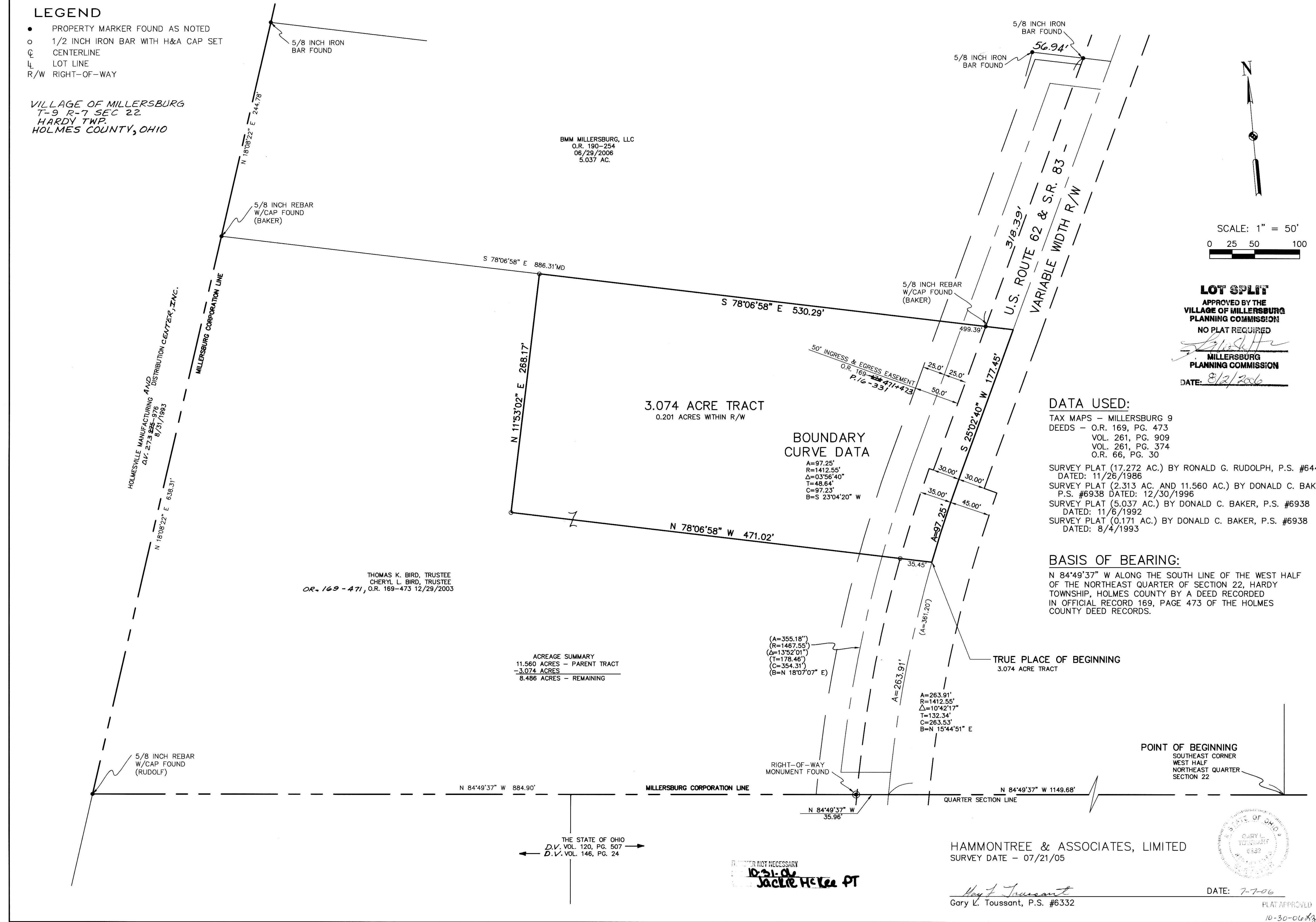
THOMAS K. BIRD, TRUSTEE  
SHERYL L. BIRD, TRUSTEE  
OR-169-471, O.R. 169-473 12/29/2003

BMM MILLERSBURG, LLC  
O.R. 190-254  
06/29/2006  
5.037 AC.

ACREAGE SUMMARY  
 11.560 ACRES - PARENT TRACT  
 - 3.074 ACRES  
 8.486 ACRES - REMAINING

(A=355.18")  
 (R=1467.55")  
 (Δ=13°52'01")  
 (T=178.46")  
 (C=354.31")  
 (B=N 18°07'07" E)

A=263.91'  
 R=1412.55'  
 Δ=10°42'17"  
 T=132.34'  
 C=263.53'  
 B=N 15°44'51" E



**LOT SPLIT**  
 APPROVED BY THE  
 VILLAGE OF MILLERSBURG  
 PLANNING COMMISSION  
 NO PLAT REQUIRED  
 MILLERSBURG  
 PLANNING COMMISSION  
 DATE: 8/2/2006

### DATA USED:

- TAX MAPS - MILLERSBURG 9
- DEEDS - O.R. 169, PG. 473
- VOL. 261, PG. 909
- VOL. 261, PG. 374
- O.R. 66, PG. 30
- SURVEY PLAT (17.272 AC.) BY RONALD G. RUDOLPH, P.S. #6449 DATED: 11/26/1986
- SURVEY PLAT (2.313 AC. AND 11.560 AC.) BY DONALD C. BAKER, P.S. #6938 DATED: 12/30/1996
- SURVEY PLAT (5.037 AC.) BY DONALD C. BAKER, P.S. #6938 DATED: 11/6/1992
- SURVEY PLAT (0.171 AC.) BY DONALD C. BAKER, P.S. #6938 DATED: 8/4/1993

### BASIS OF BEARING:

N 84°49'37" W ALONG THE SOUTH LINE OF THE WEST HALF OF THE NORTHEAST QUARTER OF SECTION 22, HARDY TOWNSHIP, HOLMES COUNTY BY A DEED RECORDED IN OFFICIAL RECORD 169, PAGE 473 OF THE HOLMES COUNTY DEED RECORDS.

HAMMONTREE & ASSOCIATES, LTD.  
 ENGINEERS, PLANNERS, SURVEYORS  
 CANTON PITTSBURGH AKRON  
 5233 STONINGHAM ROAD, NORTH CANTON, OHIO 44720  
 PHONE: CANTON (330) 498-8817 AKRON: (330) 633-7274  
 TOLL FREE: 1-800-394-8817 FAX: (330) 498-3149  
 www.hammontree-engineers.com

MAP OF SURVEY - 3.074 ACRE TRACT  
 TRACTOR SUPPLY  
 FOR: HEMMER  
 LOCATED IN THE VILLAGE OF MILLERSBURG,  
 HOLMES COUNTY, OHIO

DATE: 7-7-06  
 PLAT APPROVED  
 10-30-06

GARY L. TOUSSANT  
 SURVEYOR  
 6530

GARY L. TOUSSANT, P.S. #6332

1  
1