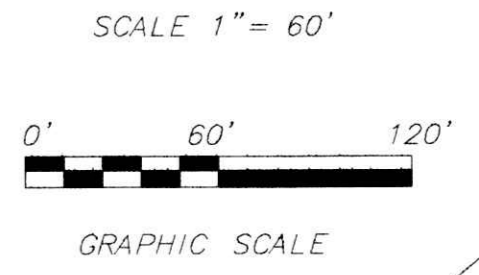


| NO. | REVISION | DATE |
|-----|----------|------|
|     |          |      |
|     |          |      |
|     |          |      |



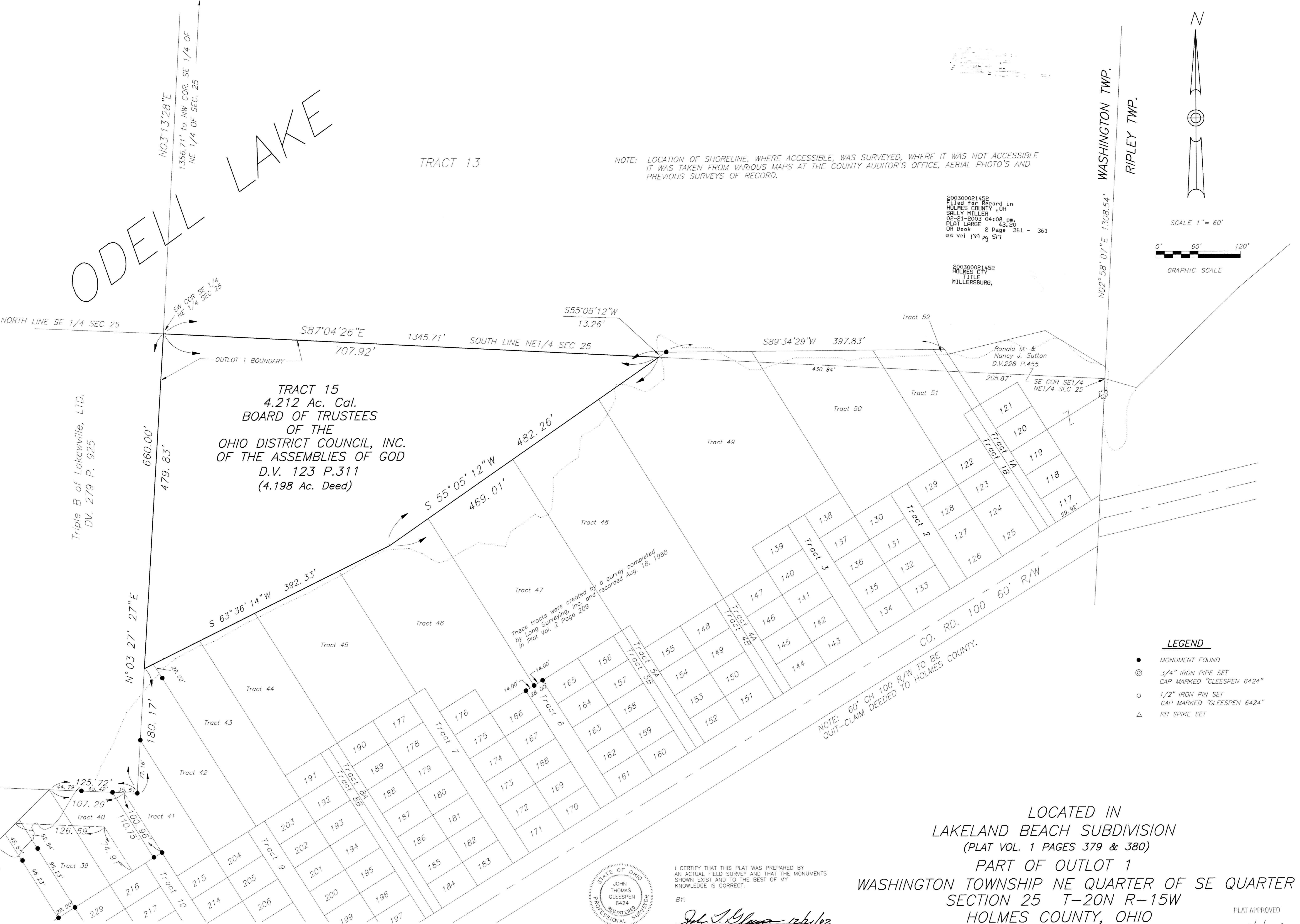
ODELL LAKE

TRACT 13

NOTE: LOCATION OF SHORELINE, WHERE ACCESSIBLE, WAS SURVEYED, WHERE IT WAS NOT ACCESSIBLE IT WAS TAKEN FROM VARIOUS MAPS AT THE COUNTY AUDITOR'S OFFICE, AERIAL PHOTO'S AND PREVIOUS SURVEYS OF RECORD.

200300021452  
Filed for Record in  
HOLMES COUNTY, OH  
SALLY MILLER  
02-21-2003 04:08 pm  
PLAT LARGE 43.20  
DR Book 2 Page 361 - 361  
ex vol 139 pg 517

200300021452  
HOLMES CITY  
TITLE  
MILLERSBURG,



**LEGEND**

- MONUMENT FOUND
- ⊙ 3/4" IRON PIPE SET  
CAP MARKED "GLEESPEN 6424"
- 1/2" IRON PIN SET  
CAP MARKED "GLEESPEN 6424"
- △ RR SPIKE SET

LOCATED IN  
LAKELAND BEACH SUBDIVISION  
(PLAT VOL. 1 PAGES 379 & 380)  
PART OF OUTLOT 1  
WASHINGTON TOWNSHIP NE QUARTER OF SE QUARTER  
SECTION 25 T-20N R-15W  
HOLMES COUNTY, OHIO



I CERTIFY THAT THIS PLAT WAS PREPARED BY AN ACTUAL FIELD SURVEY AND THAT THE MONUMENTS SHOWN EXIST AND TO THE BEST OF MY KNOWLEDGE IS CORRECT.

BY:  
*John T. Gleespen* 12/4/02  
John T. Gleespen, P.S. 6424

PLAT APPROVED  
*alr/lossy*  
5/16