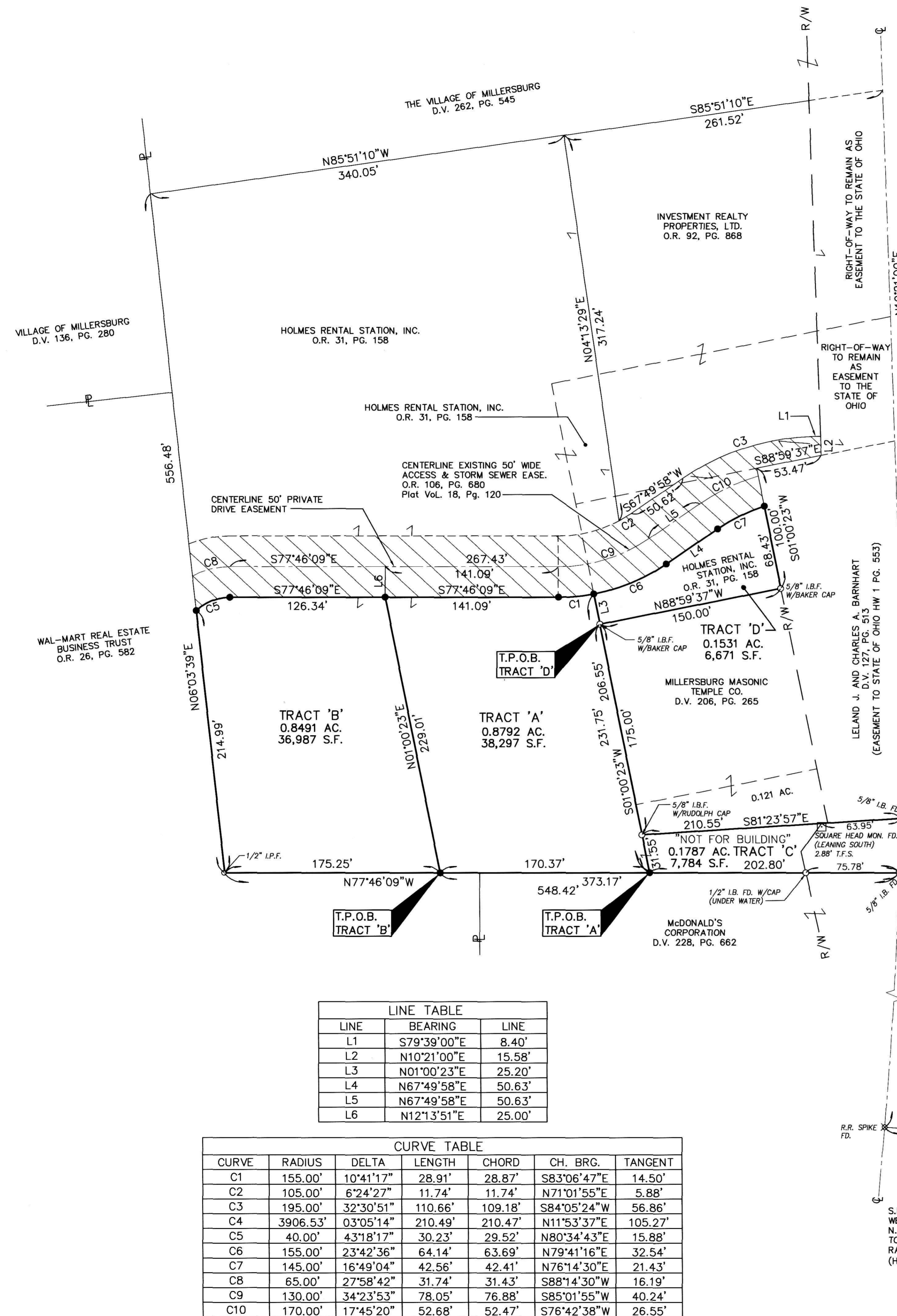


H:\Land Projects R2\02212\dwg\02212-PS.dwg 08/21/02 01:31:12 PM EDT

Reference Files: h:\Land Projects R2\Download\Survey\02212tpo.fb



LINE	BEARING	LINE
L1	S79°39'00"E	8.40'
L2	N10°21'00"E	15.58'
L3	N01°00'23"E	25.20'
L4	N67°49'58"E	50.63'
L5	N67°49'58"E	50.63'
L6	N12°13'51"E	25.00'

CURVE	RADIUS	DELTA	LENGTH	CHORD	CH. BRG.	TANGENT
C1	155.00'	10°41'17"	28.91'	28.87'	S83°06'47"E	14.50'
C2	105.00'	6°24'27"	11.74'	11.74'	N71°01'55"E	5.88'
C3	195.00'	32°30'51"	110.66'	109.18'	S84°05'24"W	56.86'
C4	3906.53'	03°05'14"	210.49'	210.47'	N11°53'37"E	105.27'
C5	40.00'	43°18'17"	30.23'	29.52'	N80°34'43"E	15.88'
C6	155.00'	23°42'36"	64.14'	63.69'	N79°41'16"E	32.54'
C7	145.00'	16°49'04"	42.56'	42.41'	N76°14'30"E	21.43'
C8	65.00'	27°58'42"	31.74'	31.43'	S88°14'30"W	16.19'
C9	130.00'	34°23'53"	78.05'	76.88'	S85°01'55"W	40.24'
C10	170.00'	17°45'20"	52.68'	52.47'	S76°42'38"W	26.55'

SYMBOL LEGEND

- IRON BAR OR PIN FOUND AS NOTED
- MONUMENT FOUND AS NOTED
- 1/2" IRON BAR WITH COOPER & ASSOCIATES CAP SET
- × RAILROAD SPIKE FOUND

PERTINENT DOCUMENTS

- O.R. 31, PG. 158 - DEED OF RECORD
- OWNER - HOLMES RENTAL STATION - (5.684 AC.)
- D.V. 206, PG. 265
- D.V. 127, PG. 513
- ODOT PLANS: HOL-62(19.04-19.07)
- D.V. 228, PG. 662
- P.B. 15, PG. 41
- O.R. 26, PG. 582
- D.V. 136, PG. 280
- D.V. 262, PG. 545
- O.R. 92, PG. 868
- P.B. 2, PG. 193
- P.B. 2, PG. 185
- O.R. 106, PG. 680

REFERENCE DIRECTION

THE BEARING SYSTEM WAS ESTABLISHED USING N10°21'00"E FOR A PORTION OF THE CENTERLINE OF U.S. 62, ST. RT. 83, WHICH WAS DERIVED FROM AN ANNEXATION PLAT, AS RECORDED IN PLAT BOOK 2, PAGE 185 OF THE HOLMES COUNTY PLAT RECORDS.

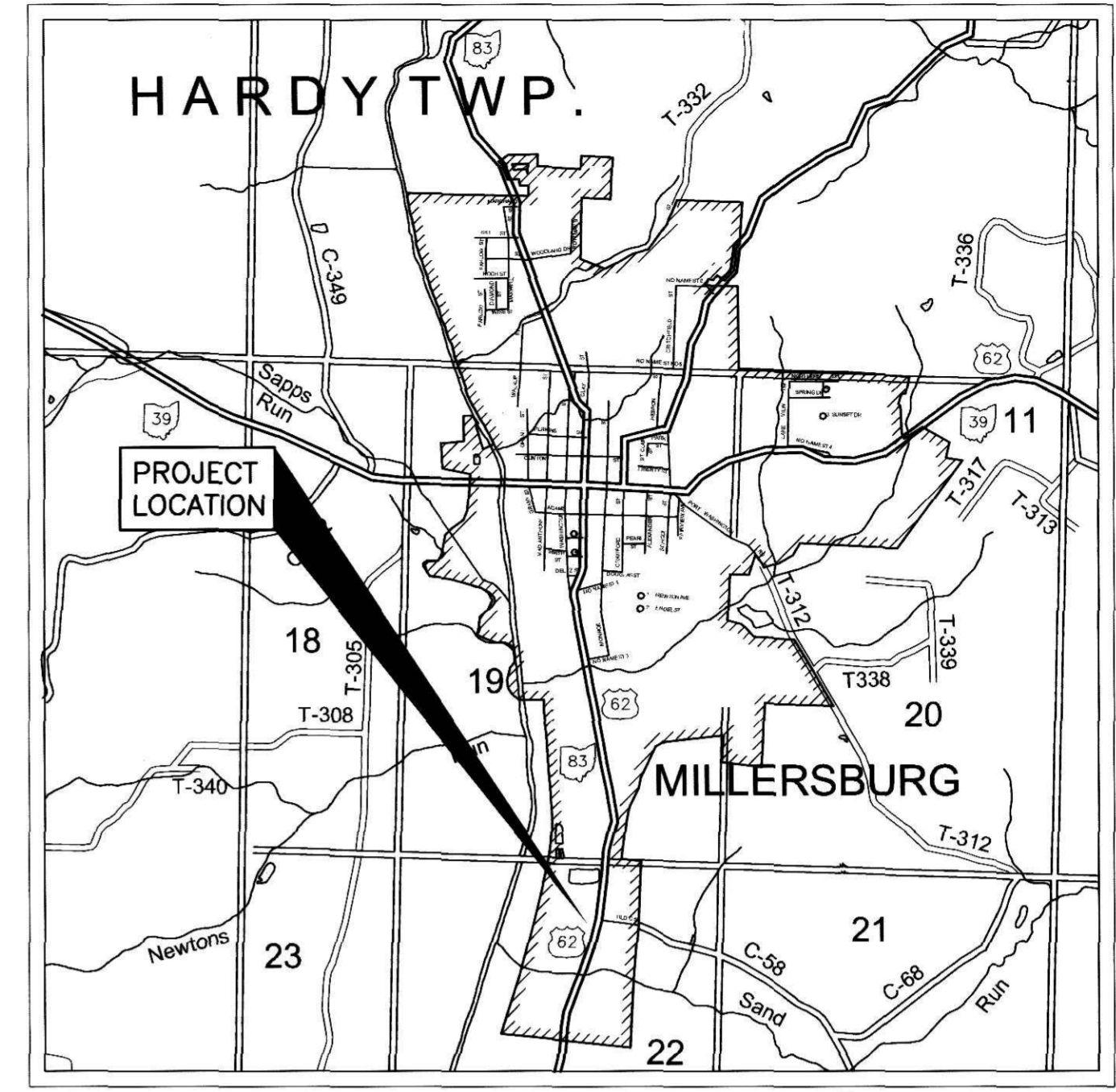
CERTIFICATION

I HEREBY CERTIFY THAT THIS PLAT WAS PREPARED FROM AN ACTUAL SURVEY OF THE PREMISES IN JUNE 2002 AND IS CORRECT TO THE BEST OF MY KNOWLEDGE

JEROLD E. GEIB
REGISTERED SURVEYOR NO. 6725
DATE 8/21/02



TRANSFER NOT NECESSARY
DATE 10-15-02 KBB
AUDITOR Jackie McCre

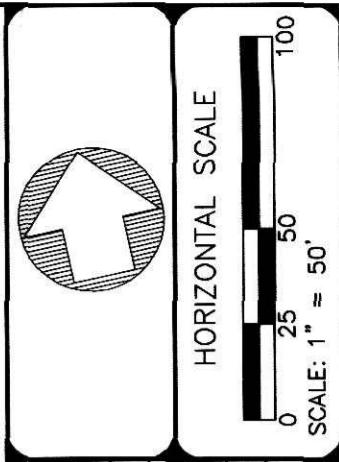


LOCATION MAP
SCALE: 1:2500

200200018723
Filed for Record in
HOLMES COUNTY, OH
SALLY MILLER
10-15-2002 02:32 PM
PLAT LARGE 43x23
DR Book 2 Page 353 - 353

200200018723
THOMAS D
GINDLESBERGER ATTY
MILLERSBURG,

NO PLAY REQUIRED
PLANNING COMMISSION
August 7, 2002



REVISIONS

NO.	DATE	DESCRIPTION

COOPER & ASSOCIATES, LLP
ENGINEERS AND SURVEYORS
PHONE (330) 452-5731
FAX (330) 452-9110



PLAT OF SURVEY
LOCATED IN THE VILLAGE OF MILLERSBURG, AS SITUATED IN THE WEST HALF OF THE NORTHEAST QUARTER OF SECTION 22, TOWNSHIP 9 NORTH, RANGE 7 WEST, (HARDY TWP.), HOLMES COUNTY OHIO.
FOR: WENDY'S INTERNATIONAL

DRAWN BY: M.B.J.	PLAT APPROVED
CHECKED BY: R.R.D.	10-9-02
FIELD BOOK NO. 542	1 OF 1
DATE 08/10/2002	PROJ.# 02212
SHEET	