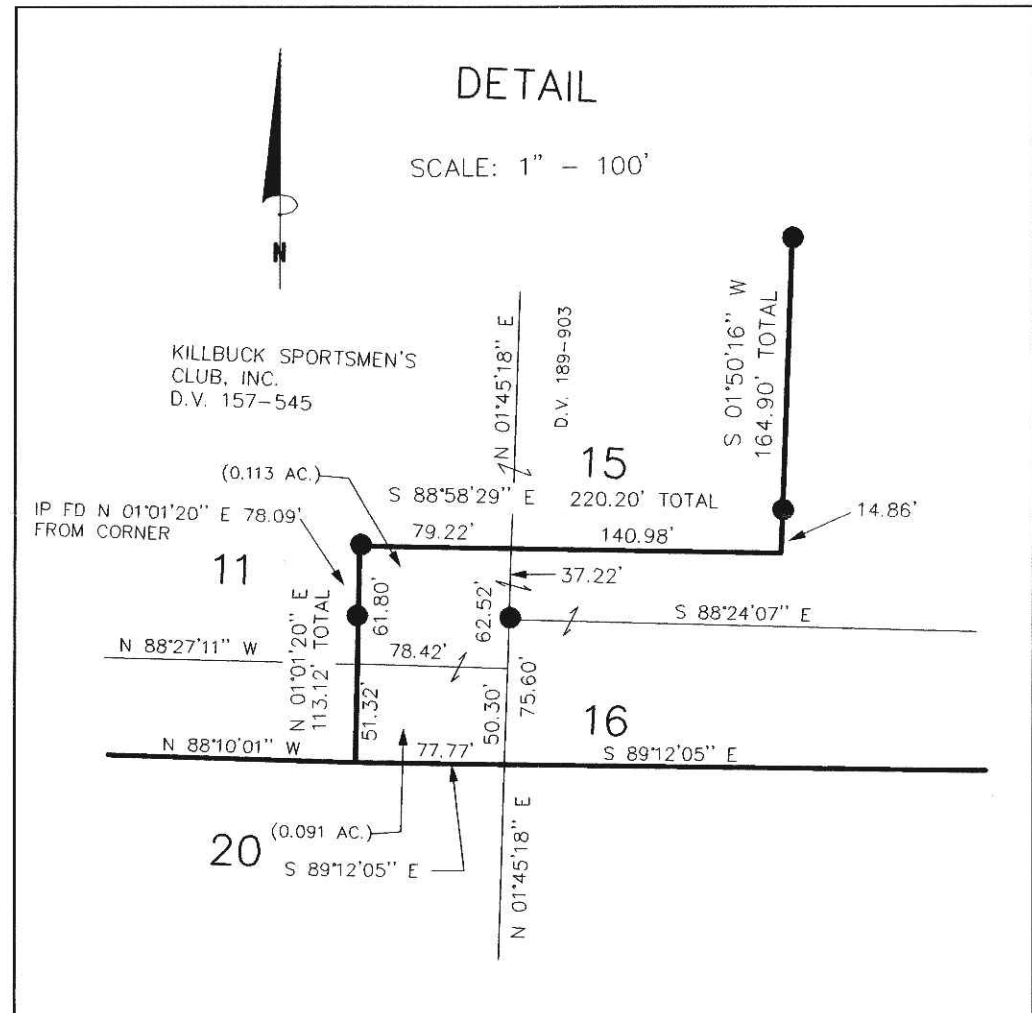
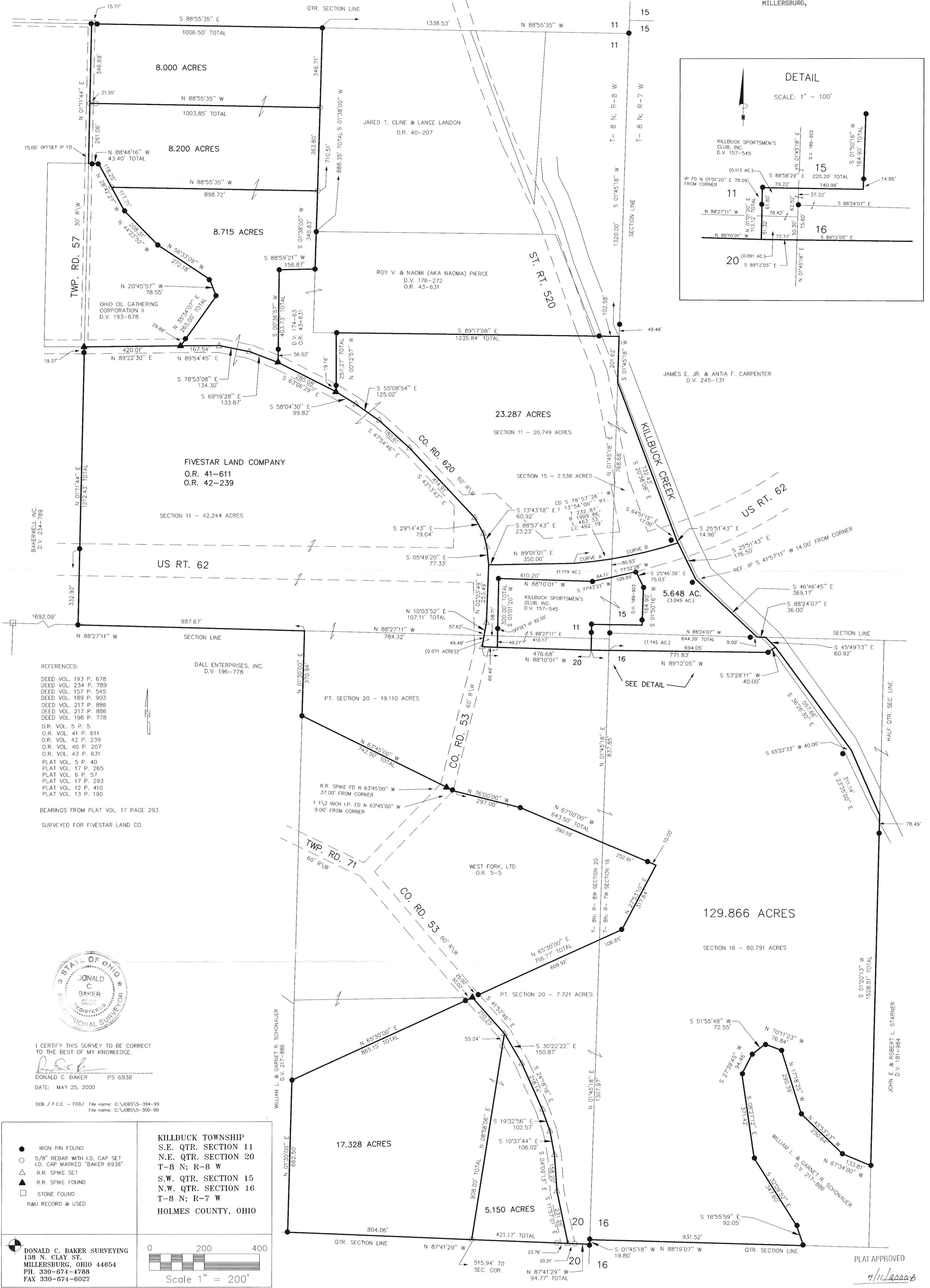


CURVE A	CURVE B
CD S 83°24'30" W I 4'59'52" Rt. T 83.35' R 1909.86' L 166.60' LC 166.54'	CD S 76°27'30" W I 8'54'07" Rt. T 148.67' R 1909.86' L 296.73' LC 296.44'

20000003088
Filed for Record in
HOLMES COUNTY, OH
SOLLY MILLER
On 07-18-2000 At 11:30 am.
PLAT LARGE Page 43.20
OR Book 2 Page 313 - 313
OR Vol 55 pg 5449/452/453/464/

20000003088
PAUL R
MILLER LAW
MILLERSBURG,



- REFERENCES:
- DEED VOL. 193 P. 678
 - DEED VOL. 234 P. 789
 - DEED VOL. 157 P. 545
 - DEED VOL. 189 P. 903
 - DEED VOL. 217 P. 886
 - DEED VOL. 217 P. 886
 - DEED VOL. 196 P. 778
 - O.R. VOL. 5 P. 5
 - O.R. VOL. 41 P. 611
 - O.R. VOL. 42 P. 239
 - O.R. VOL. 40 P. 207
 - O.R. VOL. 43 P. 631
 - PLAT VOL. 5 P. 40
 - PLAT VOL. 17 P. 265
 - PLAT VOL. 6 P. 57
 - PLAT VOL. 17 P. 293
 - PLAT VOL. 12 P. 410
 - PLAT VOL. 13 P. 190
- BEARINGS FROM PLAT VOL. 17 PAGE 293
SURVEYED FOR FIVESTAR LAND CO.



I CERTIFY THIS SURVEY TO BE CORRECT TO THE BEST OF MY KNOWLEDGE.
Donald C. Baker
DONALD C. BAKER PS 6938
DATE: MAY 25, 2000

DCB / F.C.C. - FBR/ File name: C:\JOBS\5-394-99
File name: C:\JOBS\5-300-00

<ul style="list-style-type: none"> ● IRON PIN FOUND ○ 5/8" REBAR WITH I.D. CAP SET I.D. CAP MARKED "BAKER 6938" △ R.R. SPIKE SET ▲ R.R. SPIKE FOUND □ STONE FOUND R&U RECORD & USED 	<p>KILLBUCK TOWNSHIP S.E. QTR. SECTION 11 N.E. QTR. SECTION 20 T-8 N; R-8 W S.W. QTR. SECTION 15 N.W. QTR. SECTION 16 T-8 N; R-7 W HOLMES COUNTY, OHIO</p>
<p>DONALD C. BAKER SURVEYING 138 N. CLAY ST. MILLERSBURG, OHIO 44654 PH. 330-674-4788 FAX 330-674-6027</p>	<p>Scale 1" = 200'</p>

PLAT APPROVED
1/11/2000