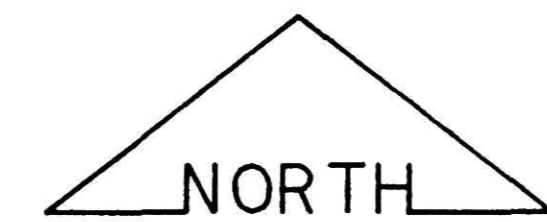
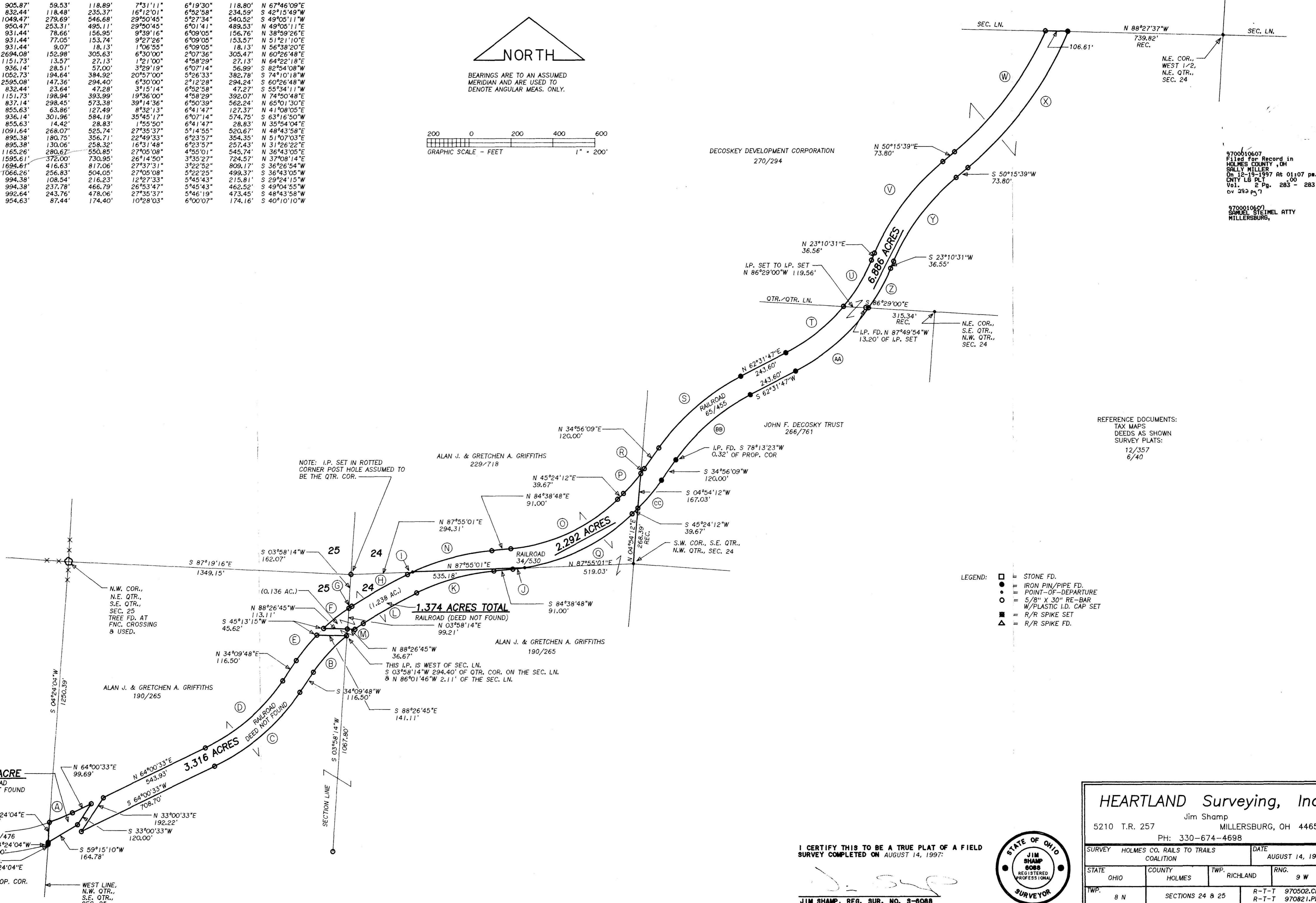
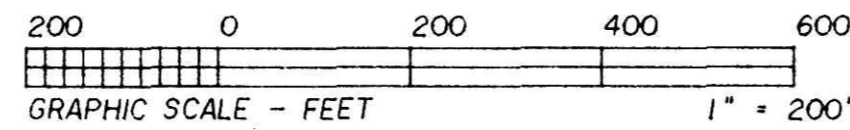


CURVE	RADIUS	TANGENT	LENGTH	DELTA	DEGREE	CHORD	CH.BEARING
A	905.87'	59.53'	118.89'	7°31'11"	6°19'30"	118.80'	N 67°46'09"E
B	832.44'	118.48'	235.37'	16°12'01"	6°52'58"	234.59'	S 42°15'49"W
C	1049.47'	279.69'	546.68'	29°50'45"	5°27'34"	540.52'	S 49°05'11"W
D	950.47'	253.31'	495.11'	29°50'45"	6°01'41"	489.53'	N 49°05'11"E
E	931.44'	78.66'	156.95'	9°39'16"	6°09'05"	156.76'	N 38°59'26"E
F	931.44'	78.66'	156.95'	9°39'16"	6°09'05"	156.76'	N 38°59'26"E
G	931.44'	9.07'	18.13'	1°06'55"	6°09'05"	18.13'	N 56°38'20"E
H	2694.08'	152.98'	306.63'	6°30'00"	2°07'36"	305.47'	N 60°26'48"E
I	1151.73'	13.57'	27.13'	1°21'00"	4°58'29"	27.13'	N 64°22'18"E
J	936.14'	28.51'	57.00'	3°29'19"	6°07'14"	56.99'	S 82°54'08"W
K	1052.73'	194.64'	384.92'	20°57'00"	5°26'33"	382.78'	S 74°10'18"W
L	2595.08'	147.36'	294.40'	6°30'00"	2°12'28"	294.24'	S 60°26'48"W
M	832.44'	23.64'	47.28'	3°15'14"	6°52'58"	47.27'	S 55°34'11"W
N	1151.73'	198.94'	393.99'	19°36'00"	4°58'29"	392.07'	N 74°50'48"E
O	837.14'	298.45'	573.38'	39°14'36"	6°50'39"	562.24'	N 65°01'30"E
P	855.63'	63.86'	127.49'	8°32'13"	6°41'47"	127.37'	N 41°08'05"E
Q	936.14'	301.96'	584.19'	39°45'17"	6°07'14"	574.75'	S 63°16'50"W
R	855.63'	14.42'	28.83'	1°55'50"	6°41'47"	28.83'	N 35°54'04"E
S	1091.64'	268.07'	525.74'	27°35'37"	5°14'55"	520.67'	N 48°43'58"E
T	895.38'	180.75'	356.71'	22°49'33"	6°23'57"	354.35'	N 51°07'03"E
U	895.38'	130.06'	258.32'	16°31'48"	6°23'57"	257.43'	N 31°26'22"E
V	1165.26'	280.67'	550.85'	27°05'08"	4°55'01"	545.74'	N 36°43'05"E
W	1595.61'	372.00'	730.95'	26°14'50"	3°55'27"	724.57'	N 37°08'14"E
X	1694.61'	416.63'	817.06'	27°37'31"	3°22'52"	809.17'	S 36°26'54"W
Y	1066.26'	256.83'	504.05'	27°05'08"	5°22'25"	499.37'	S 36°43'05"W
Z	994.38'	108.54'	216.23'	12°27'33"	5°45'43"	215.81'	S 29°24'15"W
AA	994.38'	237.78'	466.79'	26°53'47"	5°45'43"	462.52'	S 49°04'55"W
BB	992.64'	243.76'	478.06'	27°35'37"	5°46'19"	473.45'	S 48°43'58"W
CC	954.63'	87.44'	174.40'	10°28'03"	6°00'07"	174.16'	S 40°10'10"W



BEARINGS ARE TO AN ASSUMED MERIDIAN AND ARE USED TO DENOTE ANGULAR MEAS. ONLY.



NOTE: I.P. SET IN ROTTED CORNER POST HOLE ASSUMED TO BE THE QTR. COR.

REFERENCE DOCUMENTS:  
TAX MAPS  
DEEDS AS SHOWN  
SURVEY PLATS:  
12/357  
6/40

- LEGEND:
- = STONE FD.
  - = IRON PIN/PIPE FD.
  - = POINT-OF-DEPARTURE
  - = 5/8" X 30" RE-BAR
  - = W/PLASTIC I.D. CAP SET
  - = R/R SPIKE SET
  - ▲ = R/R SPIKE FD.

9700010607  
Filed for Record in  
HOLMES COUNTY, OH  
SALLY MILLER  
On 12-19-1997 At 01:07 pm.  
CNTY LG PLT  
Vol. 2 Pg. 283 - 283  
04 282 p. 7

9700010607  
SAMUEL STEINEL ATTY  
MILLERSBURG,

**HEARTLAND Surveying, Inc.**  
Jim Shamp  
5210 T.R. 257 MILLERSBURG, OH 44654  
PH: 330-674-4698

SURVEY		HOLMES CO. RAILS TO TRAILS COALITION		DATE	AUGUST 14, 1997
STATE	OHIO	COUNTY	HOLMES	TWP.	RICHLAND
RNG.		9 W			
TWP.	8 N	SECTIONS	24 & 25	R-T-T	970502.CRD
				R-T-T	970821.PL1

I CERTIFY THIS TO BE A TRUE PLAT OF A FIELD SURVEY COMPLETED ON AUGUST 14, 1997:

*J. Shamp*  
JIM SHAMP, REG. SUR. NO. S-6088



PLAT APPROVED  
12/14/97 Plat "M"