

FINAL PLAT OF RAY-MAR HERITAGE HILLS SUBDIVISION - PHASE I

1/1

BEARINGS ESTABLISHED FROM SUR. PLAT 14/695 AND ARE TO DENOTE ANGULAR MEASUREMENT ONLY.

- LEGEND: Stone FD, Iron Pin/Pipe FD, Point-of-Departure, etc.

CERTIFICATE OF OWNERSHIP AND DEDICATION. We hereby certify that we are the owners of the property shown and described hereon...

Date 23 June 1997. David B. Bird, Thomas K. Bird, etc.

OWNER: RAY-MAR HERITAGE PARTNERSHIP, AN OHIO GENERAL PARTNERSHIP & DAVID B. BIRD & THOMAS K. BIRD

GRADING AND STORMWATER POLLUTION PREVENTION PLAN

- 1. Stabilization of disturbed areas: a disturbed area in which the contractor is no longer actively working shall have vegetative soil stabilization...

CENTER LINES ROAD & UTILITY CURVE DATA

Table with columns: CURVE, RADIUS, TANGENT, LENGTH, DELTA, DEGREE, CHORD, CH-BEARING. Rows A-D.

CENTER LINES ROAD & UTILITY & PROPERTY LINE CURVE DATA

Table with columns: CURVE, RADIUS, TANGENT, LENGTH, DELTA, DEGREE, CHORD, CH-BEARING. Rows E-S.

ROAD R/W & UTILITY EASEMENT CURVE DATA AROUND CUL-DE-SAC

Table with columns: CURVE, RADIUS, TANGENT, LENGTH, DELTA, DEGREE, CHORD, CH-BEARING. Rows M-Q.

also: Sonja H. Bird, Troy Hahn, Robin Hahn, etc.

CERTIFICATION OF THE APPROVAL OF PLAT AND ENGINEERING DETAILS

I hereby certify that I have approved the plat and engineering details of the proposed roads, and other proposed public facilities in the subdivision plat as shown hereon.

Date 6/24/97. Robert L. Karna, P.E.P.S., County Engineer

CERTIFICATE OF APPROVAL FOR RECORDING

I hereby certify that the subdivision plat shown hereon has been found to comply with the Subdivision Regulations for Holmes County, Ohio...

Date 8/6/97. Chris D. Mauer, Holmes County Regional Planning Commission

NOTE: ALL LOTS ARE SUBJECT TO A DECLARATION OF COVENANTS, EASEMENTS AND RESTRICTIONS RECORDED IN DEED VOLUME 219 BEGINNING AT PAGE 338.

MAINTENANCE AGREEMENT: Pursuant to a Declaration of Covenants, Easements and Restrictions recorded in Deed Volume 219 beginning at page 338...

CERTIFICATE OF APPROVAL BY HOLMES SOIL AND WATER CONSERVATION DISTRICT

I hereby certify that I have approved the subdivision plat and/or agreements or provisions for sedimentation and erosion control as stated or shown hereon.

Date 6-23-97. Holmes Soil and Water Conservation District

CERTIFICATE OF THE APPROVAL BY THE COUNTY COMMISSIONERS

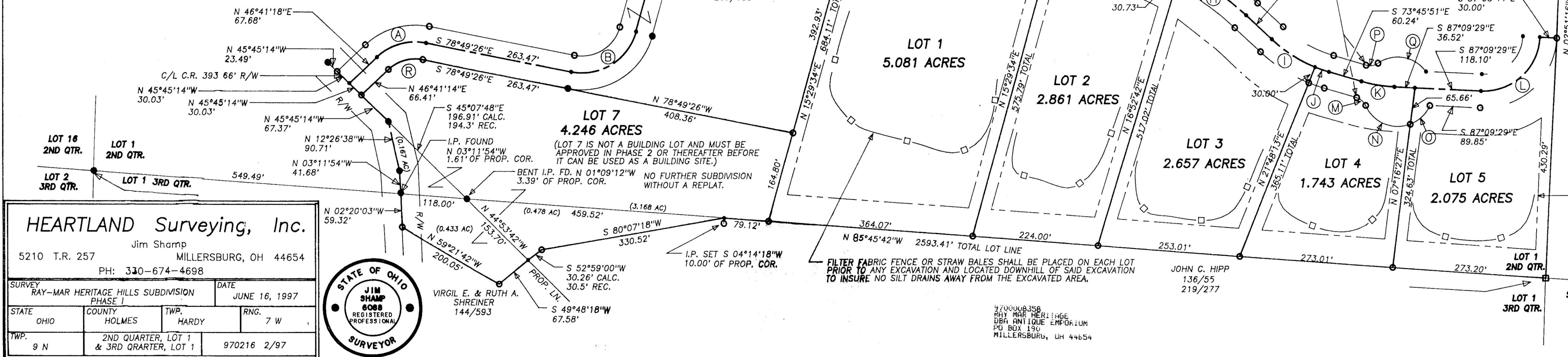
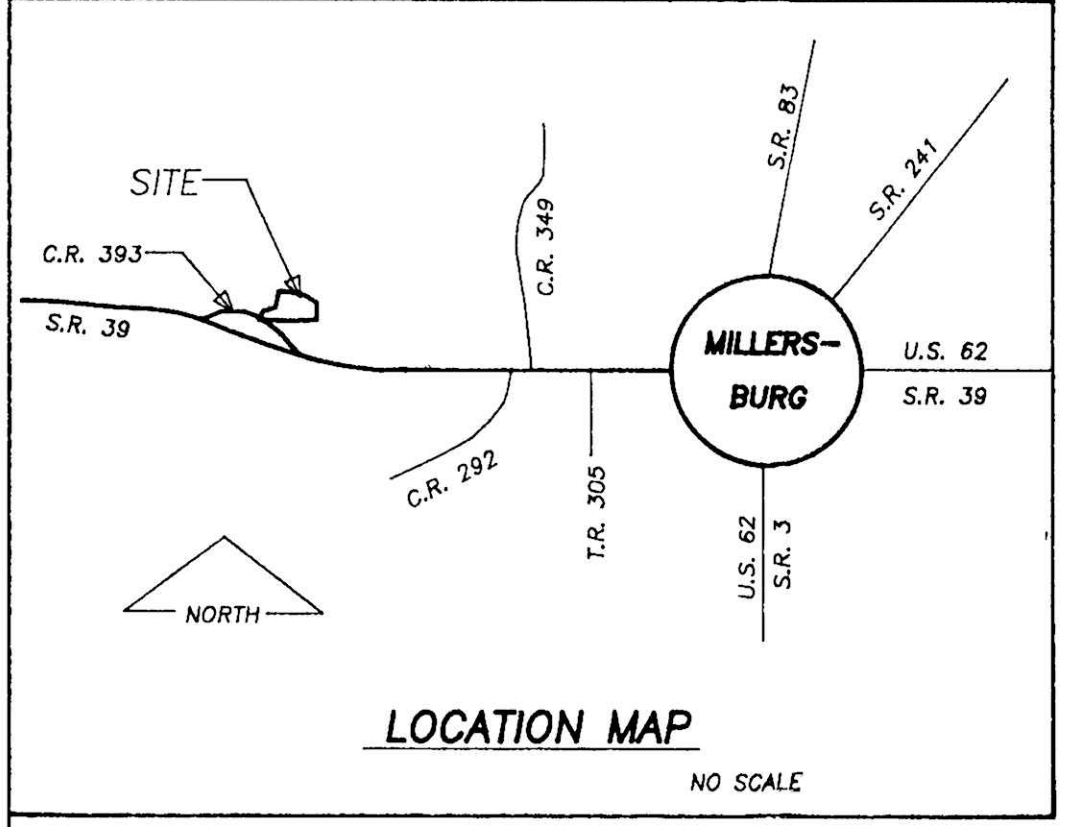
I hereby certify that the Holmes County Commissioners have approved the subdivision plat as shown hereon.

Date 6-26-97. Chairmen, County Commissioners

CERTIFICATE OF ACCURACY

I hereby certify that the plan shown and described hereon is true and correct survey to the accuracy required by the Holmes County Regional Planning Commission...

Date 6-23-97. Jim Shamp, Reg. Sur. No. S-6088



STRAW BALE NOTE: STRAW BALES TO BE PLACED COMPLETELY AROUND CATCH BASINS TO FILTER SILT FROM DRAINAGE WATER...

ACREAGE TABLE with columns: LOT NO., ACREAGE, QUARTER, LOT. Total 56.020 ACRES.

HEARTLAND Surveying, Inc. 5210 T.R. 257 MILLERSBURG, OH 44654. Includes state seal and registration info.