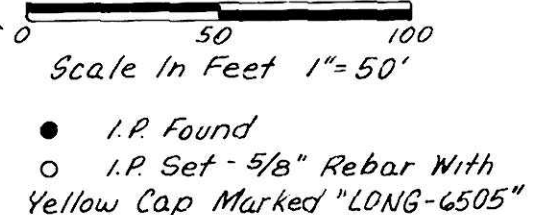
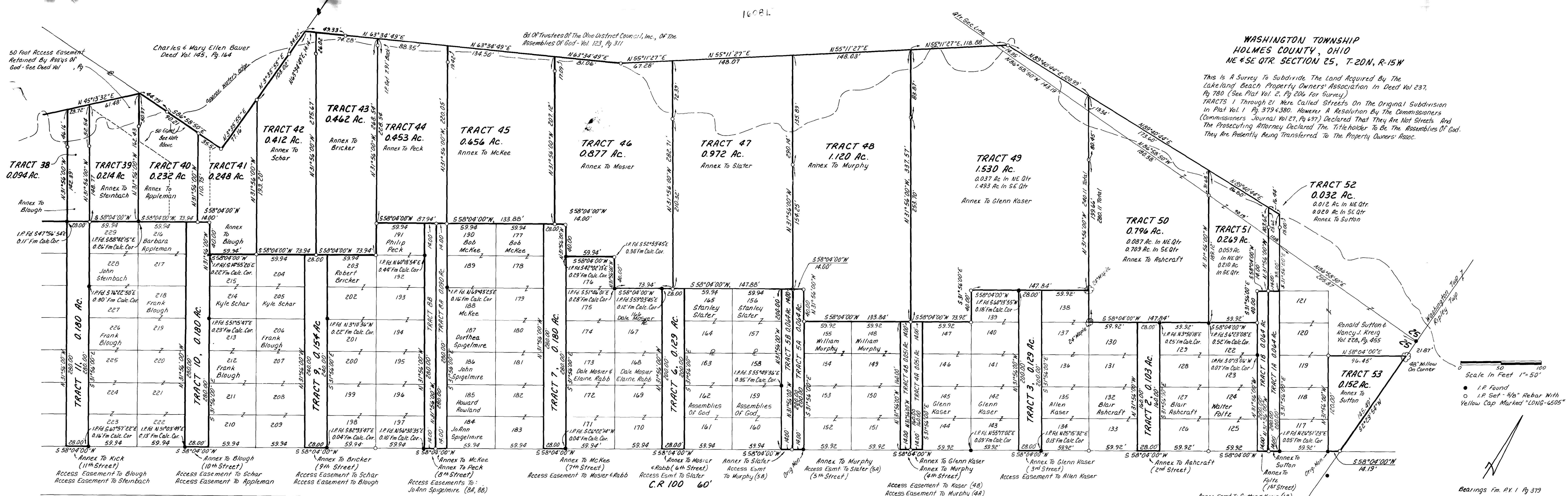
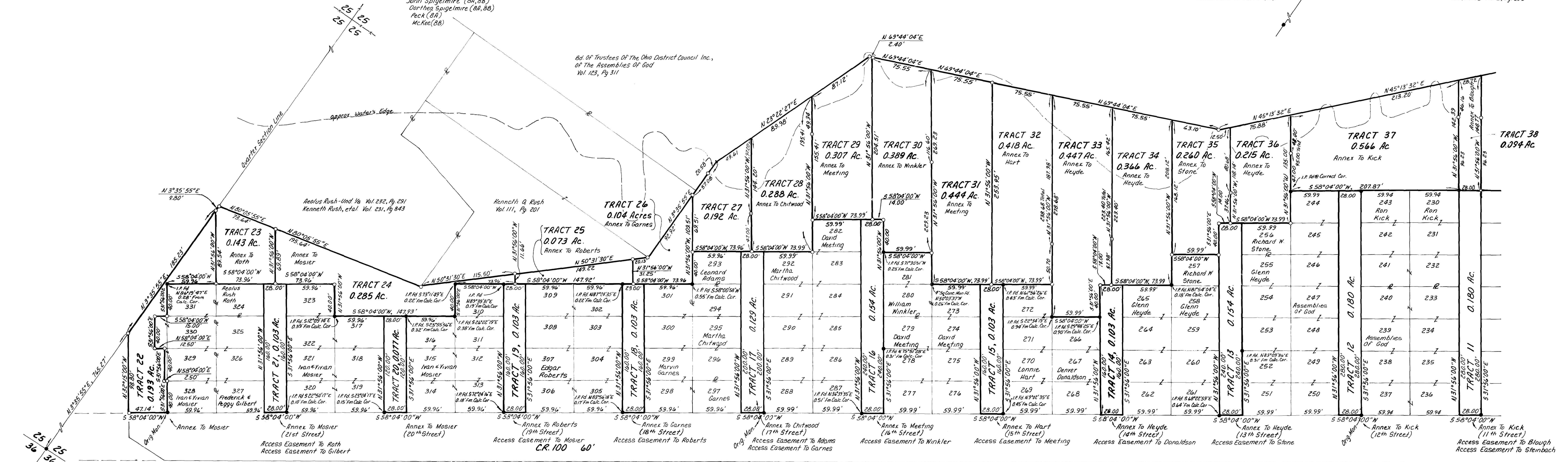


WASHINGTON TOWNSHIP
HOLMES COUNTY, OHIO
NE 1/4 SECTION 25, T-20N, R-15W

This is a Survey To Subdivide The Land Acquired By The
Lakeland Beach Property Owners' Association In Deed Vol 237,
Pg 780 (See Plat Vol 2, Pg 206 For Survey).
TRACTS 1 Through 21 Were Called Streets On The Original Subdivision
In Plat Vol 1, Pg 379-380. However A Resolution By The Commissioners
(Commissioners Journal Vol 27, Pg 697) Declared That They Are Not Streets And
The Prosecuting Attorney Declared The Titleholder To Be The Assemblies Of God.
They Are Presently Being Transferred To The Property Owners' Assoc.



Bearings From P. 1, Pg. 206
Reference P. 2, Pg. 206



NOTES
All Future Transfers Shall Be Subject To The Frontage Access
Easement Requirements Of The Holmes County Subdivision Regulations.

Property Used By More Than One Property Owner Or Lot Owner
For Ingress Or Egress Shall Be Maintained Jointly By The Parties
In Interest

Approved By The Holmes County Planning Commission
By Norman R. Mergante Director Date 8-16-88

Approved For Transfer By Holmes County Health Dept
All Tracts Are Non-Building Sites
By William H. Long Date 8-11-88



I Certify This Survey To Be Correct To The Best Of My Knowledge
William H. Long April 26, 1988

PREPARED BY
LONG SURVEYING, INC.
13301 T.R. 503
BIG PRAIRIE, OHIO 44611