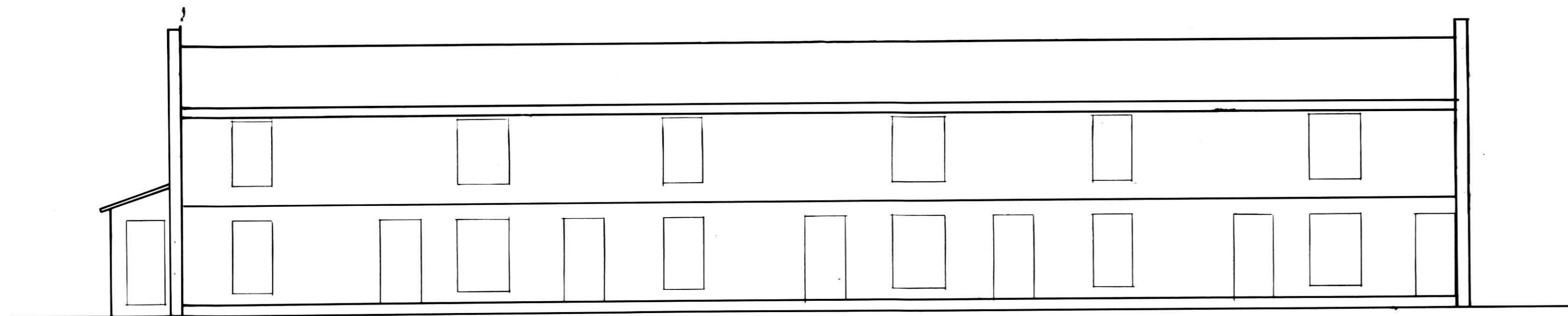
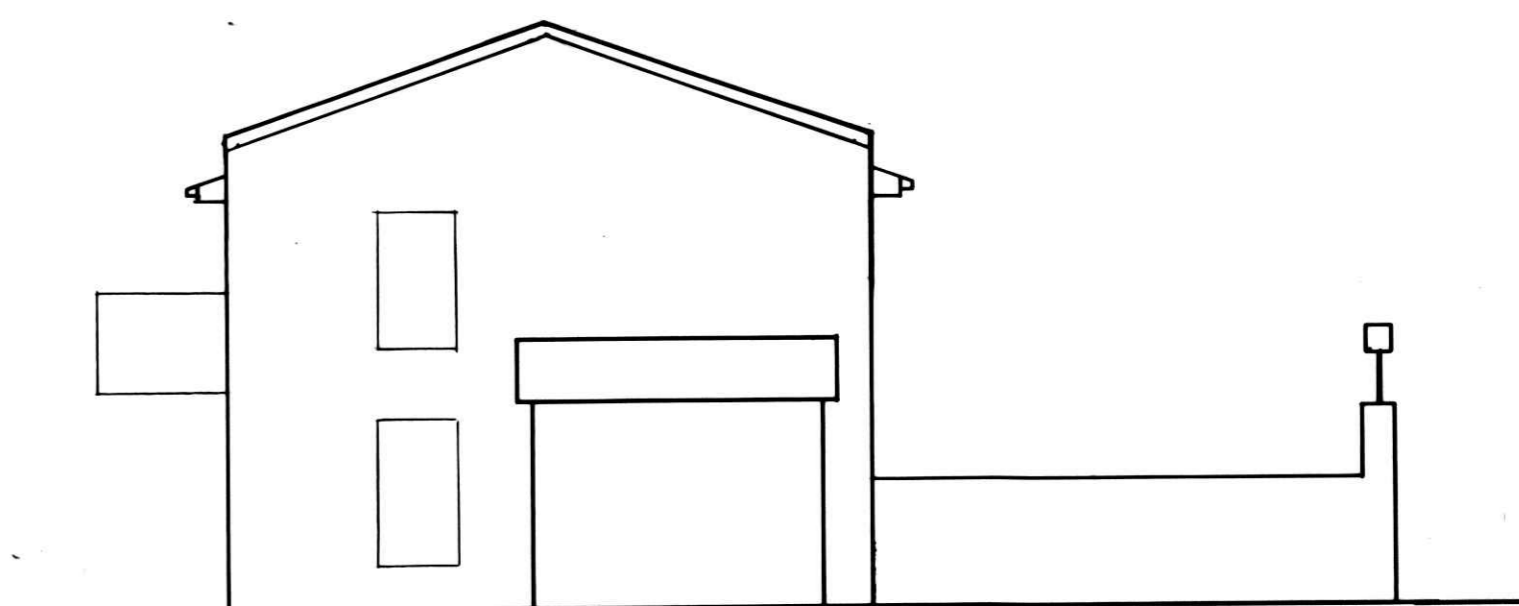


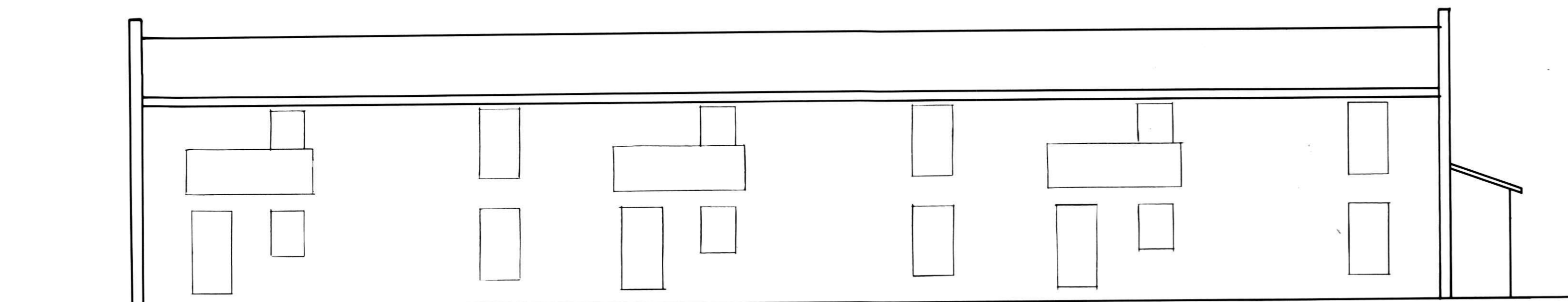
156070



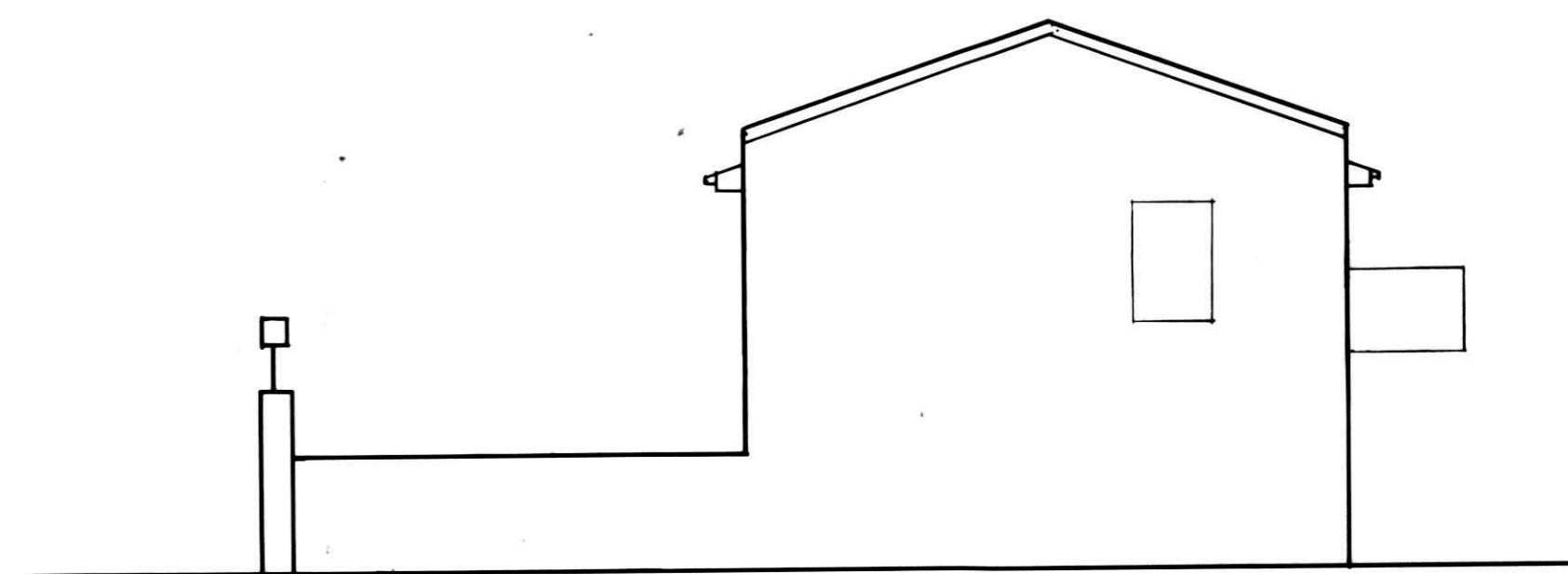
EAST ELEVATION



SOUTH ELEVATION

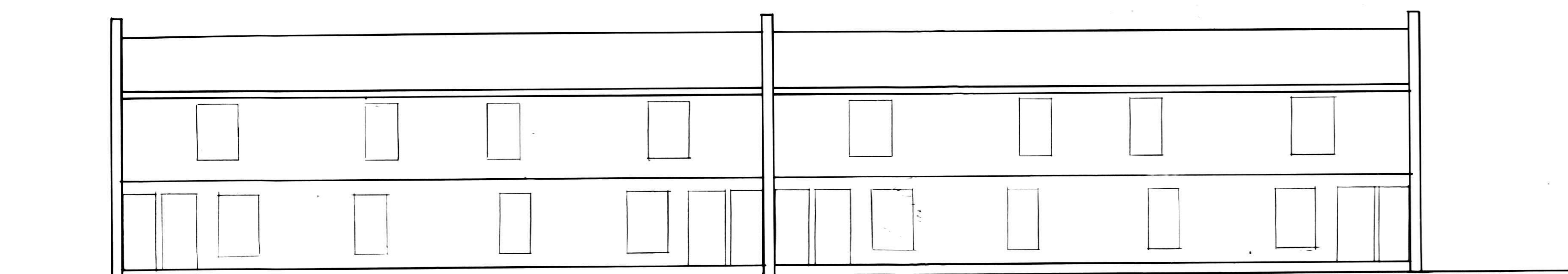


WEST ELEVATION

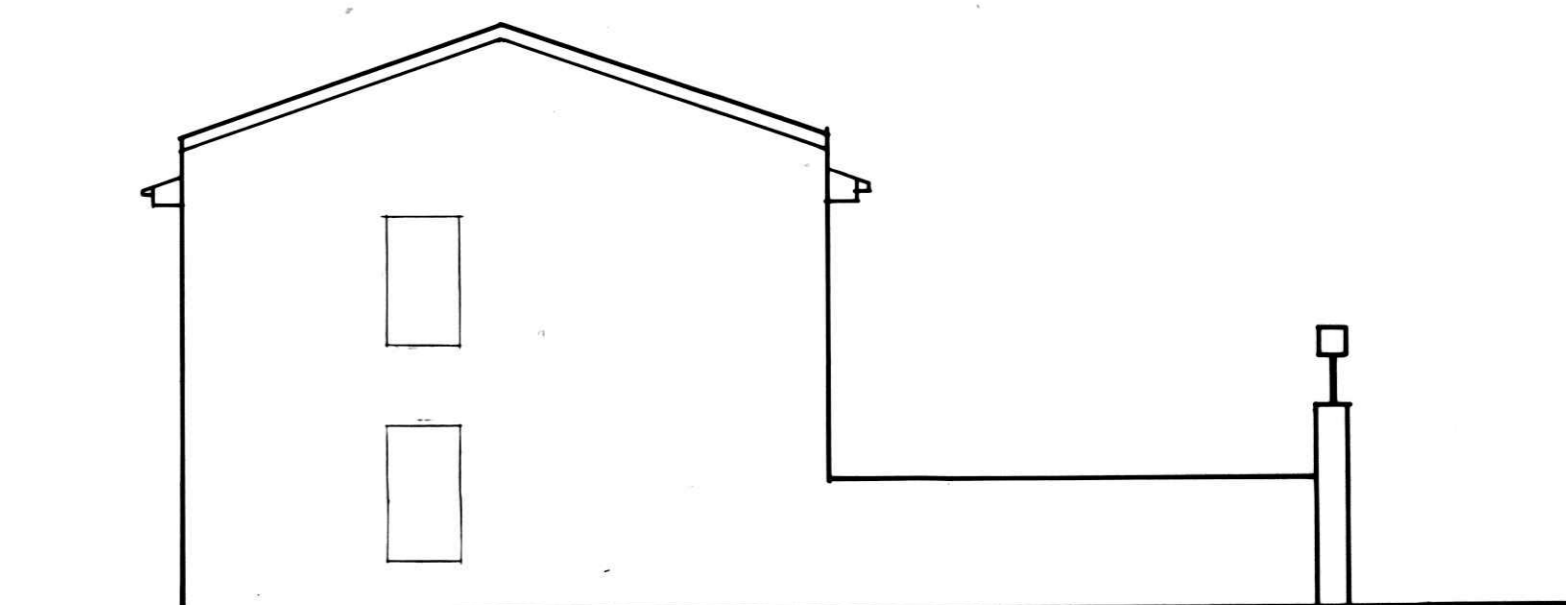


NORTH ELEVATION

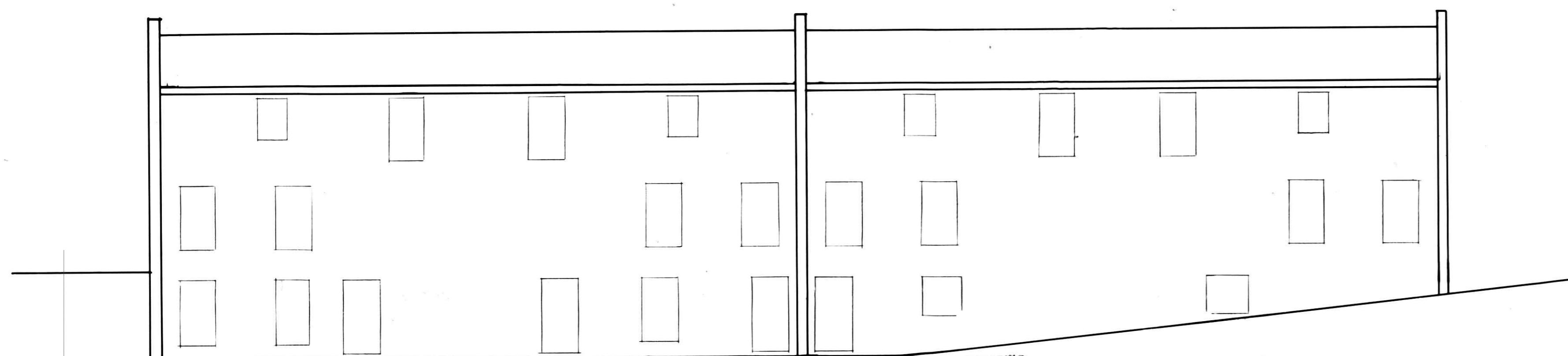
BUILDING A



WEST ELEVATION



NORTH ELEVATION

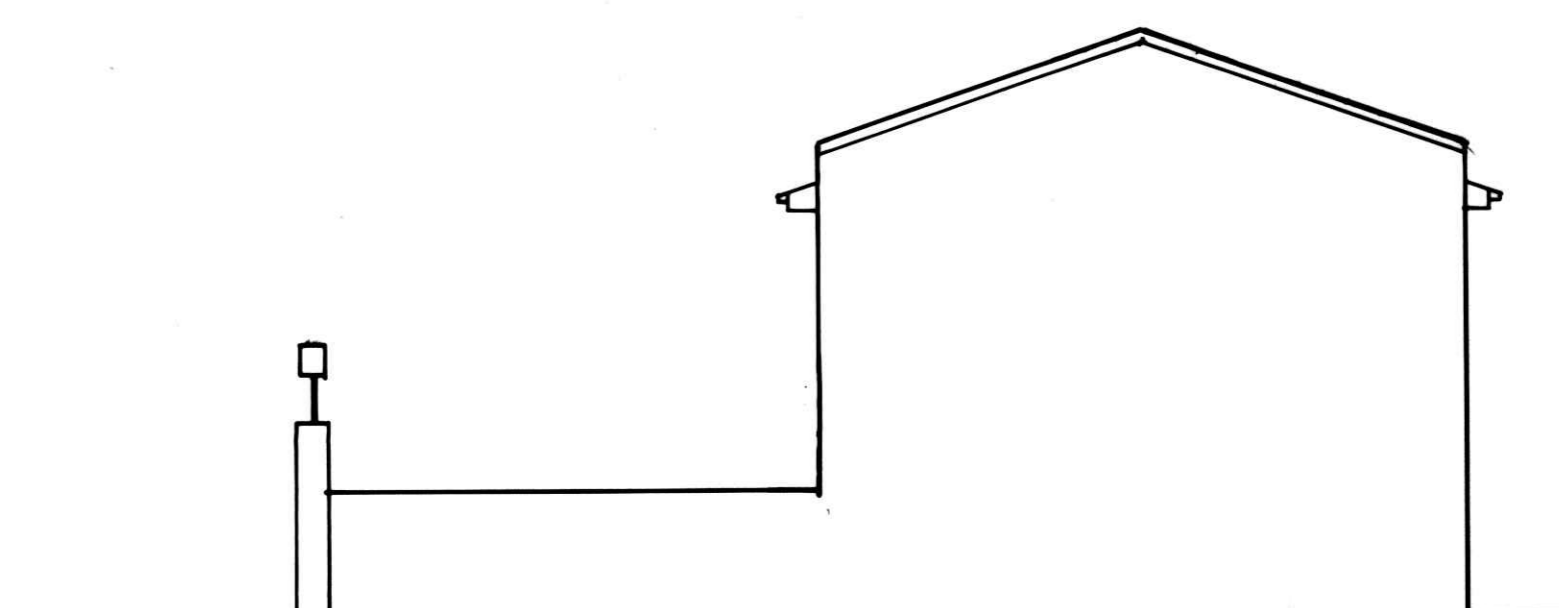


EAST ELEVATION

156070

Rec'd MAY 23 1987 AT 1:52 09 PM  
Recorded May 23 1987 Holmes Co. Ohio Fee 43.20  
Vol. 2 Pg. 202 Recorder Richard A. ...  
24x36x5

BUILDING B



SOUTH ELEVATION

ANY INFORMATION OR DATA ON THIS DRAWING IS NOT INTENDED TO BE SUITABLE FOR REUSE BY ANY PERSON, FIRM OR CORPORATION OR ANY OTHERS ON EXTENSIONS OF THIS PROJECT OR FOR ANY USE ON ANY OTHER PROJECT. ANY REUSE WITHOUT WRITTEN VERIFICATION AND ADAPTATION BY THE ENGINEER, ARCHITECT OR SURVEYOR FOR THE SPECIFIC PURPOSE INTENDED WILL BE AT THE USERS SOLE RISK AND WITHOUT LIABILITY OR LEGAL EXPOSURE TO THE ENGINEER, ARCHITECT OR SURVEYOR.



**POGEMEYER DESIGN GROUP, INC.**  
ENGINEERS ARCHITECTS PLANNERS  
121 E. WOOSTER STREET  
BOWLING GREEN, OHIO 43402

**ADAMS SQUARE CONDOMINIUM**  
HOLMES COUNTY, OHIO

REVISIONS	

EXISTING DRAWN BY	PROPOSED DRAWN BY
CHECKED BY	CHECKED BY
APPROVED BY	APPROVED BY

3  
3  
JOB NUMBER  
8429-003