

PROPOSED ANNEXATION

TO THE VILLAGE OF KILLBUCK

PART OF THE N.W. QTR. SECTION 15, T-8N, R-7W
AND THE N.E. QTR. SECTION 11, T-8N, R-8W
KILLBUCK TWP., HOLMES COUNTY, OHIO

I HEREBY CERTIFY THAT THE HOLMES COUNTY COMMISSIONERS HAVE APPROVED THE DETACHMENT OF THOSE TRACTS OF LAND AS SHOWN HEREON FROM HOLMES COUNTY AT A MEETING HELD ON THE 25 DAY OF August, 1986.

BY Robert Lee
CHAIRMAN, HOLMES COUNTY COMMISSIONERS

I HEREBY CERTIFY THAT THIS PLAT FOR ANNEXATION WAS APPROVED BY THE VILLAGE COUNCIL OF KILLBUCK, OHIO AT A MEETING HELD ON THE 12th DAY OF May, 1986.

BY Dwight B. Felton Jr.
VILLAGE CLERK

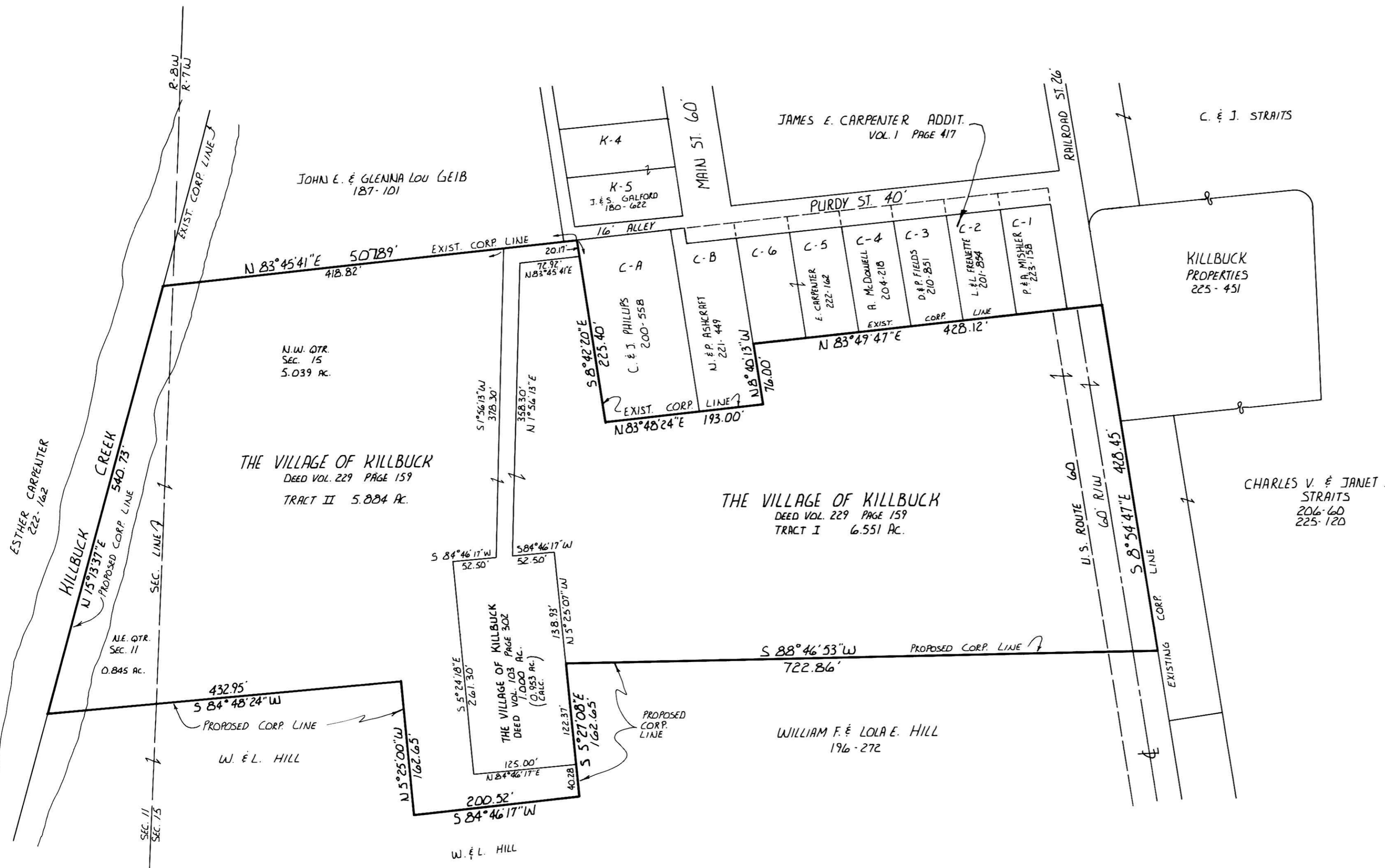
153809

RECEIVED FOR RECORDING THIS 18 DAY OF Nov, 1986
AT 11:00am AND WAS RECORDED IN PLAT BOOK 2
PAGE 191.

BY Richard Brown, Recorder
RECORDER, HOLMES COUNTY, OHIO
Fee: 20.70

12.590 ACRES IN THE N.W. QTR. SEC. 15, T-8N, R-7W
0.845 ACRES IN THE N.E. QTR. SEC. 11, T-8N, R-8W
13.435 TOTAL ACRES TO BE ANNEXED BY DEEDS

(13.388 TOTAL ACRES CALCULATED)



THIS ANNEXATION PLAT PREPARED FROM
VARIOUS DEEDS, MAPS & SURVEYS OF RECORD.
BY: Donald C. Baker
DONALD C. BAKER P.S. 6938
MAY 1, 1986

