

PROPOSED ANNEXATION TO THE VILLAGE OF MILLERSBURG

Known as being a part of the Northeast and Northwest Quarters of Section 22, T-9N; R-9W, Hardy Township, County of Holmes and State of Ohio.



Surveyors Certification

I hereby certify that this Plat was prepared on behalf of the Property Owners from existing surveys and deeds this 23rd day of August, 1984.

By Virgil D. Landis
Virgil D. Landis P.S. #6551

Approved Holmes County Commissioners

I hereby certify that the Holmes County Commissioners have approved the detachment of those tracts of land as shown hereon from Holmes County at a meeting held on the 26th day of Nov., 1984.

By Jack E. Nowels
Chairman, Holmes County Commissioners

Approved Millersburg Planning Commission

I hereby certify that this Plat for Annexation was approved by the Millersburg Planning Commission at a meeting held on the 5th day of Nov., 1984.

By Richard G. Buehler
President, Millersburg Planning Commission

Approved Millersburg Village Council

I hereby certify that this Plat for Annexation was approved by the Village Council of Millersburg, Ohio at a meeting held on the 25th day of February, 1985.

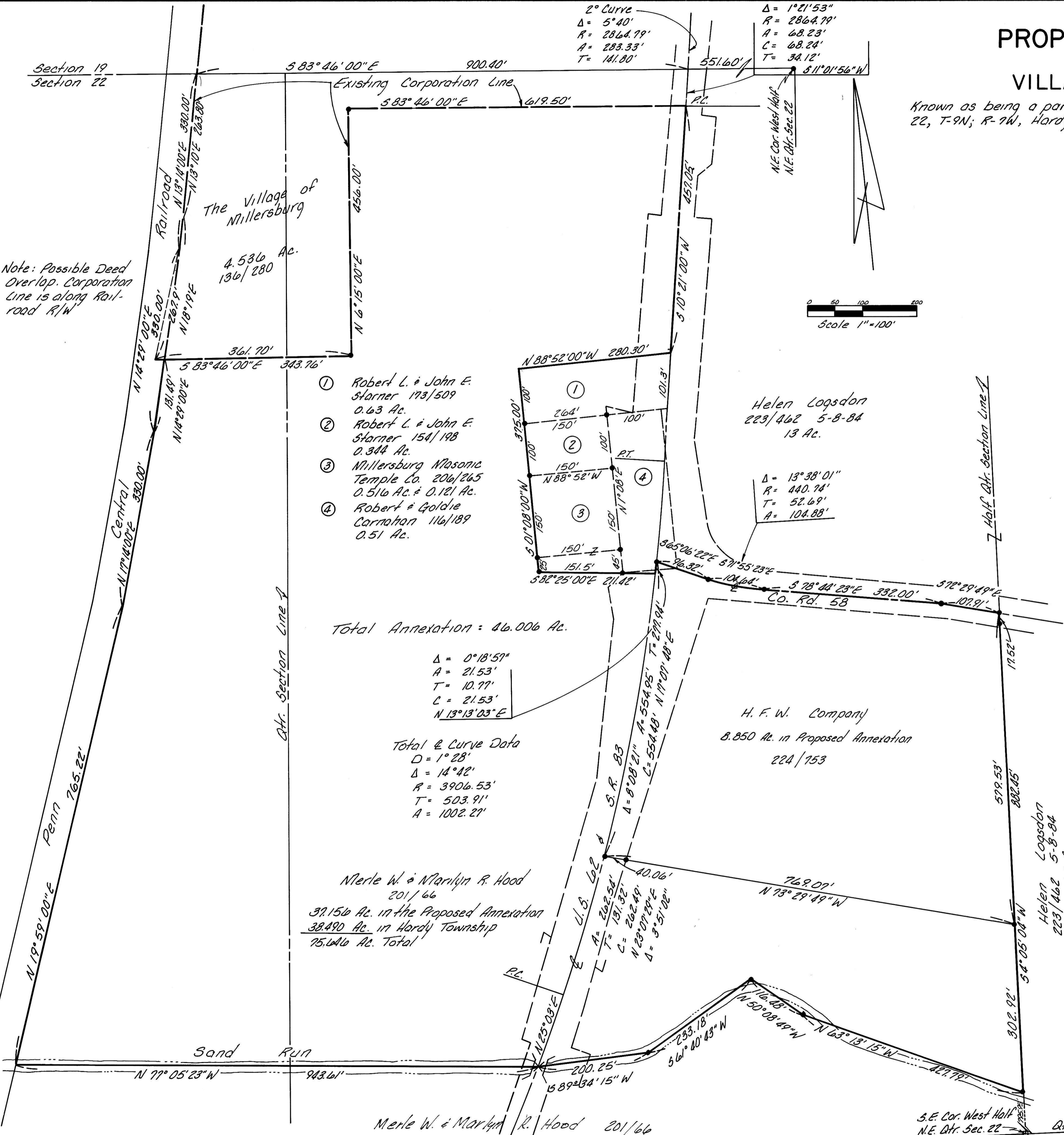
By Paul L. Wheaton
Village Clerk

Recorder

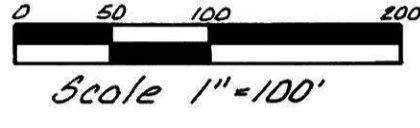
I hereby certify that this Plat was received for record on MARCH 22, 1985 at 1:51 PM and was recorded in Plat Book 2 on Page 185 on MARCH 25, 1985.

By Richard Grauen
Recorder, Holmes Co., Ohio

Fee 30.45



Note: Possible Deed Overlap. Corporation Line is along Railroad R/W



- ① Robert L. & John E. Starner 173/509 0.63 Ac.
- ② Robert L. & John E. Starner 154/198 0.344 Ac.
- ③ Millersburg Masonic Temple Co. 206/265 0.516 Ac. & 0.121 Ac.
- ④ Robert & Goldie Carration 116/189 0.51 Ac.

Total Annexation = 46.006 Ac.

$\Delta = 0^{\circ}18'57''$
 $A = 21.53'$
 $T = 10.77'$
 $C = 21.53'$
 $N 13^{\circ}13'03'' E$

Total Curve Data
 $D = 1^{\circ}28'$
 $\Delta = 14^{\circ}42'$
 $R = 3906.53'$
 $T = 503.91'$
 $A = 1002.21'$

Merle W. & Marilyn R. Hood 201/66
 39.156 Ac. in the Proposed Annexation
 38.490 Ac. in Hardy Township
 75.646 Ac. Total

Merle W. & Marilyn R. Hood 201/66