

SCALE 1" = 200'  
 ○ IRON PINS SET  
 ● IRON PINS FOUND

NE COR SE QR SEC 33  
 PRAIRE TWP T-14 R-13  
 Post

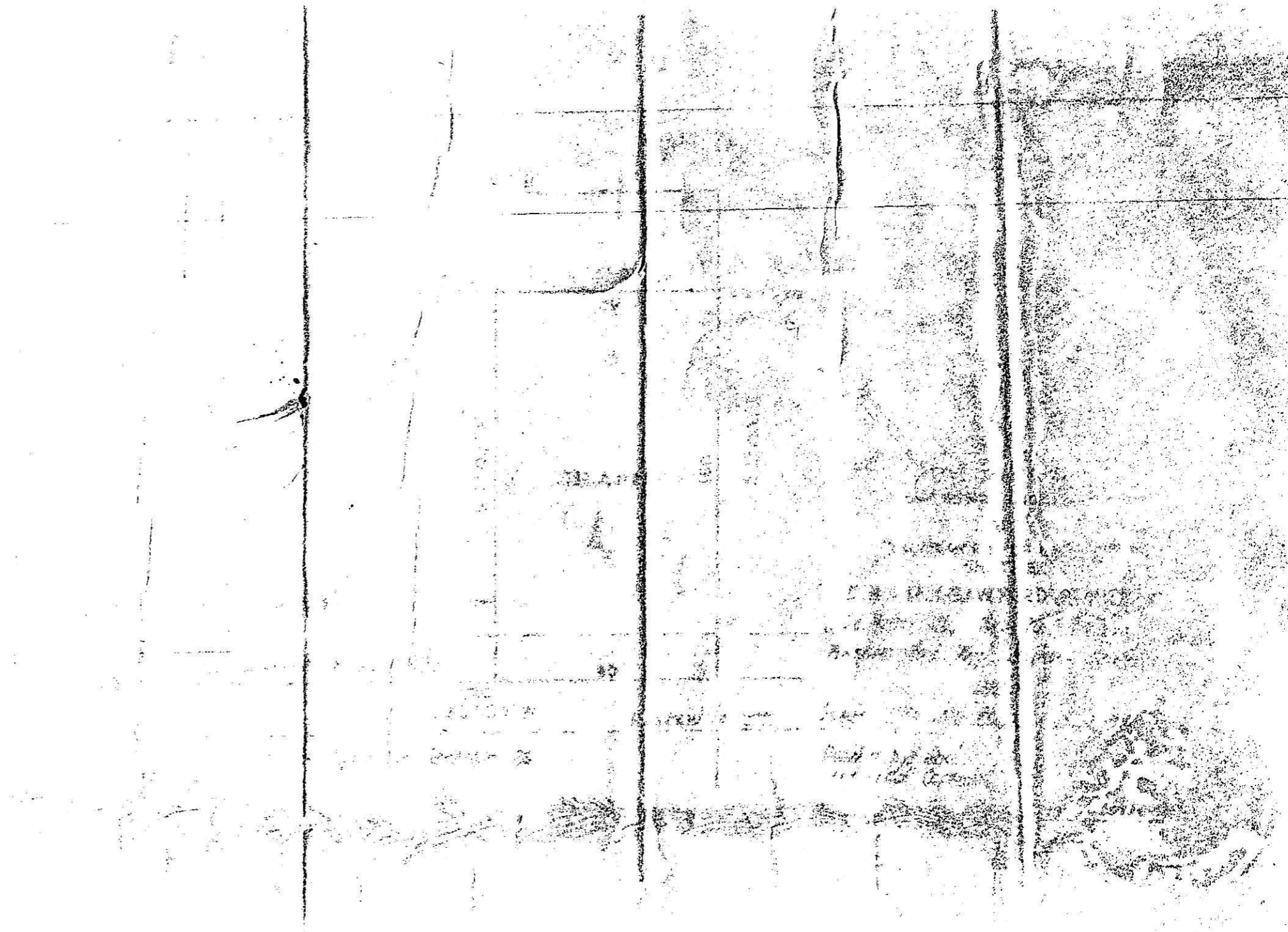
SHAFFER-PARRETT & ASSOCIATES  
 CONSULTING ENGINEERS  
 WOOSTER, OHIO

SURVEY FOR  
 D. V. HOFFMAN  
 PRAIRE TWP  
 SW-C-80

Received September 7<sup>th</sup> 1957  
 At 11:55 o'clock H: M  
 Recorded Sept. 7<sup>th</sup> 1957  
 In Holmes County  
 Record of... Plats  
 Vol. 2 Page 82  
 Evelyn Anderson Recorder  
 Recorder's Fee \$1.30

I HEREBY CERTIFY THIS PLAT TO BE A TRUE  
 RETURN OF FIELD NOTES OF A SURVEY  
 MADE IN THE SE QR SEC 33 PRAIRE TWP  
 HOLMES COUNTY, OHIO MAY 24, 1955.

C. B. Parrett  
 C. B. PARRETT R.S. 22 9/5/55  
 REGISTERED PROFESSIONAL ENGINEER  
 NO. 12345



52854

Received September 7<sup>th</sup> 1957  
 At 11:55 o'clock H: M  
 Recorded Sept. 7<sup>th</sup> 1957  
 In Holmes County  
 Record of... Plats  
 Vol. 2 Page 82  
 Evelyn Anderson Recorder  
 Recorder's Fee \$1.30