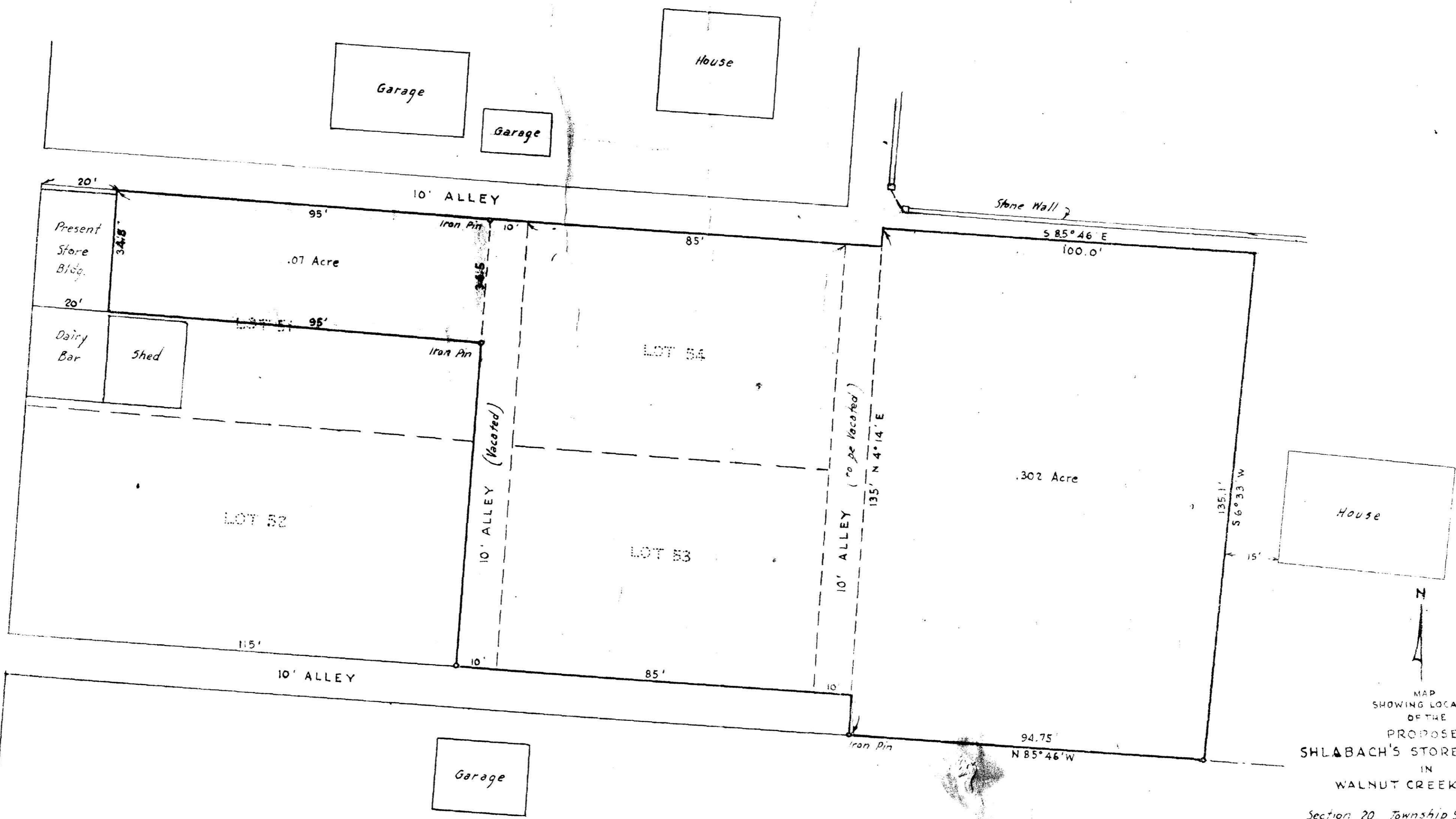


PUMP STREET 66 FT.



S.W. Cor. of the
N.W. Qr. of
Section 20
Center of
Pump St.

58573

REC'D: April 18, 1960
AT 1:00 O'CLOCK P.M.
RECORDED: April 18, 1960
HOLMES COPLOT VOL. 2 PG. 55
FEE: \$ 3.75
Evelyn Anderson, RECORDER



MAP
SHOWING LOCATION
OF THE
PROPOSED
SHLABACH'S STORE PROPERTIES
IN
WALNUT CREEK, OHIO
Section 20, Township 9, Range 5
Walnut Creek Township, Holmes County
Ohio

Scale 1" = 20 ft. April 1960

Drawn by
William Seltner
Reg. Sur. No. 3915