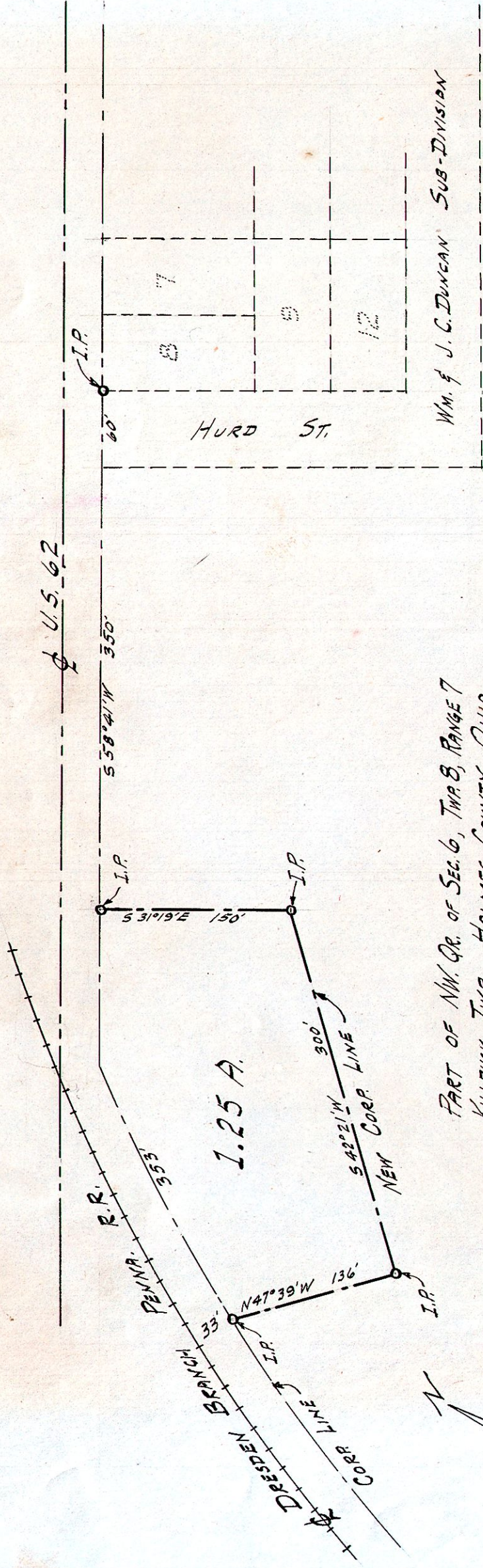


VILLAGE OF KILLBUCK



PART OF NW. QR. OF SEC. 6, TWP. 8, RANGE 7
KILLBUCK TWP., HOLMES COUNTY, OHIO.

SCALE 1" = 100'

PLAT OF ANNEXED TERRITORY

I hereby certify this to be a correct PLAT of the description
made by W. L. REIDENBACH Jan. 17, 1946.

Harold H. Hill
REG. SURVEYOR No. 3170

APPROVED BY THE COMMISSIONERS OF
HOLMES COUNTY, OHIO JUNE 3, 1946.

APPROVED BY THE COUNCIL OF THE VILLAGE
OF KILLBUCK, OHIO JULY 18, 1946.

FOR A MORE COMPLETE DESCRIPTION OF THE ABOVE PLAT SEE MISCELLANEOUS RECORD No. 1, PAGE 175.