

P

FAIRVIEW

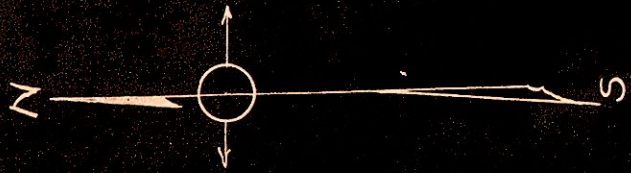
Being a sub-diviss
(Original Out Lot N^o 26) in

By T.J. Sch

CERTIFIC

I hereby certify that this is a
being a sub-divission of part
as surveyed and platted by m

Scale 50' = 1. inch o Iron corners

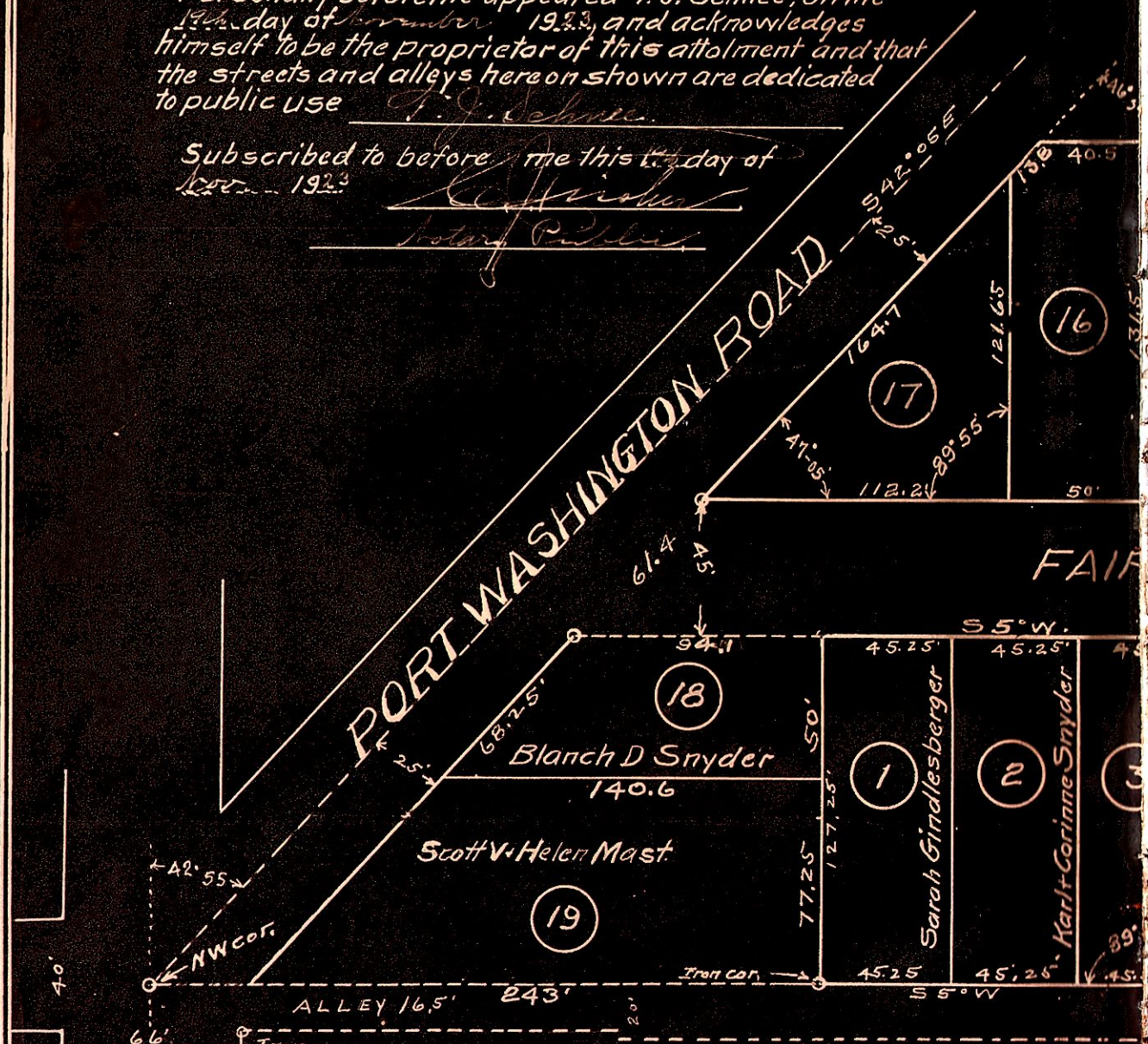


State of Ohio Holmes County SS

Personally before me appeared T.J. Schnee, on the
13th day of November 1923, and acknowledges
himself to be the proprietor of this attolment and that
the streets and alleys hereon shown are dedicated
to public use T.J. Schnee

Subscribed to before me this 13th day of
November 1923

[Signature]
[Signature]



I hereby certify that the lots above shown have been
appraised according to law

[Signature]