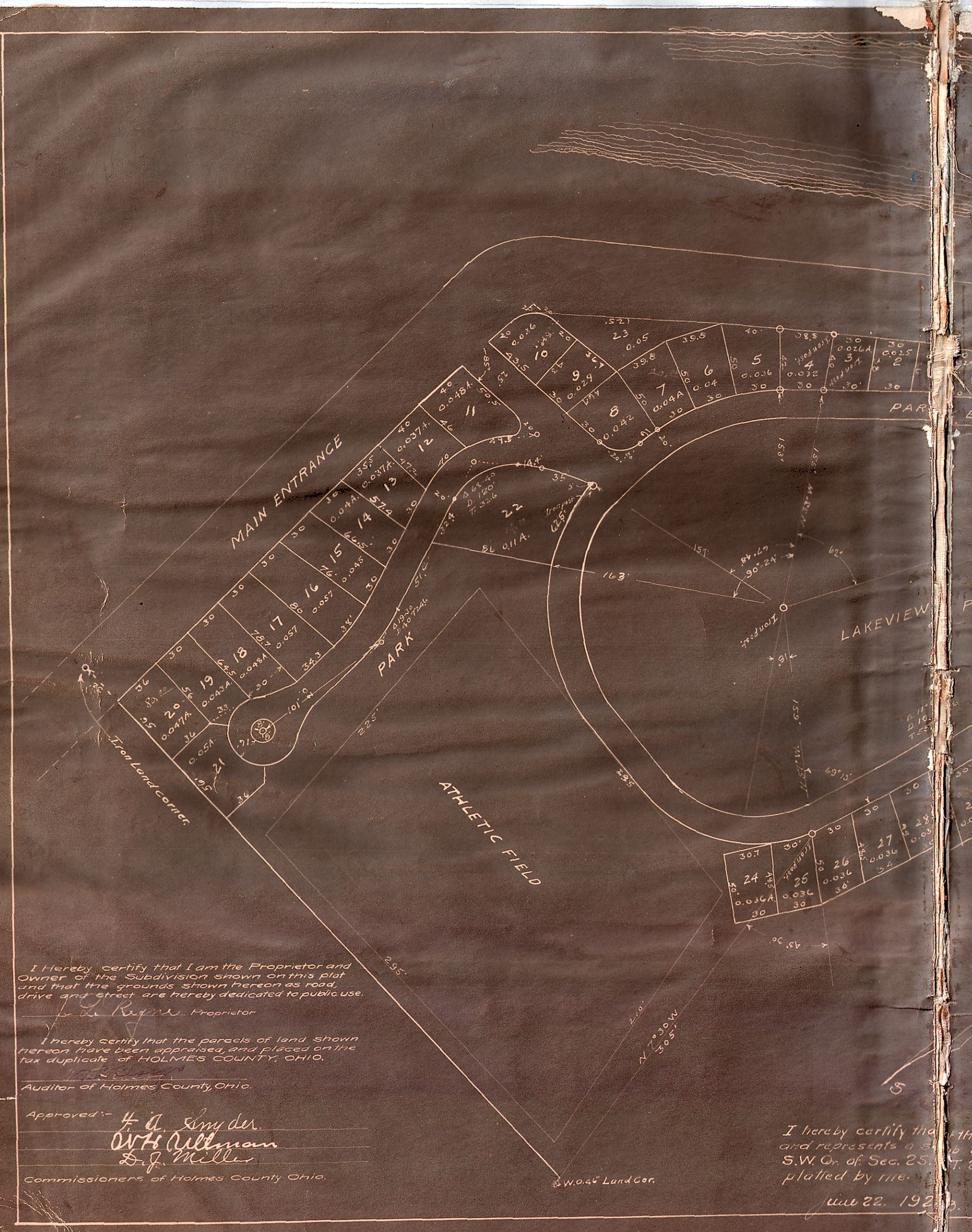


# PLAT OF LAKEVIEW PARK ON LAKE ODELL



I hereby certify that I am the Proprietor and Owner of the Subdivision shown on this plat and that the grounds shown hereon as road, drive and street are hereby dedicated to public use.

*John R. ...* Proprietor

I hereby certify that the parcels of land shown hereon have been appraised, and placed on the tax duplicate of HOLMES COUNTY, OHIO.

*...* Auditor of Holmes County, Ohio.

Approved:-

*H. A. Snyder*  
*W. H. Oellman*  
*D. J. Miller*

Commissioners of Holmes County, Ohio.

I hereby certify that this plat and represents a subdivision of the S.W. 1/4 of Sec. 25, T. 2, R. 2, E. 2, as shown on the map of the same filed in the office of the Auditor of Holmes County, Ohio, and is hereby approved and filed by me.

June 22, 1923