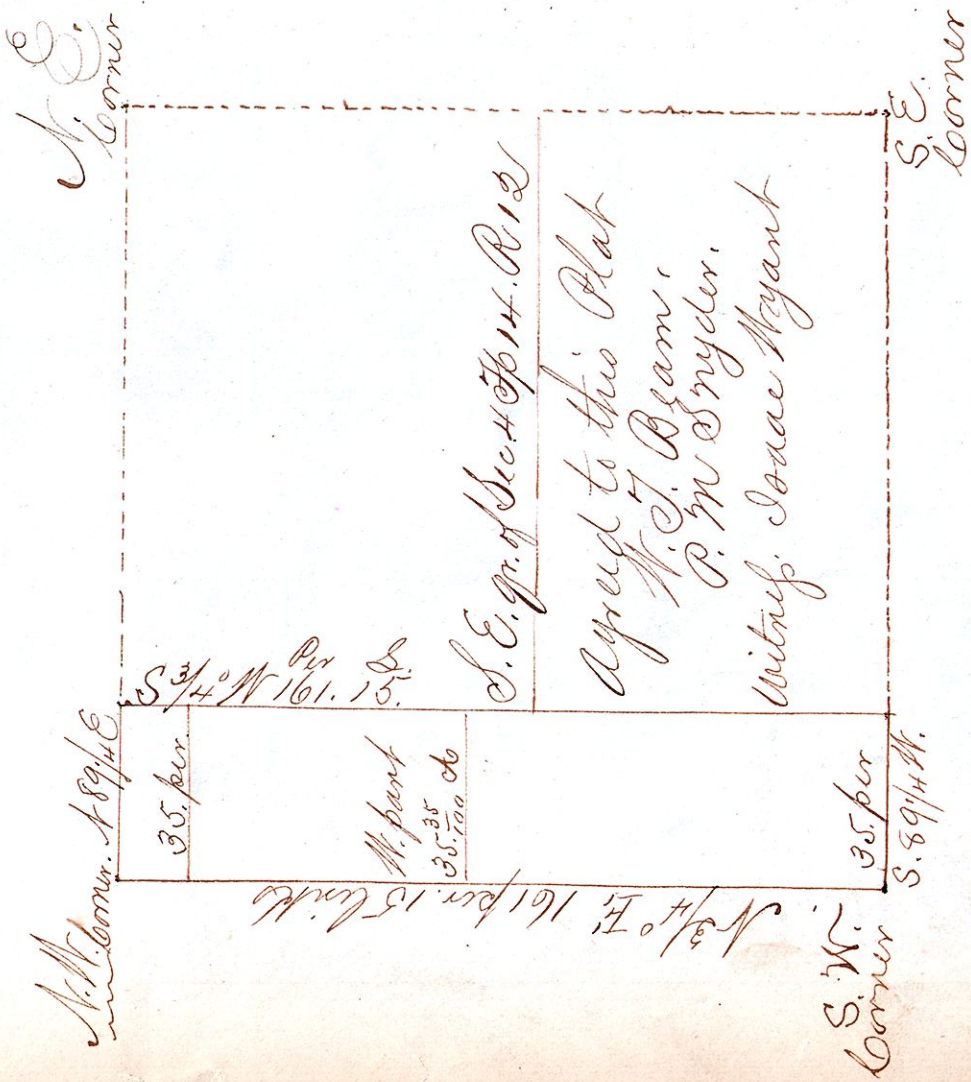


Plat of Lands W. J. Beam & P. M. Snyder

130
130



I do hereby certify that the above is a correct plat of the west part of the South east quarter of section 4 in Township 14 of Range 12 in Holmes County Ohio Aug. 21, 1841 Samuel Robinson Surveyor

Received for Record May 13, 1842

Recorded June 27, 1842

Wm. C. McDonald Recorder