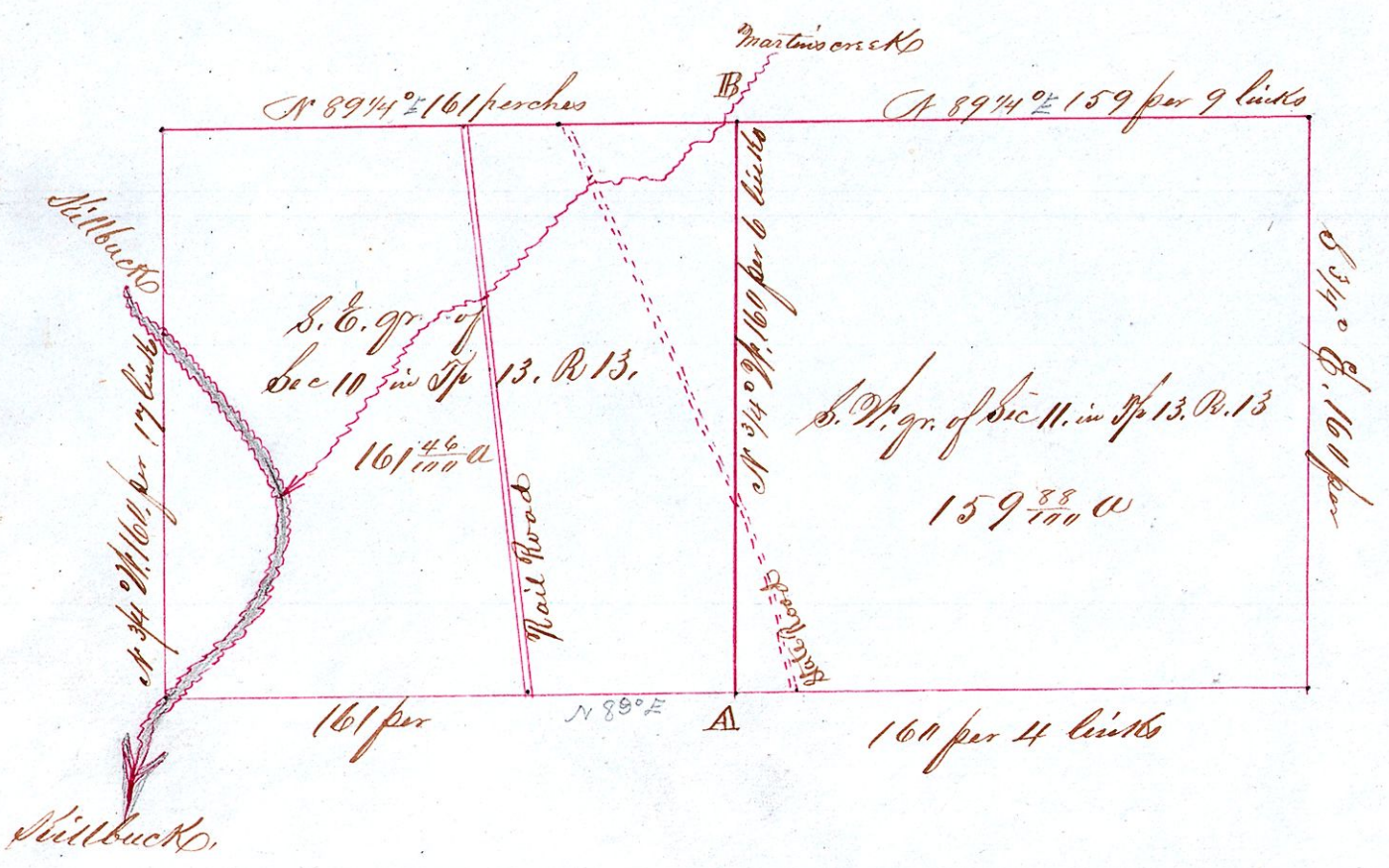


Plat of Lands of County Infirmary, January 9th 1866



From A, West, to center of Rail Road 58 perches,
 From B, West, to center of Rail Road 77 perches,

I do hereby certify that the above is a correct plat of the South East quarter of Section 10,
 and the South West Quarter of Section 11 in Tp 13. of Range 13. Holmes County Ohio
 January 9th 1866.
 Samuel Robinson, Surveyor

Received January 11th 1866, and Recorded 20th of same month and year, J. S. Cook, Recorder