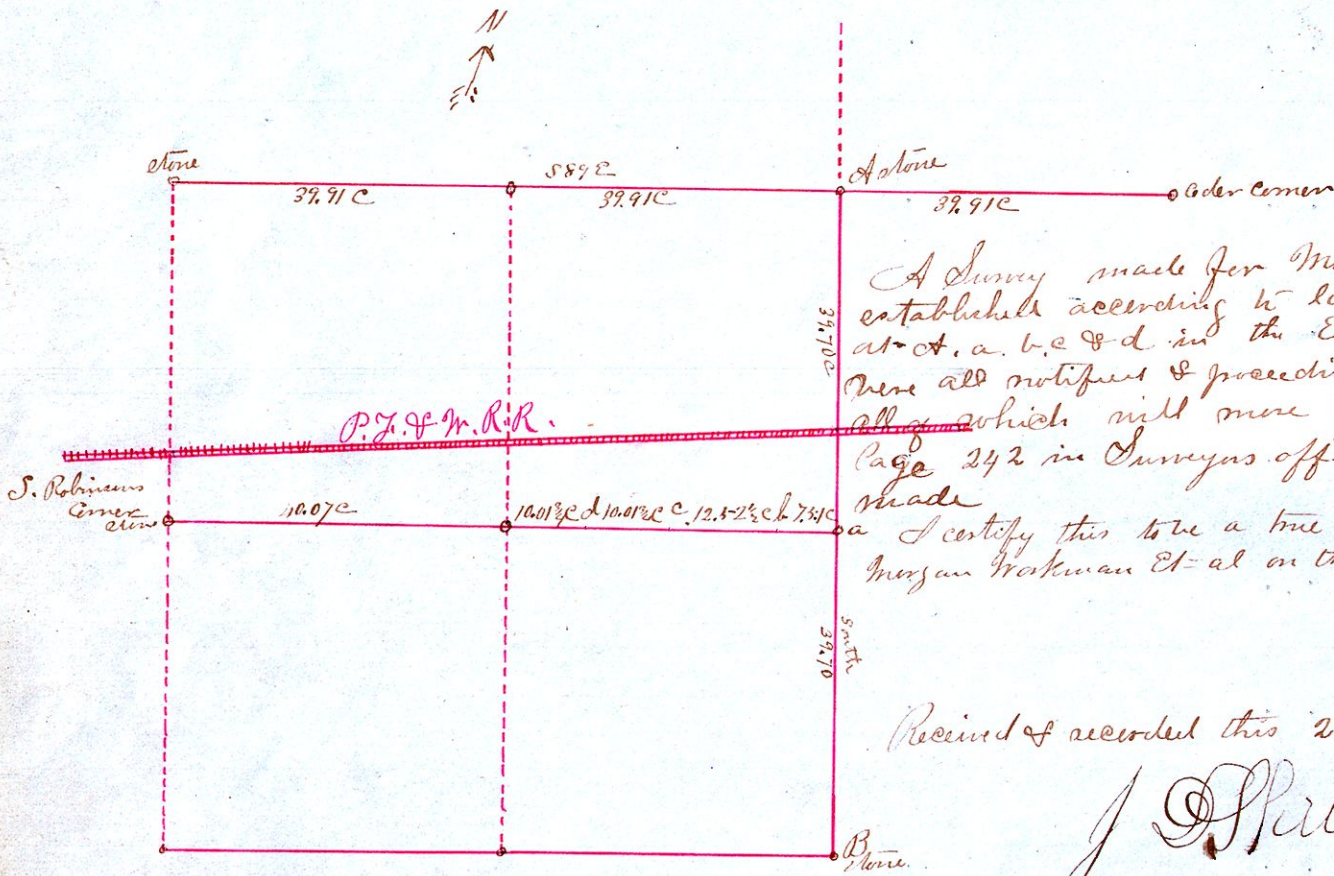


#74

Morgan Workman et al

Sec 32. T20 R15



A Survey made for Morgan Workman ^{et al} and comes established according to law - With glass instruments at *a, b, c & d* in the E 1/2 Sec 32 T20 R15 - parties were all notified & proceeding had according to law all of which will more fully appear on Book 172 Page 242 in Surveyors office to which reference is here made

I certify this to be a true plat of the survey made for Morgan Workman Et al on the 23rd day of May A.D. 1878
 J. Galhoun
 County Surveyor

Received & recorded this 28th day of May A.D. 1878

J. D. Kumpfle
 Recorder