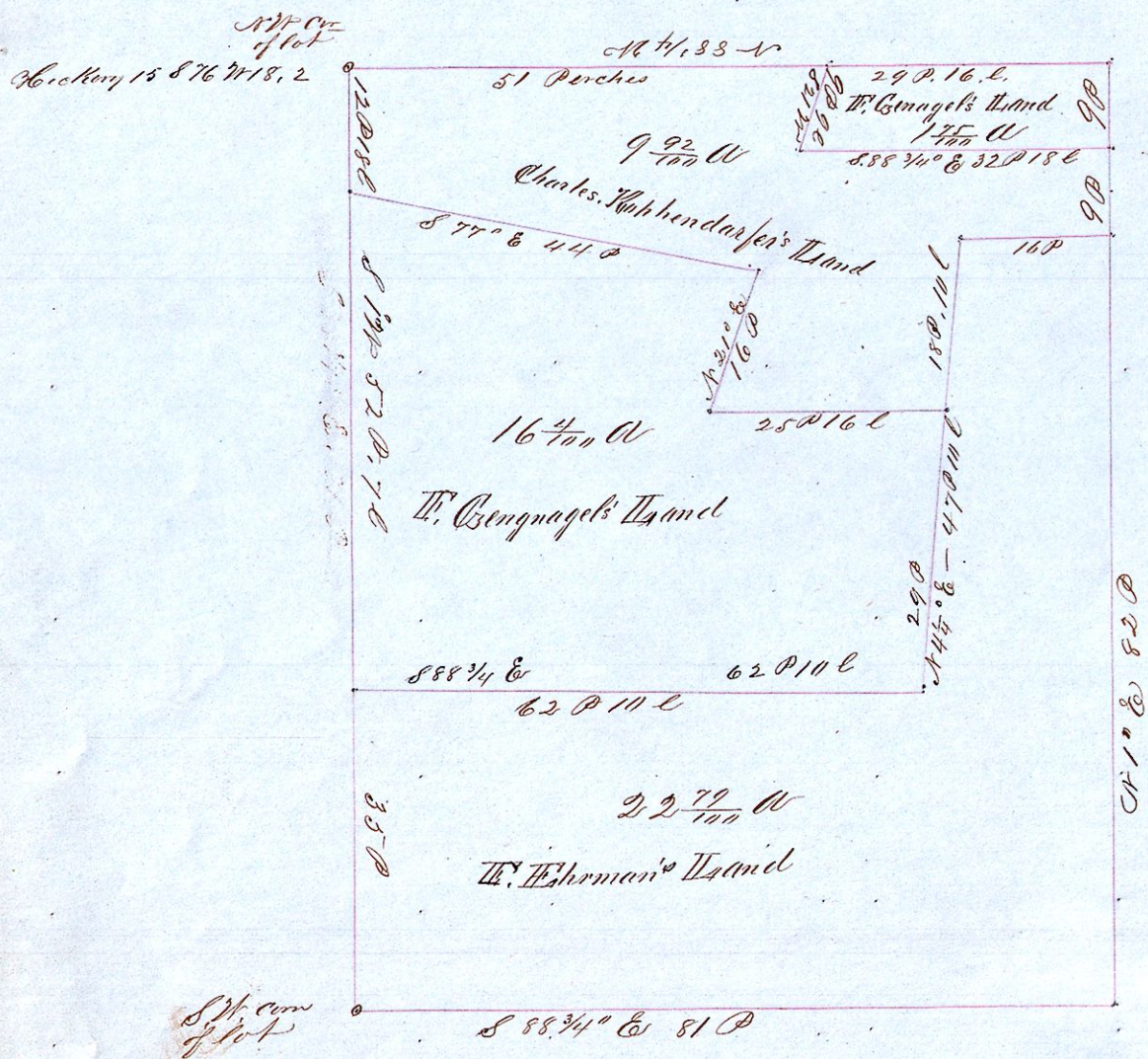


# Gengnagels, Kophendorfer and Ehrman's Land



I do hereby certify that the above is a correct plat of the West half of Military lot number 25, 310, R 4, 3<sup>d</sup> Q. Samuel Robison, Surveyor  
April 6 3 1858

Recorded May 22 1861.  
A. J. Bell Recorder Adams County

See deed Record 24, Page 468  
Gengnagel's Island