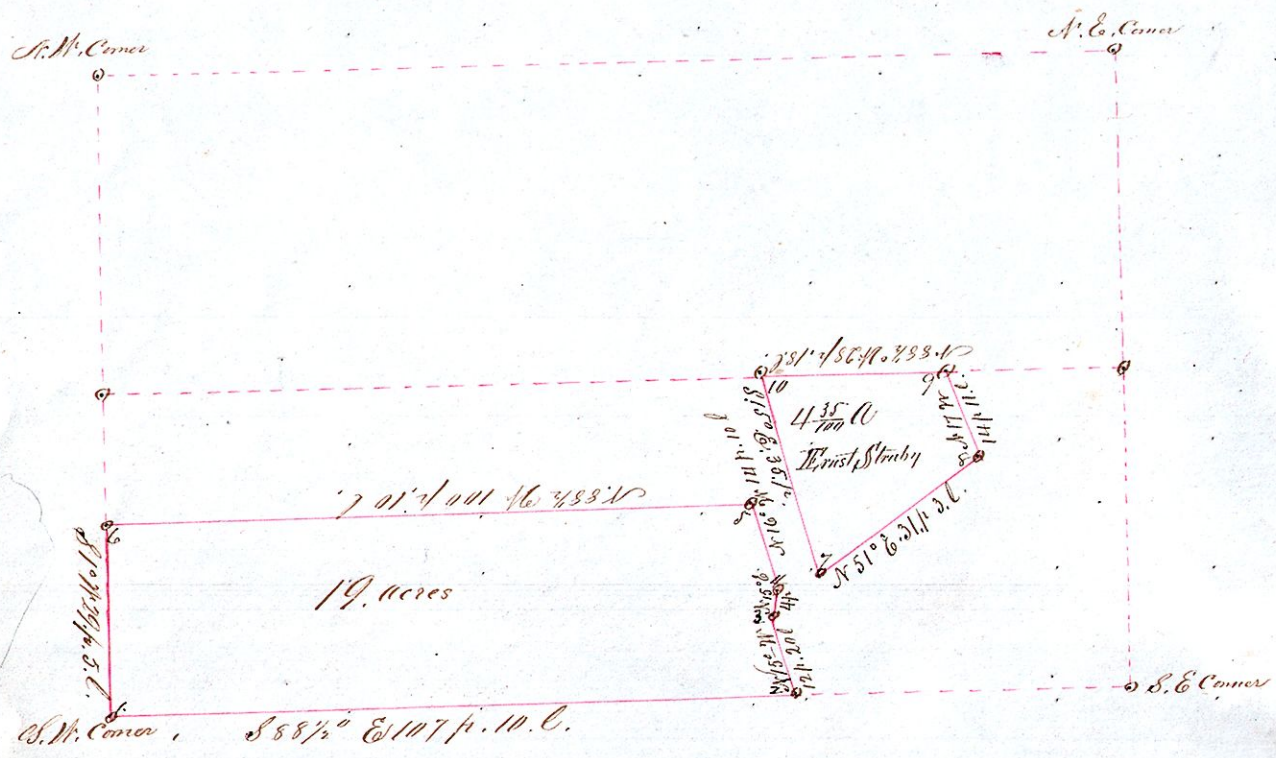


Ernest Struby's Land, Jan'y 26th 1861. See Recd Record Vol 24, Pages 415 & 416



From Station 11 to 7 S. 65° E. 6 ft. 17 links

The above represents certain parts of the South half of Lot No 12, in the 4th & 5th Sp. 10. R. 5.
Surveyed for Ernest Struby, according to corners heretofore made and fenced to, April 20th 1859
Samuel Robison, Surveyor

Received for record January 31st 1861 and recorded January 26th 1861.
A. J. Bell Recorder
Holmes County Ohio