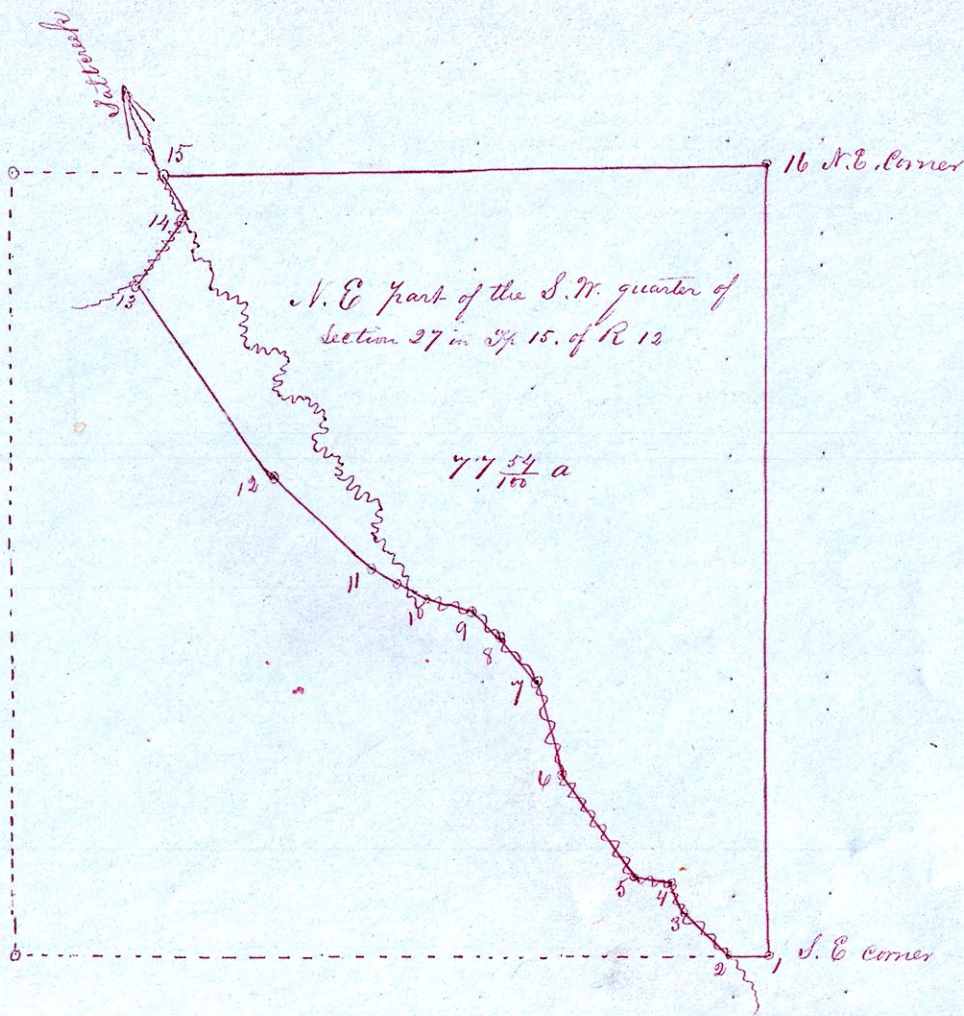


# Isaac Miller's Land

Field Notes Commencing  
at the S.E. Corner of sec

Station	Bearing	Dist	Remarks
1	S 89 1/2° W	2.15	
2	N 45 1/2° W	3.25	
3	N 21 1/2° W	1.57	
4	N 83 1/2° W	2.06	
5	N 33 1/2° W	6.50	
6	N 15° W	5.10	
7	N 41 1/2° W	3.00	
8	N 48° W	1.83	
9	N 72° W	2.30	
10	N 60 3/4° W	3.20	
11	N 47° W	7.00	
12	N 35 1/2° W	12.22	
13	N 35° E	4.00	
14	N 22° W	2.30	
15	N 89 1/2° E	31.25	
16	S 74° E	40.28	to the place of Beginning containing 77 54/100 Acres



Scale 10 chains to the inch

I do hereby certify that the above is a correct plat and notes of the north East part of the South West Quarter of Section 27 in T. 15. of R. 12 Holmes County Ohio

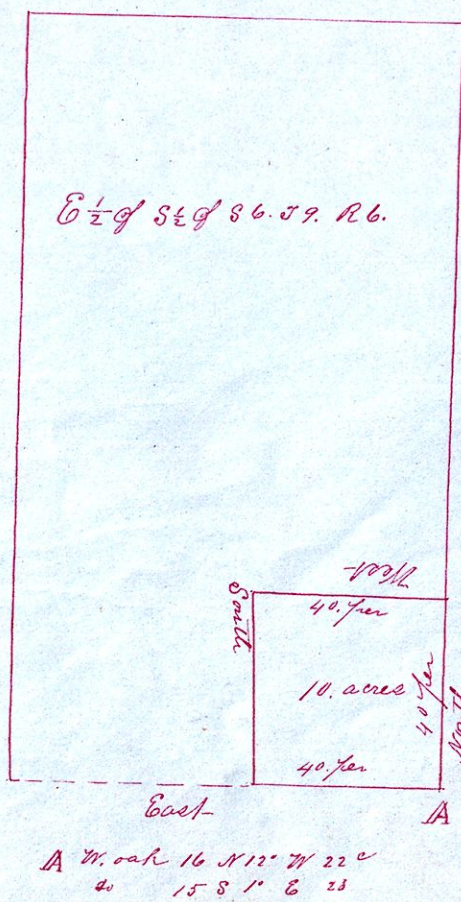
June 26<sup>th</sup> AD 1855

Samuel Robinson Surveyor

Presented for record August 29<sup>th</sup> AD 1856 and Recorded on the 3<sup>rd</sup> day of Sept Same year.

J. B. Raiff Recorder

George Roda's Land. March 3<sup>rd</sup> AD 1857



Presented and Plated in my office March 3<sup>rd</sup> AD 1857

J. B. Raiff Recorder