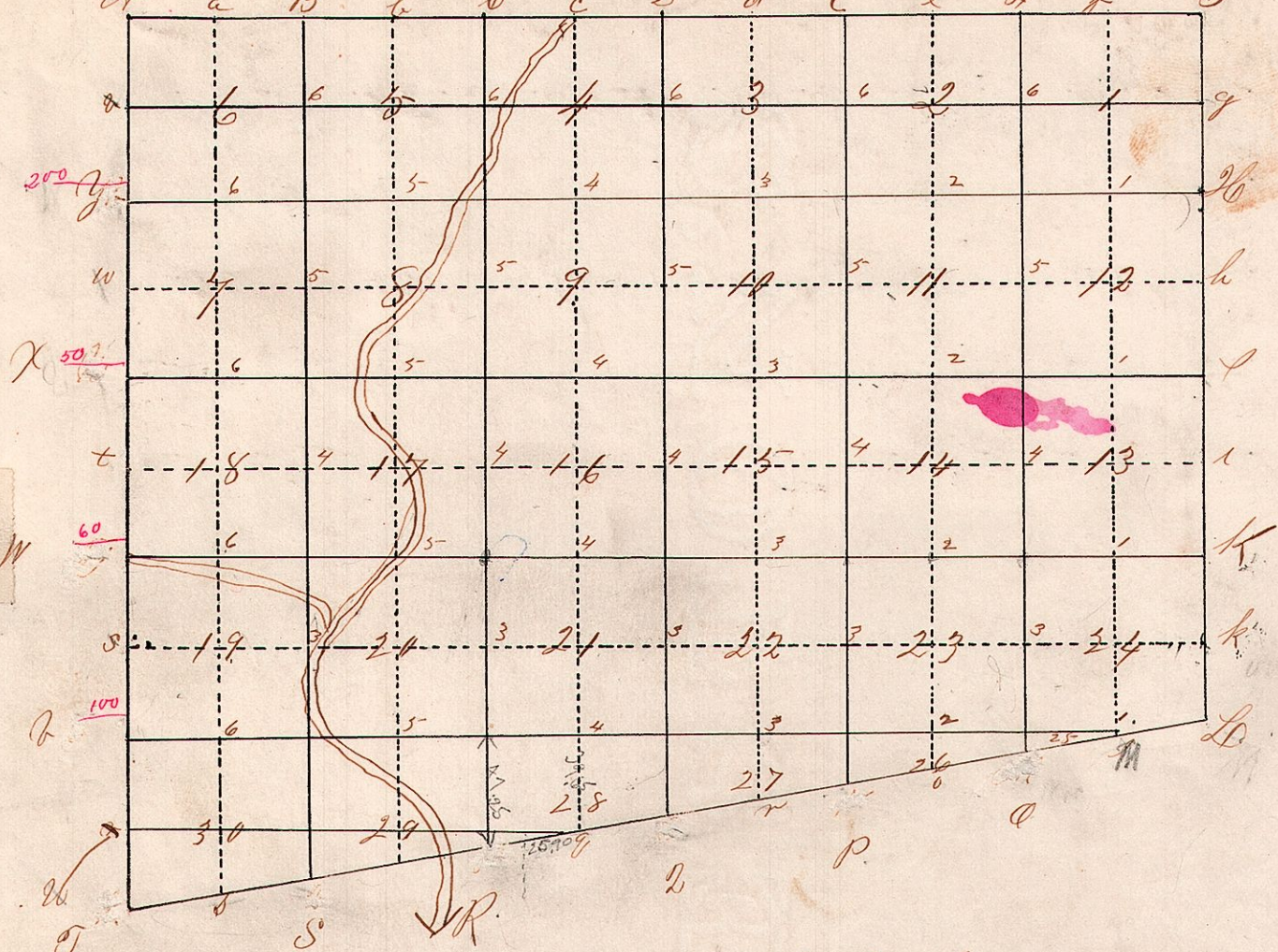


Township 19 Range 15



Path	Bearing	Dist	Comm	Link	Path	Bearing	Dist	Comm	Link	
A	W Oak	14	S17W	43	22, 23, 24, 27	W Oak	14	S16W	21	
"	do	34	S36W	117	do	16	N21E	27	to R at 3 small be	
a	Hickory	9	corner	21, 22, 27, 28	Hickory	18	S33E	21	do	
B	W Oak	16	S34W	19	do	20	S88W	38	do	
do	do	18	West	24, 20, 21, 22, 29	W Oak	10	S16W	11	do	
do	do	16	N25W	74	do	20	N57E	27	do	
do	do	12	S64E	38	17, 20, 29, 30	do	10	N20E	14	do
do	do	10	S81W	25	do	12	S23W	12	do	
C	W Oak	32	N57W	35	Quarter Section	do	2	do	15	S16E
do	do	12	N57E	6	to R at 6	do	10	N71W	14	do
D	W Oak	9	North	33	do	12	N23W	17	do	
do	do	20	S40E	22	to R at 1	W Oak	36	N11E	38	do
d	do	36	N20E	18	to R at 1	Hickory	4	S9W	65	do
do	Cherry	8	S76E	11	do	10	S61E	32	do	
E	B Oak	9	N39W	68	to R at 15	do	4	N61W	43	do
do	do	10	S33E	22	to R at 6	W Oak	18	S19W	12	do
e	W Oak	20	N20W	16	do	14	N37E	16	do	
do	do	16	S44E	32	to R at 6	do	12	N16E	11	do
F	B Oak	7	S52E	38	to R at 6	do	18	S41W	11	do
do	do	5	S7W	28	do	22	N18E	8	do	
f	W Oak	14	N57W	57	to R at 6	W Oak	18	S41W	17	do
do	do	24	N77E	18	do	12	N5E	21	do	
g	W Oak	8	S21W	133	to R at 5	W Oak	10	S11W	17	do
do	Cherry	14	S32W	216	do	14	N16E	99	do	
g	B Oak	18	N68E	19	to R at 4	do	6	S47W	9	do
do	do	10	S92W	11	do	6	N57E	16	do	
h	W Oak	40	corner	do	3	do	13	N16E	33	do
h	B Oak	13	N45W	21	do	8	S27W	16	do	
do	Cherry	14	N83E	6	do	10	S33W	16	do	
J	W Oak	26	N30W	20	do	24	N13E	21	do	
do	do	26	S2W	14	do	12	S9E	30	do	
do	do	22	Corner	do	7	S36W	14	do		
K	Hickory	12	S76W	33	do	7	S36W	14	do	
do	do	9	South	7	do	18	N16E	17	do	
K	W Oak	20	S68W	7	do	4	S20W	7	do	
L	do	36	East	7	do	20	N30E	10	do	
M	do	as corner	do	do	12	S11W	16	do		
N	do	no path or bearing trees	do	do	7	S17W	21	do		
O	do	no path or bearing trees	do	do	10	N17E	6	do		
P	do	no path or bearing trees	do	do	30	N57W	38	do		
Q	do	no path or bearing trees	do	do	10	N8E	8	do		
R	B Oak	17	N59W	41	do	14	N56E	12	do	
"	W Oak	30	S41E	25	do	24	S70W	10	do	
1, 2, 11, 12	W Oak	96	N45E	39	do	6	S71W	18	do	
do	do	6	N73W	34	do	12	N18E	17	do	
23, 14, 11	W Oak	10	S20E	30	do	12	S21E	18	do	
do	B Oak	20	do	14	do	6	S21E	18	do	
34, 9, 10	W Oak	18	N24E	32	do	10	N37W	27	do	
do	do	25	N78E	21	do	18	S17W	16	do	
42, 8, 9	W Oak	24	S36E	11	do	16	N18E	11	do	
do	do	20	N23W	17	do	21	S76E	27	do	
56, 7, 8	W Oak	18	S20E	27	do	10	N53W	36	do	
do	do	20	S24W	13	do	18	S20E	17	do	
11, 2, 13, 4	W Oak	20	N77E	9	do	12	N37W	27	do	
do	W Walnut	4	S77W	20	do	20	S76W	41	do	
14, 14, 15	B Oak	10	S33E	7	do	36	N23E	18	do	
do	do	4	N53W	13	do	36	S52E	17	do	
9, 14, 16, 6	Hickory	6	S71E	15	do	4	S75W	14	do	
do	do	16	N70W	8	do	20	S18W	21	do	
8, 9, 16, 7	do	4	N61E	23	do	10	N27E	16	do	
do	do	4	S35W	12	do	20	N16E	27	do	
7, 8, 17, 8	B Oak	24	S86E	17	do	6	S8E	17	do	
do	do	6	N13W	25	do	10	N27W	21	do	
13, 14, 23, 24	W Oak	34	S70W	30	do	10	S45W	34	do	
do	Hickory	6	S76E	25	do	3	N61E	6	do	
14, 15, 22, 23	W Oak	20	S71E	16	do	10	S71W	26	do	
do	do	15	S63W	18	do	10	N57E	10	do	
17, 6, 21, 22	do	18	N62E	30	do	10	S16W	26	do	
do	do	4	S62W	21	do	12	N5E	17	do	
16, 7, 24, 1	Cherry	4	S21E	4	do	10	S27W	16	do	
do	Haw	3	N86W	13	do	11	N17E	31	do	
17, 6, 19, 20	W Oak	11	S8E	13	do	4	S27E	35	do	
do	do	13	N16W	17	do	12	N46W	71	do	
23, 20, 25, 26	do	30	S71E	27	do	16	S17W	16	do	
do	do	4	N80W	8	do	10	N16E	14	do	

These notes are found on the Book of Columbus and do not agree with the ones made in red ink and taken from the plat - a copy of which is here attached marked A.

Corrected bearings with field notes taken by W. H. ...

to R at 3