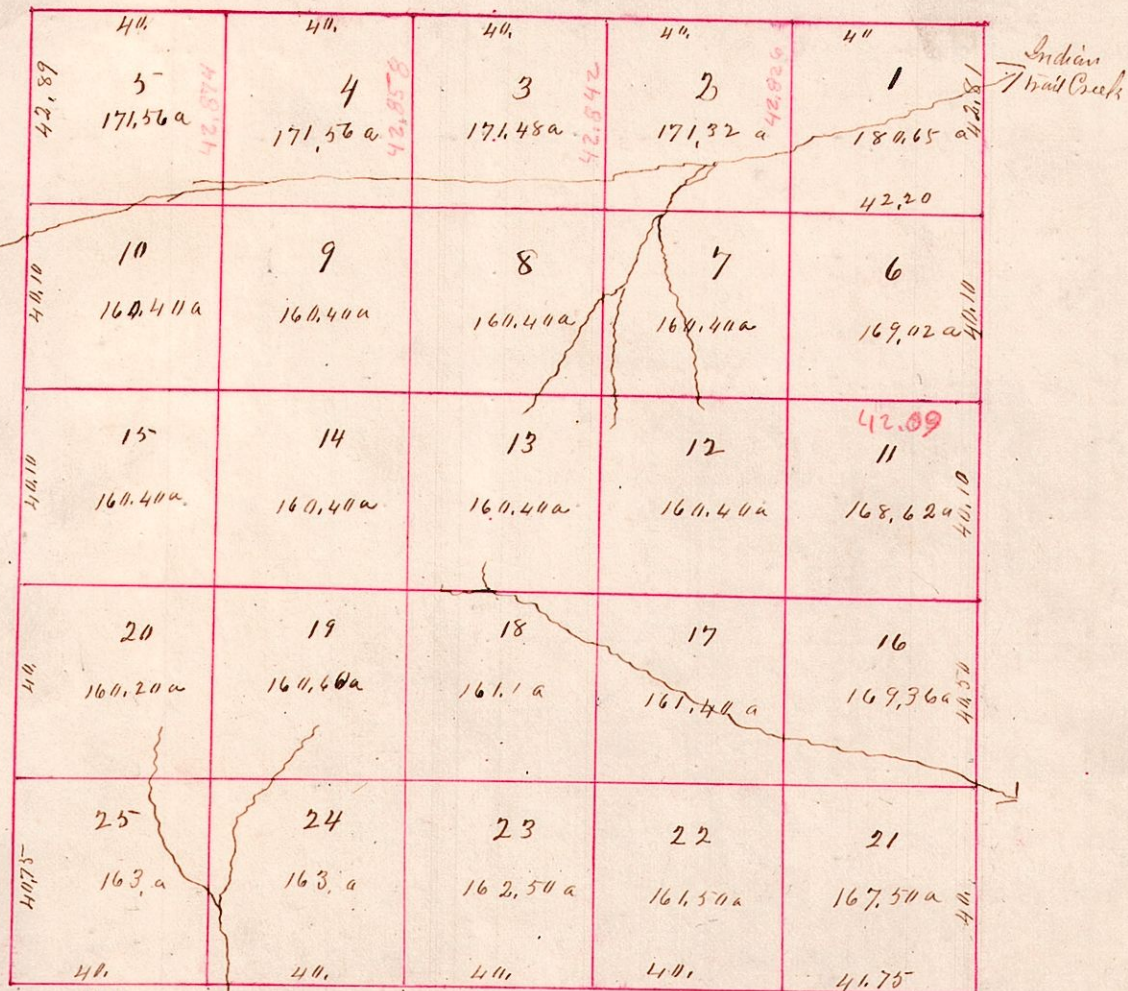


Township 9 Range 5, 1st Quarter T₉ (Walnut Creek T₉)



Station Bearing, Dist. Course Link, Lat. P. Line Diam. Course Link

Station	Bearing	Dist.	Course	Link	Lat.	P. Line	Diam.	Course	Link
21.5E	Elm	36	N57E	38					
25.8W	W Oak	25	N35E	38					
16.21E	W Oak	16	N57W	36					
"	Hickory	21	S54W	39					
20.25W	B Oak	20	N52W	37					
"	Hickory	25	S75E	39					
5.4W	W Oak	5	S32E	49					
"	do	5	N52E	34					
1.8E	Bonwood	1	S53W	30					
"	W Oak	1	S6W	30					
16.11E	Hickory	16	S34E	47					
"	W Oak	11	N11W	29					
15.20W	Bum	15	N68E	34					
"	Hickory	20	S30E	33					
10.15W	Chestnut	15	S41E	50					
"	do	10	N26E	62					
6.11E	Hickory	11	S54W	24					
"	W Oak	6	N25W	37					
1.6E	Chestnut	6	S40W	11					
"	do	1	N52W	33					
5.10W	W Oak	5	N70E	17					
"	Hickory	10	S62E	36					
4.5W	White wood	4	S19E	32					
"	do	5	S56W	17					
4.5	Sugar	9	S58E	47					
9.10	Hickory	5	N76W	30					
9.10	W Oak	14	S42E	17					
14.15	do	15	S54W	32					
14.15	B Oak	14	N83E	23					
19.20	do	15	N41W	39					
19.20	W Oak	19	N74E	28					
24.25	do	24	S52E	39					
24.25	Maple	24	N17E	58					
"	do	25	N63W	70					
33.24	W Oak	23	N21E	42					
"	Bonwood	24	N42W	45					
18.17	Hickory	23	S49E	17					
23.24	Chestnut	19	N46W	27					
13.14	W Oak	18	S73E	42					
18.19	Bonwood	14	N9W	20					
8.9	W Oak	9	N87W	42					
13.14	Bonwood	13	S43E	9					
8.4	Elm	8	S24E	43					
8.9	W Oak	4	N41W	64					
3.4	R Oak	3	S35E	36					
"	W Oak	4	S76W	27					
2.8	W Oak	3	S72W	42					
"	do	2	S58E	58					
2.3	Chestnut	7	S26E	9					
7.8	W Oak	3	N45E	38					
7.8	Hickory	12	S47E	11					
12.13	W Oak	8	N47W	50					
12.13	B Oak	17	S41E	37					
17.18	W Oak	18	S64W	28					
17.18	Bonwood	33	S27W	9					
22.23	Bum	18	N27W	40					
22.23	W Oak	23	N54W	21					
"	Hickory	32	N35E	48					
21.22	Bonwood	21	N30W	12					
"	W Oak	22	N17E	54					
16.17	W Oak	22	S53W	6					
21.22	Bonwood	17	N52W	4					
16.12	Bonwood	16	S58E	10					
16.17	Hickory	12	N32W	25					
6.7	W Oak	7	N39W	40					
11.12	do	12	N13W	27					
1.2	Maple	6	S34E	24					
6.7	W Oak	1	N89E	30					
1.2	Chestnut	2	S19W	30					
"	B Oak	1	S7E	77					

6.
5/38