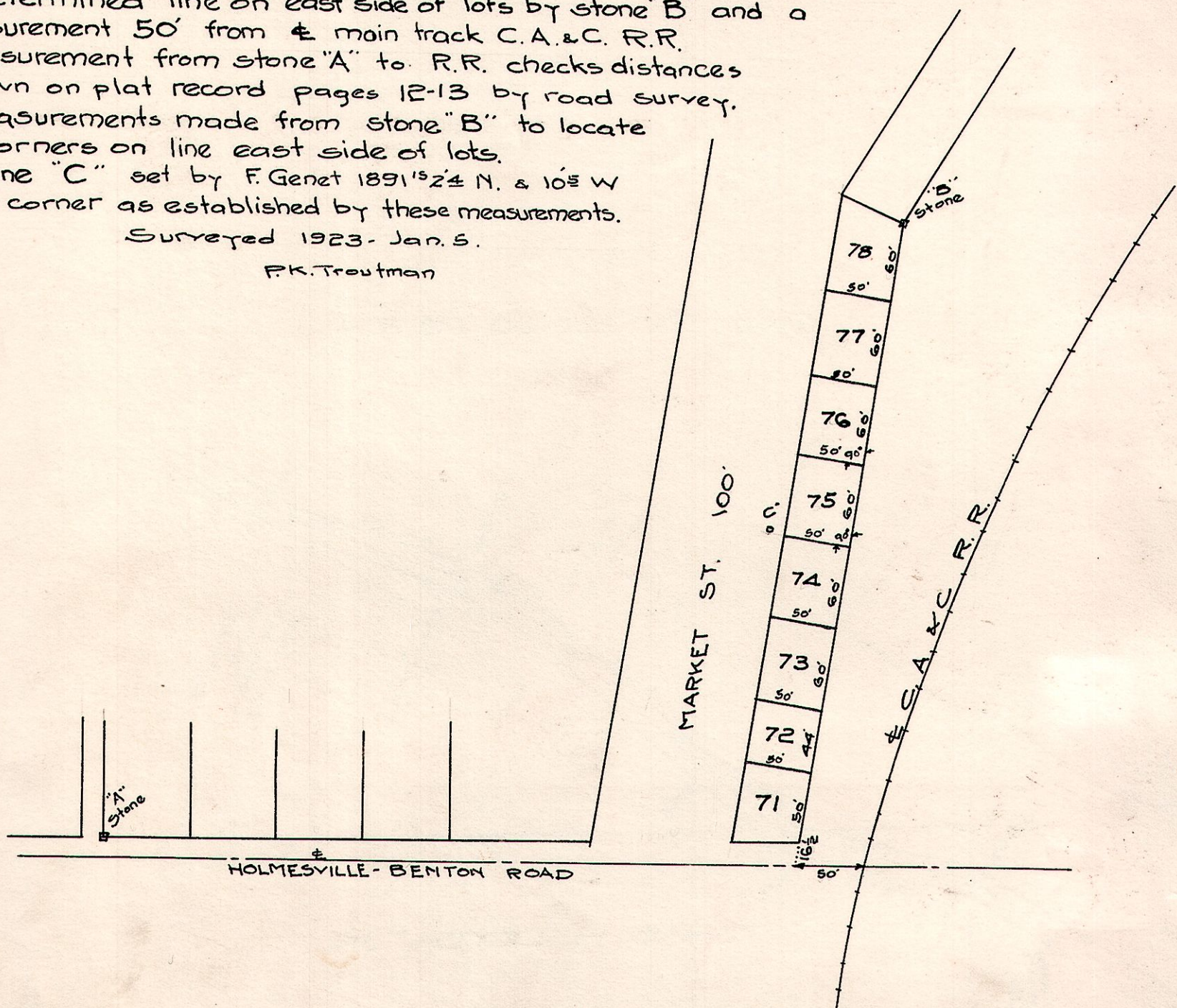


13-13-3 Holmesville

Survey to determine location Lots 75 & 76. -Chas Hott-
 Set stakes 2"x2" at lot corners.
 Determined line on east side of lots by stone "B" and a
 measurement 50' from the main track C.A.&C. R.R.
 Measurement from stone "A" to R.R. checks distances
 shown on plat record pages 12-13 by road survey.
 Measurements made from stone "B" to locate
 lot corners on line east side of lots.
 Stone "C" set by F. Genet 1891 1/2 N. & 10 W
 of lot corner as established by these measurements.
 Surveyed 1923- Jan. 5.
 F.K. Troutman



MILLERSBURG

Survey made for Mrs Devore to divide Lot # 210.
 East part sold to Dr. Harmony.
 Note - Lot 210 checks 82' to street line
 Surveyed Jan 8. 1923. W.L. Reidenbach.

