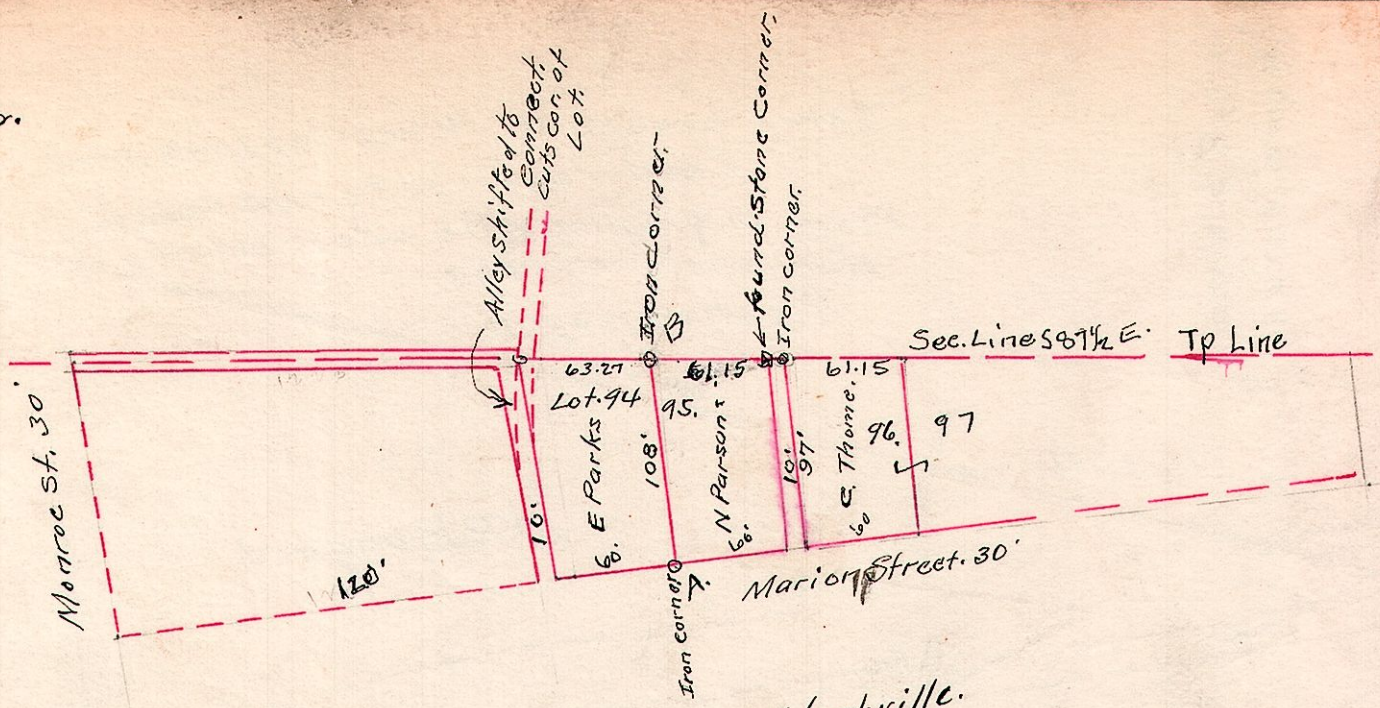


R. T. See
15-19-24
N. E. Qr.



Jones Addition Nashville.

Oct. 21, 1921. Surveyed for line A-B. Corner B is an agreed corner as established this date and is 2.12 ft. east of the surveyed corner, the alley cuts off a small corner of Lot 94. One standard corner found. measurements were made from old established Lines of same allotment.
W. L. Reidenbach, Surveyor
E. V. Gray helper.