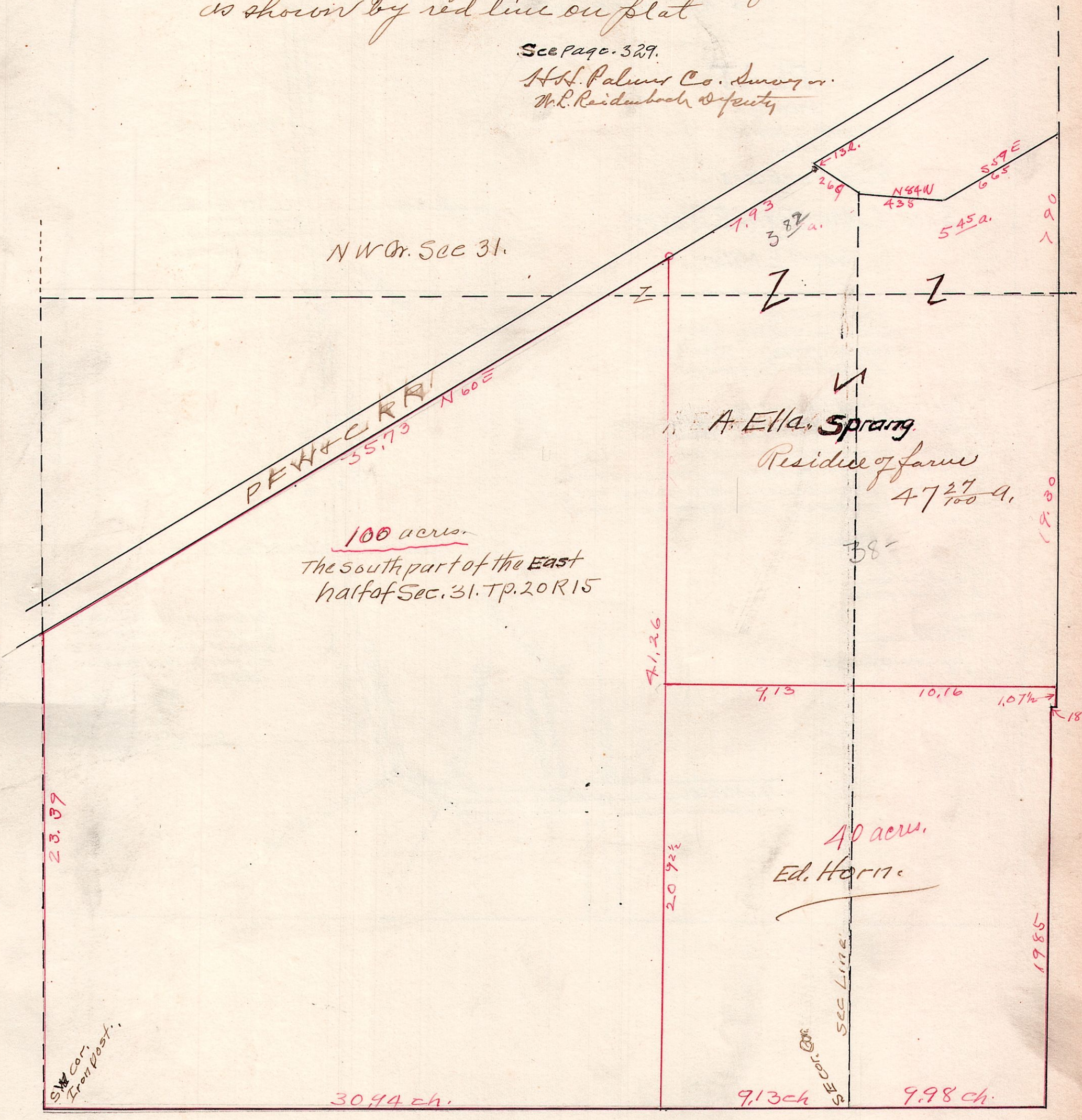


R. 15, T. 20. Sec. 31+32, Parts

June 3, 1919.

Surveyed for A. Ella Sprang et al. cutting off 100 acres off the west side of the South part of East half Sec. 31. T. 20. R. 15 and 40 acres out of the South east corner of said Quarter and the West part of the South west Quarter of Sec. 32. T. 20. R. 15 as shown by red line on plat

See page 329.
H.H. Palmer Co. Surveyor
W.L. Reidenbach Deputy



NW Qr. Sec 31.

PEH + CRR
N 60 E
35.73

100 acres
The south part of the East
half of Sec. 31. T. 20. R. 15

A. Ella Sprang
Residence of farm
47 ²⁷/₁₀₀ a.

40 acres
Ed. Horn

23.37

SW Cor.
Iron Post.

30.94 ch.

71.26

20 9 ²/₂

9.13 ch

9.13

Sec Line

9.98 ch.

10.16

10.71

19.85

18.2

19.80

9.01

5.45 a.

N 84 W
438

S 59 E
665

E 132.
269

7.93
3 82 a.