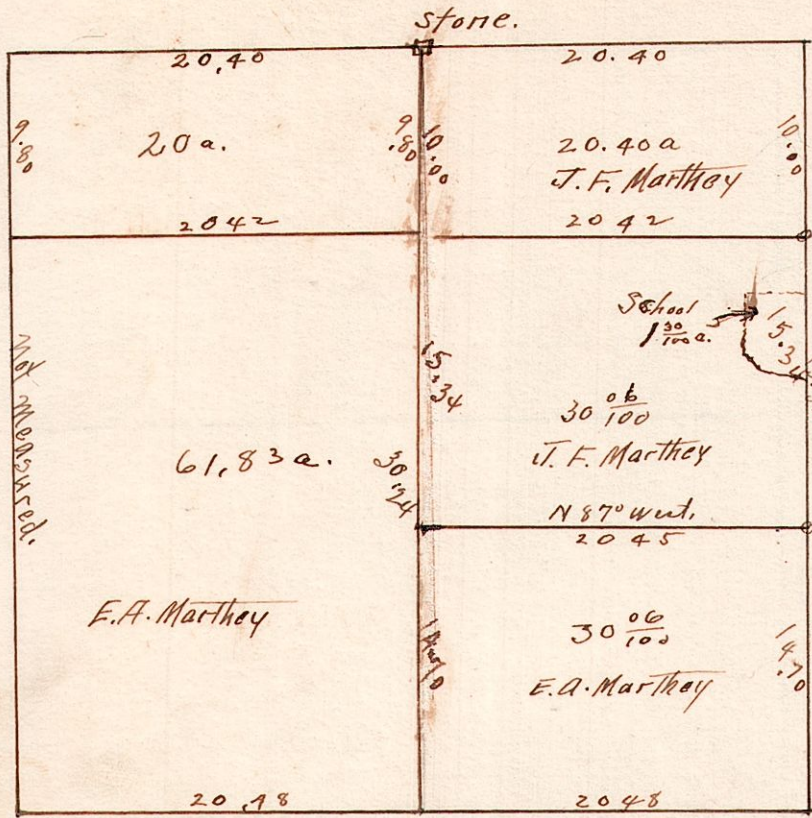


R. 12. Tp. 15 Sec. 35
N.E. Qr.

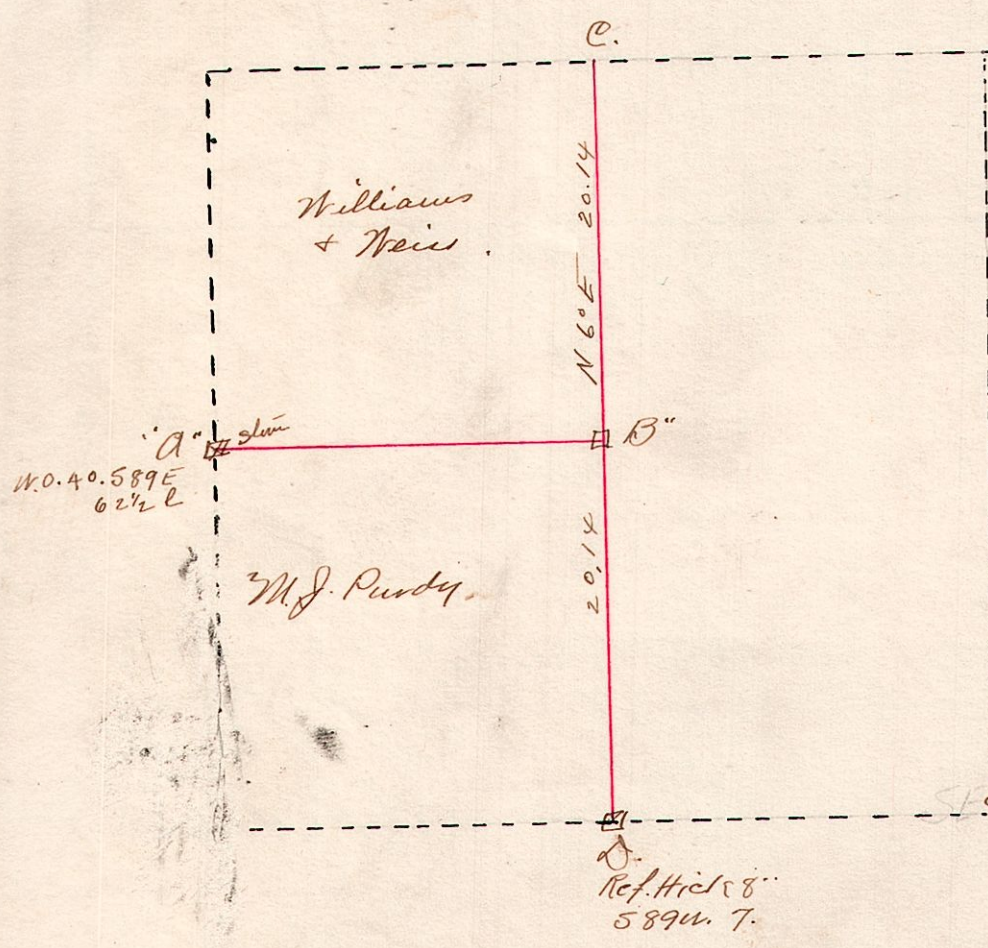


Survey made for J. F. Marthey
and E.A. Marthey of the Northeast
Quarter of Sec. 35, in Tp. 15 Range 12.
to cut off 20 acres at the north end of
the west half of the quarter and to
divide the south part of the east half-
of the quarter as shown on plat.
Feb. 15th 1916.

W.L. Reidenbach
Deputy Co. Surveyor

R. 8 Tp 8 Sec. 24. N.W. Qr.

April 5th 1916



Surveyed the west part of the
N.W. Qr. of Sec. 24. Tp. 8. R. 8 for
M.J. Purdy, Emanuel Weis and
Albert Williams to determine the
Line "A" "B"
at "C" I found stone in good shape.
at "D" I found stone in good shape.
at "B" I set a stone on a direct
line and midway between C & D.
at "A" I found a mound of stone which
Emanuel Weis says was there a long time
I set a dressed sand stone corner in
the center of this mound and take
with white oak 40 589 E 62 1/2 L
center of sec and run line A to B. direct.
24. Tp 8 R 8

Present Emanuel Weis
Robt Williams and
M.J. Purdy.
W.L. Reidenbach
Deputy Co. Surveyor