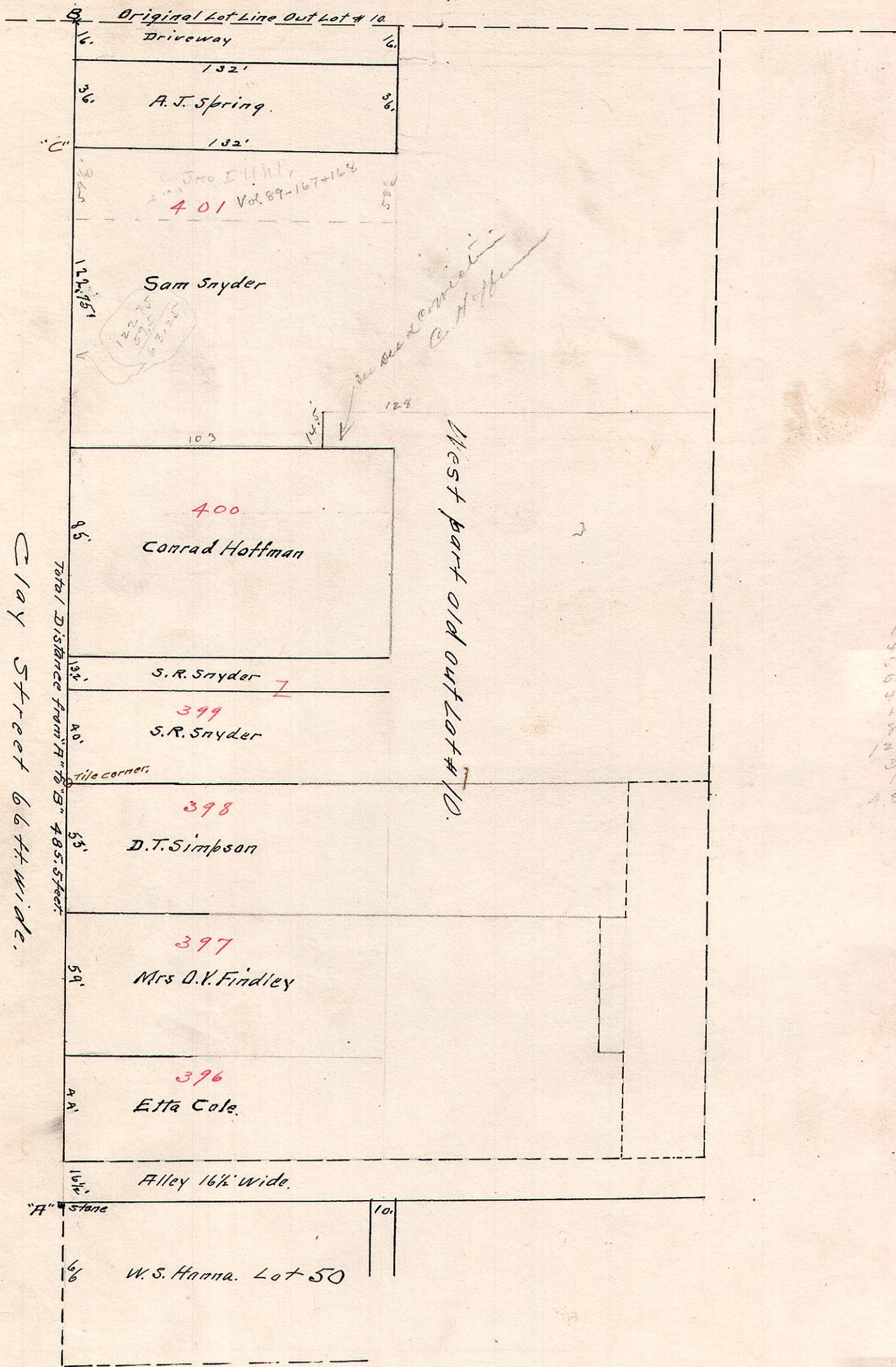


7-9-12  
Millersburg.



16 1/2  
44  
59  
53  
40  
13.2  
98  
122.75  
36  
16  
485.50

A Survey made for S. R. Snyder and A. J. Spring to establish line "A" "B" and corner "C" I begin at cornerstone "A" and continue east side of Clay st. giving each lot its "ball" in Deeds and find same conform to existing lines defined on ground to the North line of Lot 400. I then continue measurement north to original lot line, north side out lot # 10 and then begin there and measure out Lot of A. J. Spring as described in Deed commencing 52 ft south of Northwest corner and as shown on above plat. This also conforms to Survey Vol 3. Page 77 - Nov. 23rd 1915.

N. L. Reidenbach Deft Surveyor