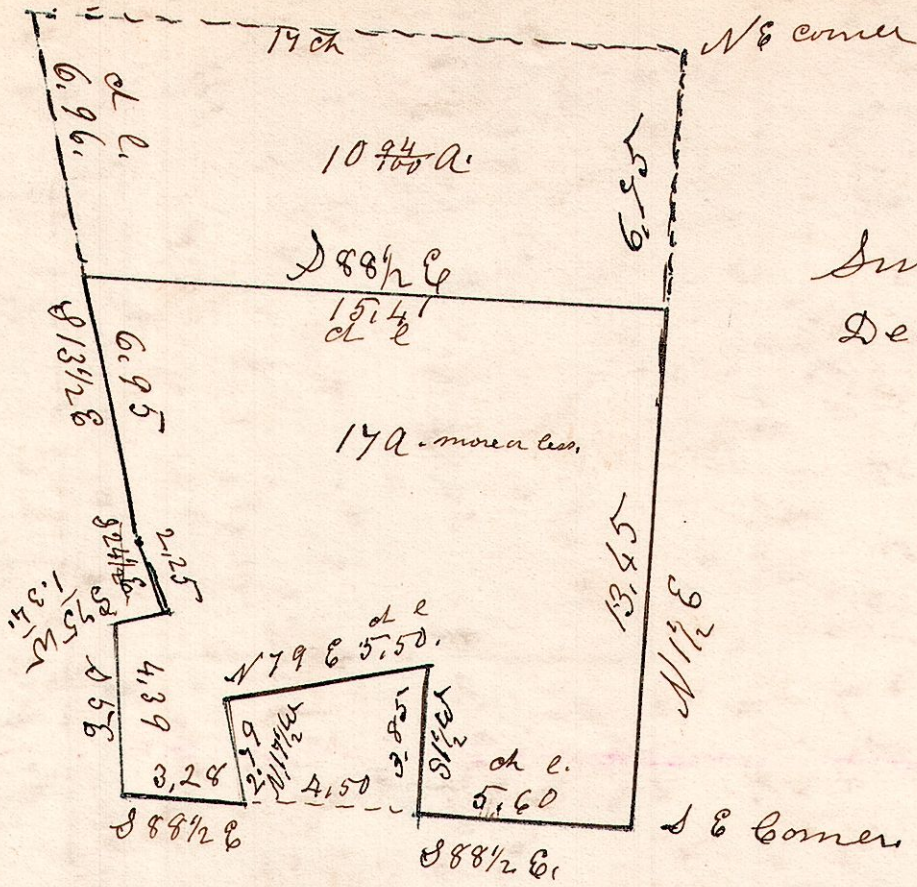


East 1/2 of lot 42. 12th gr 59. R 7.

7-9-42. 12th gr.

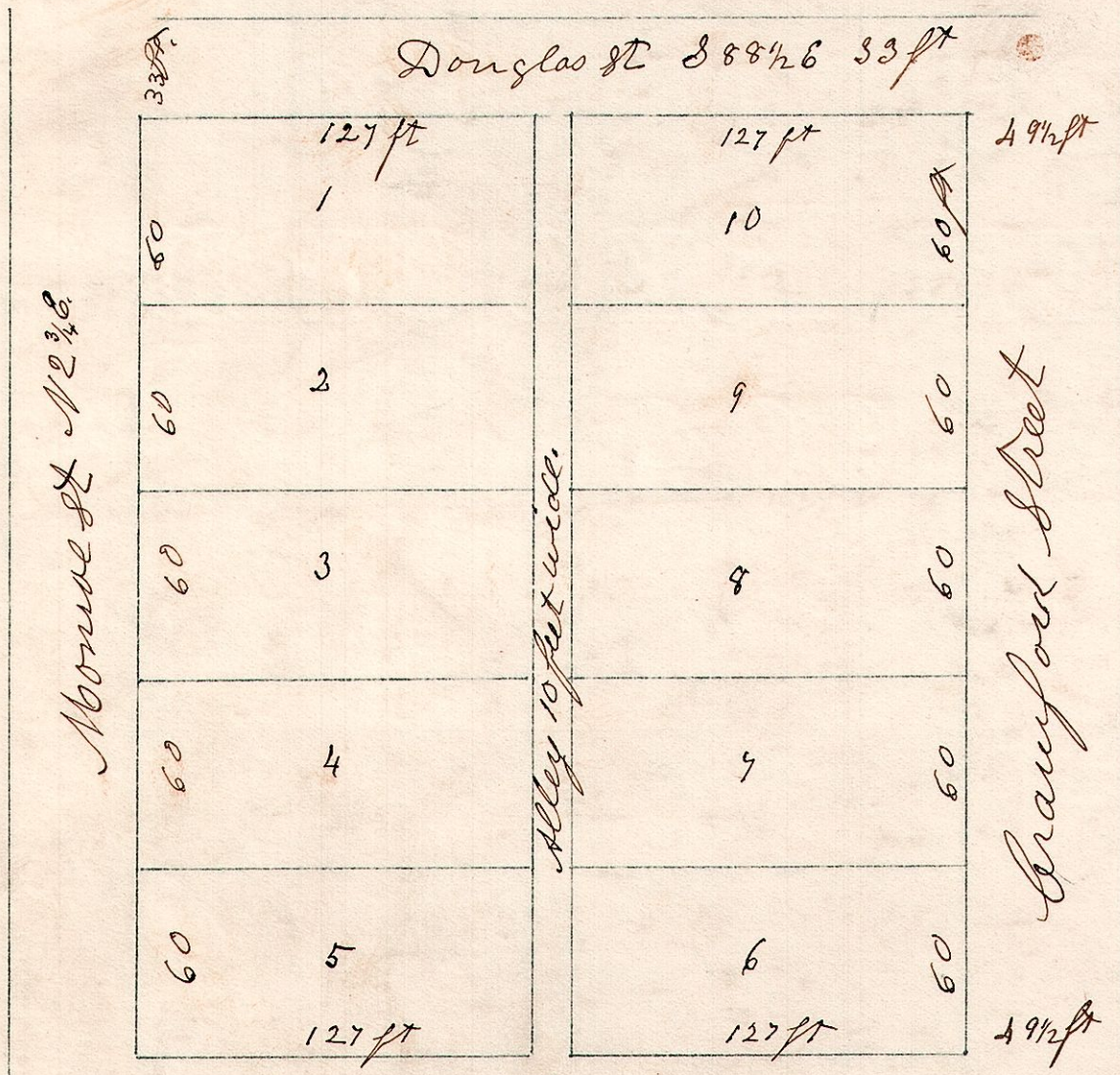


Surveyed for J. Liggitt
December 24th 1840.

7-9-19.

April 1873 N

C. Bomerks Addition to Millerburg.



April - 1873. I do hereby certify that the above is a correct plat of in lots, situated on the north west part of out lot No 4, and on the north part of out lot No 5, in John Ingles' second addition of lots to the town of Millerburg, the County seat of Holmes Co, Ohio and being on part of the north east quarter of Section 19. in Township 9. of Range 7.