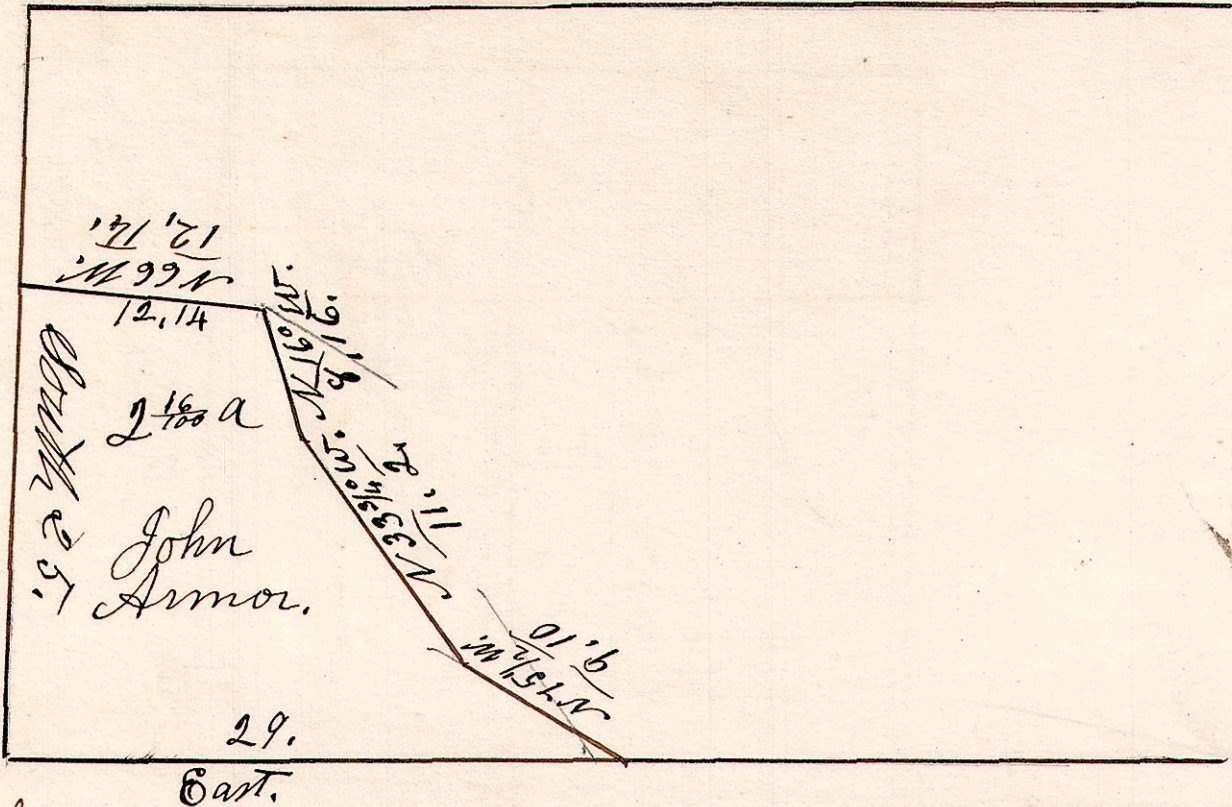


7-9-24. 1<sup>st</sup> q<sup>r</sup>

Being the s w part of lot 24. 1<sup>st</sup> q<sup>r</sup> School Land.

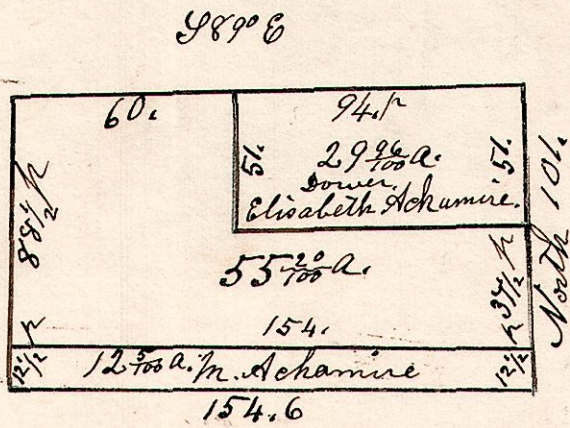


Surveyed the above Jan. 13<sup>th</sup> 1838. Being part of lot 24. 1<sup>st</sup> q<sup>r</sup> quarter, in Township 9. of Range 7. School Lands.

7-9-6-2<sup>nd</sup> q<sup>r</sup>

Lot No 6. 2<sup>nd</sup> quarter. Township 9. R 7.

Surveyed November 24<sup>th</sup> 1853.



7-9-8-2<sup>nd</sup> q<sup>r</sup>

Lot 8. 39. R 7. Sec 2. Military.

