

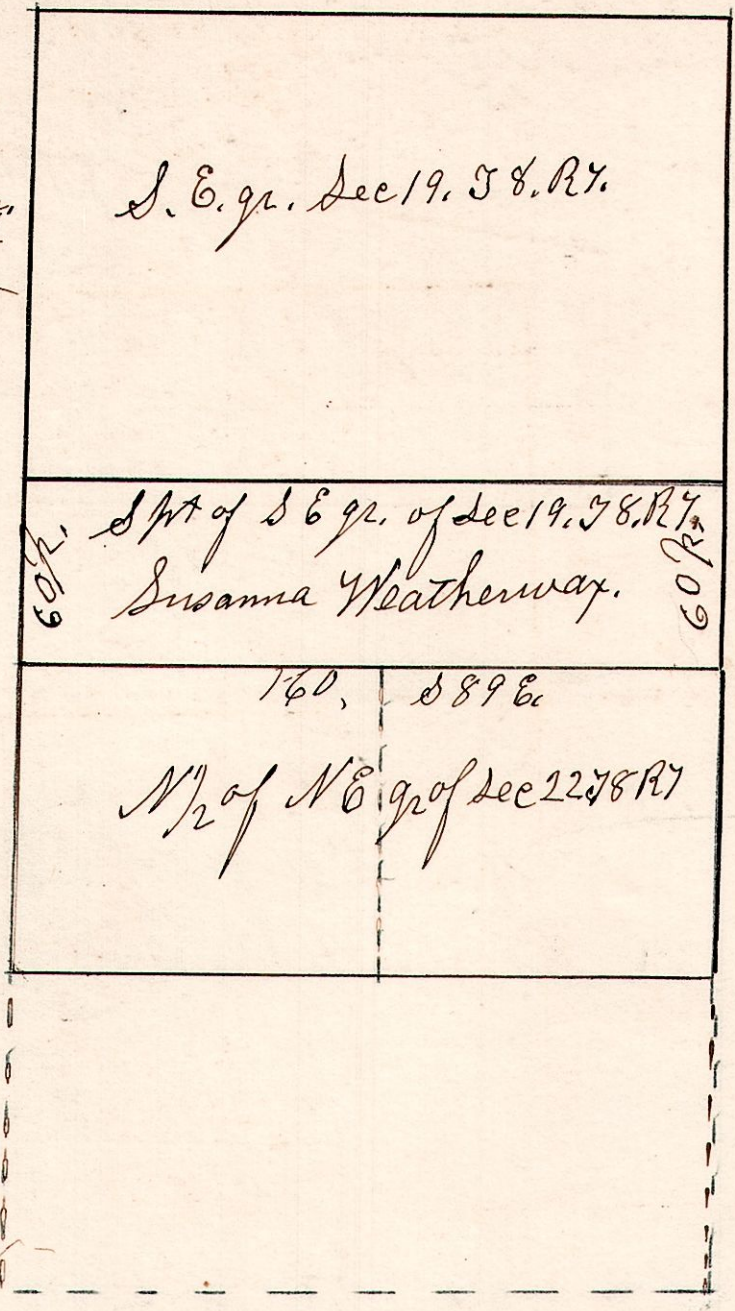
7. 8. 19-22.

May 3^o 1853

Surveyed the 60 acres for widows Dower, the lands could not be divided without manifest injury, We appraise the same subject to widows Dower at \$4000.⁰⁰

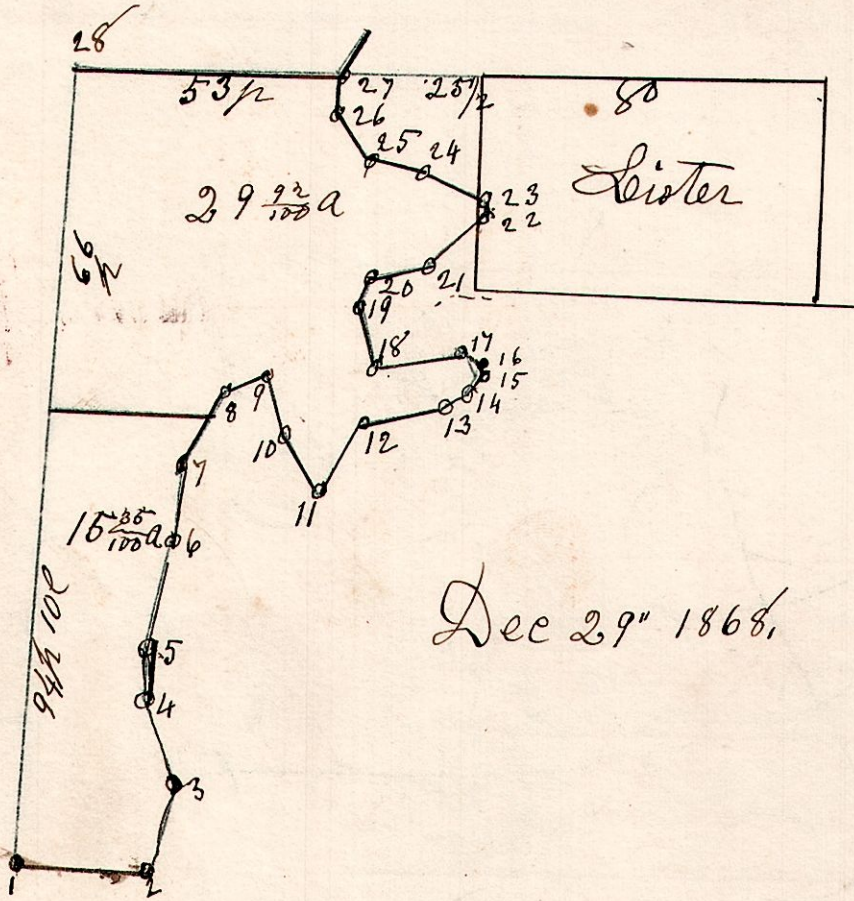
Commissioners
Henry Shepler
John Carpenter
Samuel Robinson

Surveyor
Samuel Robinson.



7-9-22. W pt S W q. of Sec 22. T 8 R 7

C. Whl. Dec 29th 1868.



Dec 29th 1868.

- | | | |
|----|-------------|------------------------------------|
| 1 | S 88 1/4 E. | 27 feet to center of Killbuck |
| 2 | N 14 1/2 E | 18 " |
| 3 | N 22 1/2 W | 20 " |
| 4 | N 6 W | 8 " |
| 5 | N 12 E | 26 " |
| 6 | N 2 1/2 E | 14 " |
| 7 | N 26 E | 18 " — S Witherow Dist |
| 8 | N 69 E | 9 " |
| 9 | S 18 E | 13 " |
| 10 | S 29 E | 14 " |
| 11 | N 29 E | 17 " |
| 12 | N 76 1/2 E | 18 " |
| 13 | N 59 E | 4 " |
| 14 | N 30 E | 4 " |
| 15 | N 28 1/2 W | 3 " |
| 16 | N 72 1/2 W | 2 " |
| 17 | S 75 W | 17 " |
| 18 | N 15 W | 13 " |
| 19 | N 21 1/2 E | 7 " |
| 20 | N 76 E | 12 " |
| 21 | N 47 E | 15 " |
| 22 | N 18 W | 2 " |
| 23 | N 68 W | 12 " |
| 24 | N 76 1/2 W | 14 " |
| 25 | N 37 1/2 W | 10 " |
| 26 | N 2 W | 9 " from center of creek to NW cor |
| 27 | N 88 1/4 W | 53 " 100. to place of beginning. |
| 28 | S 1 1/4 W | 160 " |