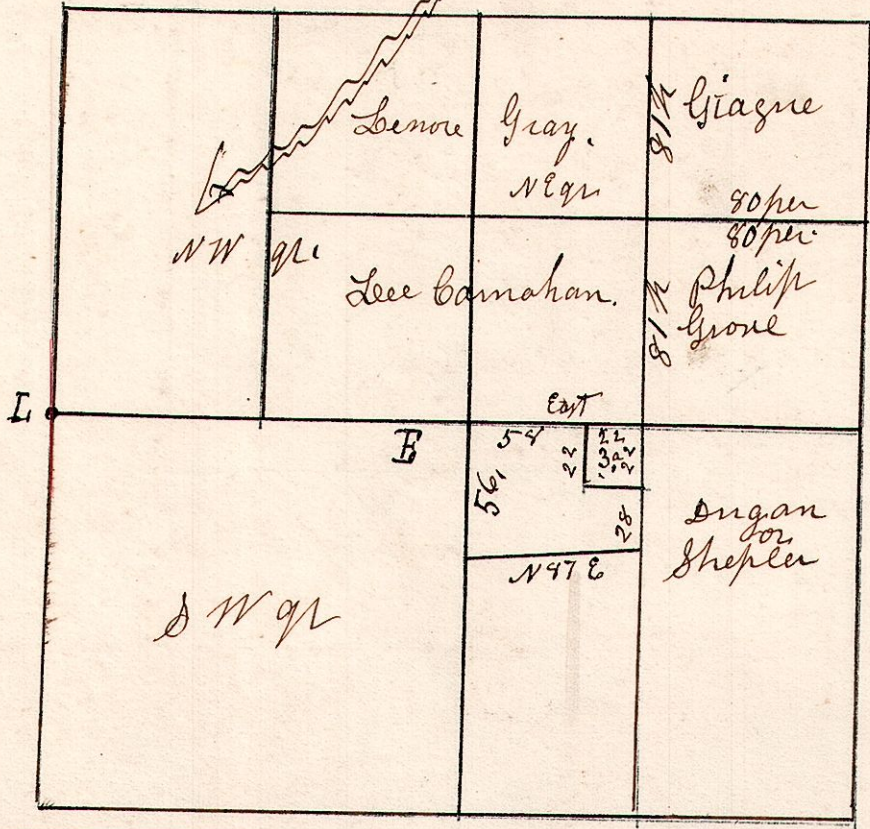


7.8.8.

Aug 30th 1871. Surveyed the Kelly Truce.
 Feb 14th 1852 surveyed the Grove Truce. & Giazue Truce.

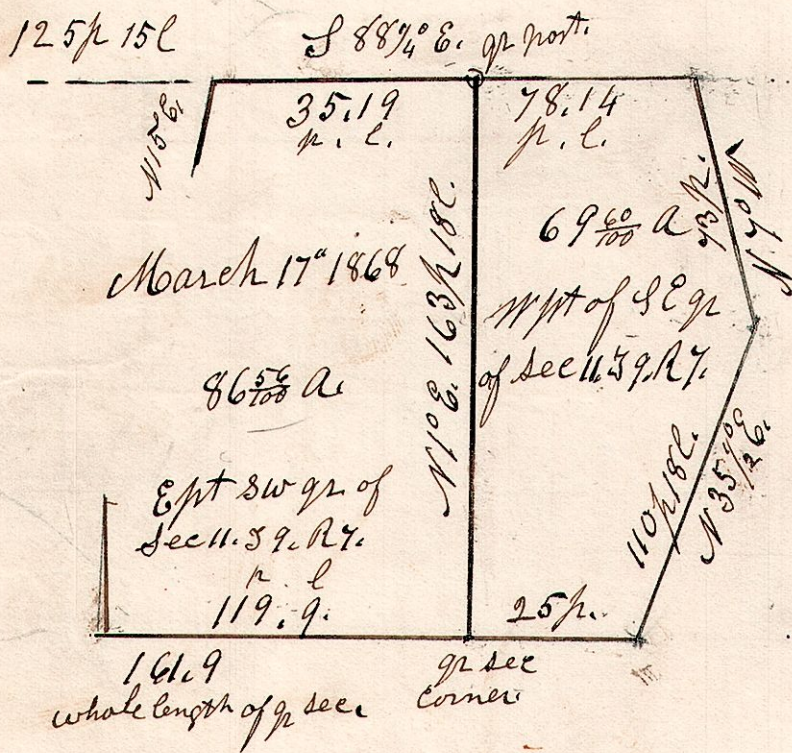
894

L_u Beech 20. N51E 61.
 E. Woah 20. N40 W 61.



Hickory 15. S43W 12 1/2.
 Do 18. N66 E 31

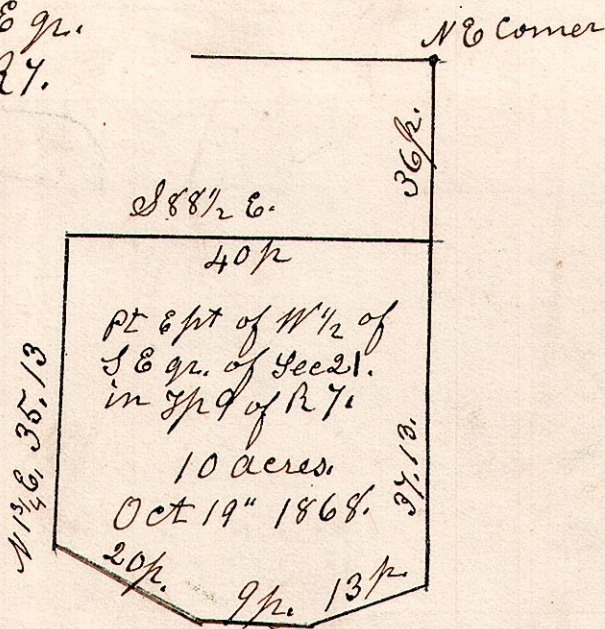
7.9.11. Moore 17 1868.



George Calhoun
 to
 J. G. Adams.

7.9.21. Pt E pt of W 1/2 of S E gr. of Sec 21, in Sp 9 of R7.

October 19th 1868.



937 (9)
 32
 1
 25
 22