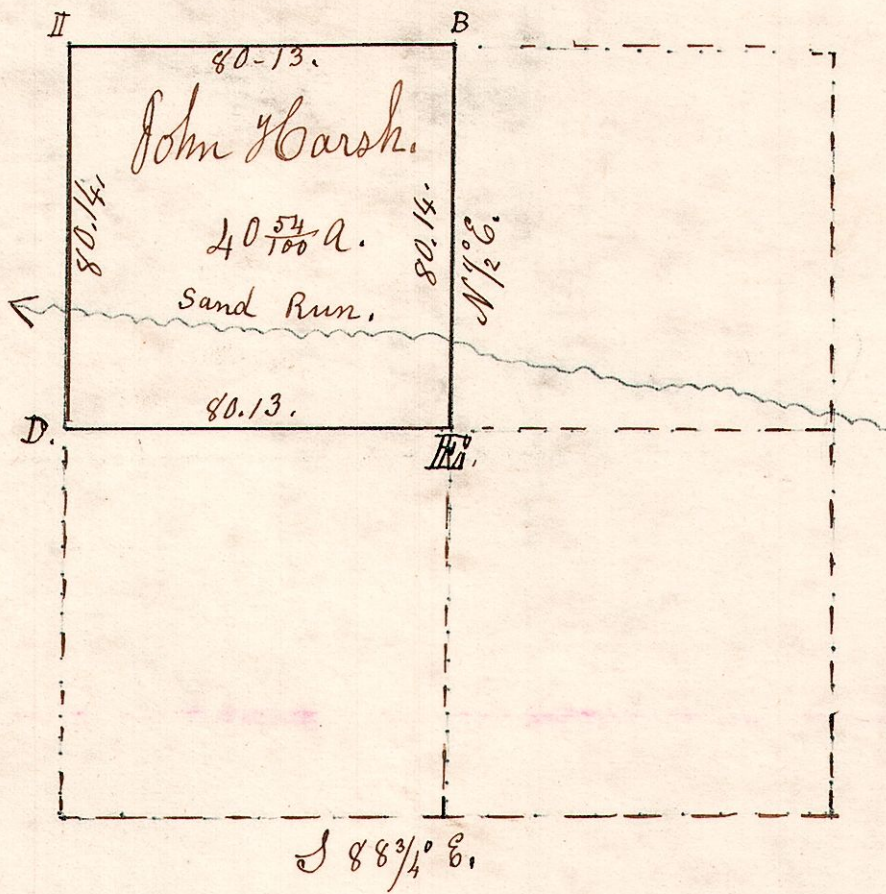


6-9-24

March 27<sup>th</sup> 1850.

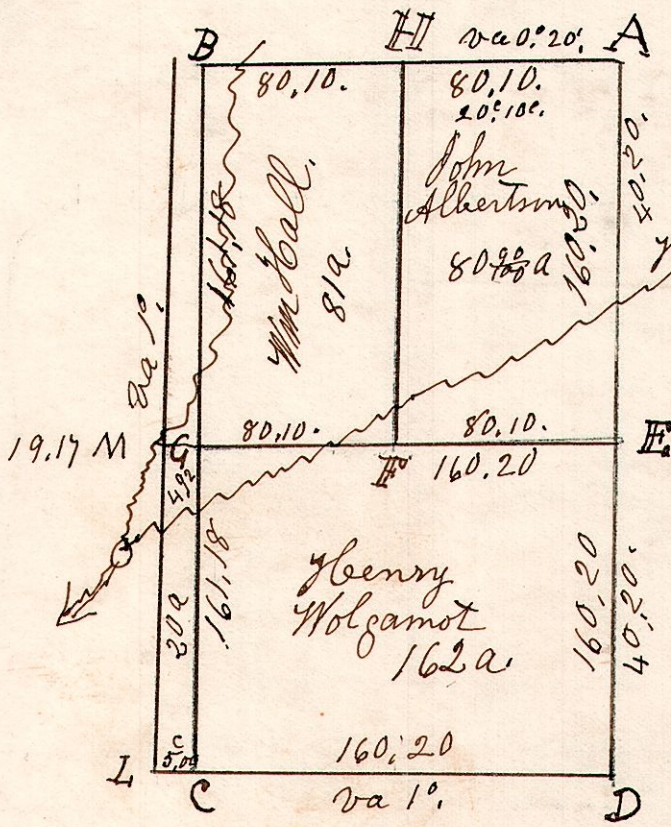
- D. Beech 8 N75E. 14.
- " W.Oak 20 S 83W 36.
- E. Gum 18. N65W 19.
- " Do 12. N46E. 2 1/2.
- B. Walnut 20 N10E 12.
- " Poplar 5 S 25E 23.
- I. W.Oak 20 S 85E. 16.
- " do 24 S 50W. 33.



I do hereby certify that the above is a correct plat & notes of the NW 1/4 of the N.E. 1/4 of Sec 24 T9. R 6. March 27<sup>th</sup> 1850. Samuel Robinson Surveyor.

6-9-6

November 9<sup>th</sup> 1826.  
 Surveyed the East half of Section No 6. in T 9. of R 6. in the following manner



- A, W Oak 30. N64E 11. Maple 18 west 17.
- B, W Oak 30. N37E 17. Honey 12 S 26W 32
- C, W Oak 20. N21W 29. W Oak 24 S 9W 13
- D, W Oak 16 N12W 22. W Oak 15 S 1E. 23
- E, B. Oak 13 N22E 7 1/2. W Oak 16. S 45E. 28
- F, W Oak 20 N41W 8. Sugar 15. S 25E. 47
- G, Ironwood 6 S 88E 19 1/2 Sugar 10. N49W 31
- H, W Oak 30. East 24. Dogwood 6. N5 1/2 W 11 1/2
- I, Maple 15. S 80W 36. Maple 12 S 35E 20 1/2
- M, Maple 20. S 85E 31. W Oak 15. S 68W. 21

Samuel Robinson