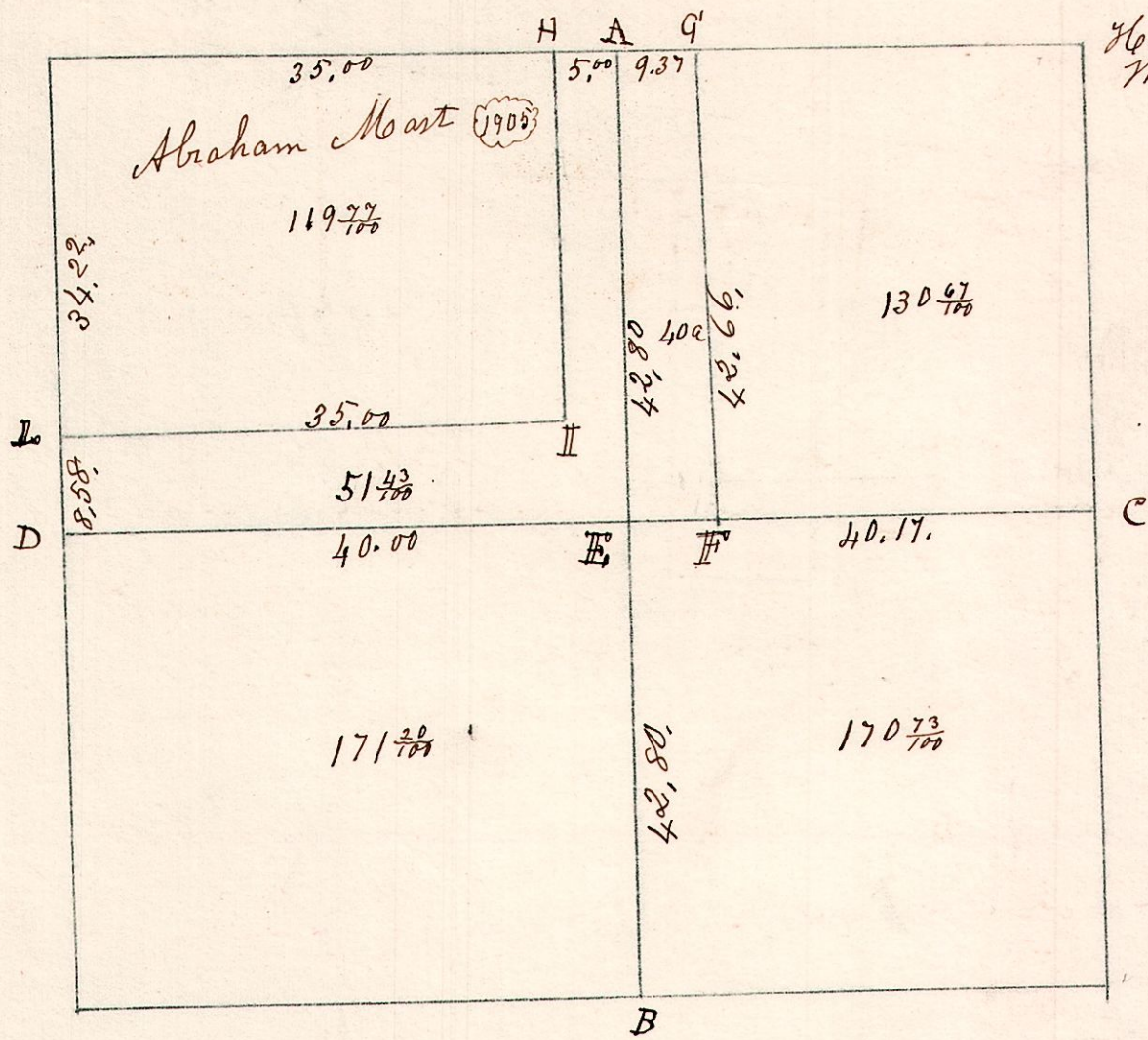


6. 9. 4.

June 9th 1826. Va 1° 25' N
E + W 1° 15'

S 31 W 31.

Hickory 16.
W. Oak 12 N 65 W. 6.



A	Poplar	30	S 49 E	13
B	W. Oak	20	S 48 W	46
B	Sugar	12	S 43 W	39
"	do	10	S 32 E	40
C	Chestnut	36	South	23
"	W. Oak	20	N 57 E	24
D	Poplar	24	N 10 E	40
"	Lynn	8	N 30 W	43
E	Poplar	30	S 75 E	10
"	Lynn	6	N 54 E	15
F	Beech	10	S 63 W	17
"	Maple	10	N 9 E	20
G	W. Oak	30	N 69 E	6
"	Maple	12	N 32 W	18
H	Elm	14	N 11 W	4
"	W. Oak	10	N 69 E	17
I	Beech	14	S 17 W	18
"	Maple	18	S 24 E	8
L	W. Oak	12	N 19 E	21
"	do	12	S 24 E	13

