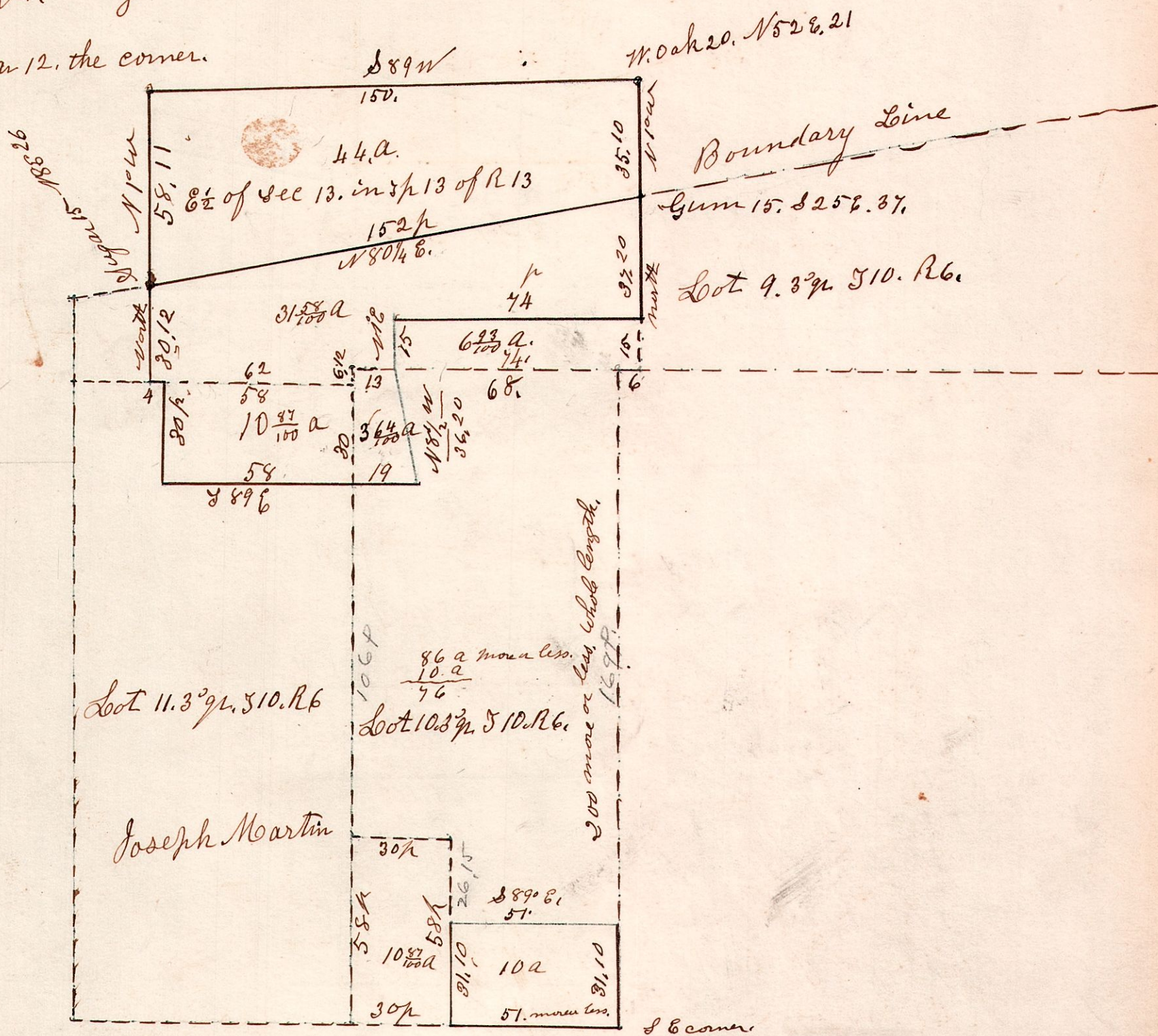


6, 10, 11, 3rd March 31st 1857.

A. Troyer dec^d heirs.

435

Sugar 12. the corner.



I do hereby certify that the above is a correct plat of the
 East half of (Trac) Section 13 in sp 13 of R 13, (congress) containing, 44 acres.
 also, pt of W pt of lot 9 in 3rd 510. R 6, Military, " 31 58/100 a
 also NW pt of lot 10 in 3rd 510. R 6 " 3 44/100 a
 and also the NE pt of lot 11 in 3rd 510 R 6 " 10 97/100 a
 90 9/100 acres.

Samuel Robinson
 Surveyor

March 31st 1857.

10 acres. S E pt of lot 10 Surveyed Feb 27 1857 for Jacob Mast