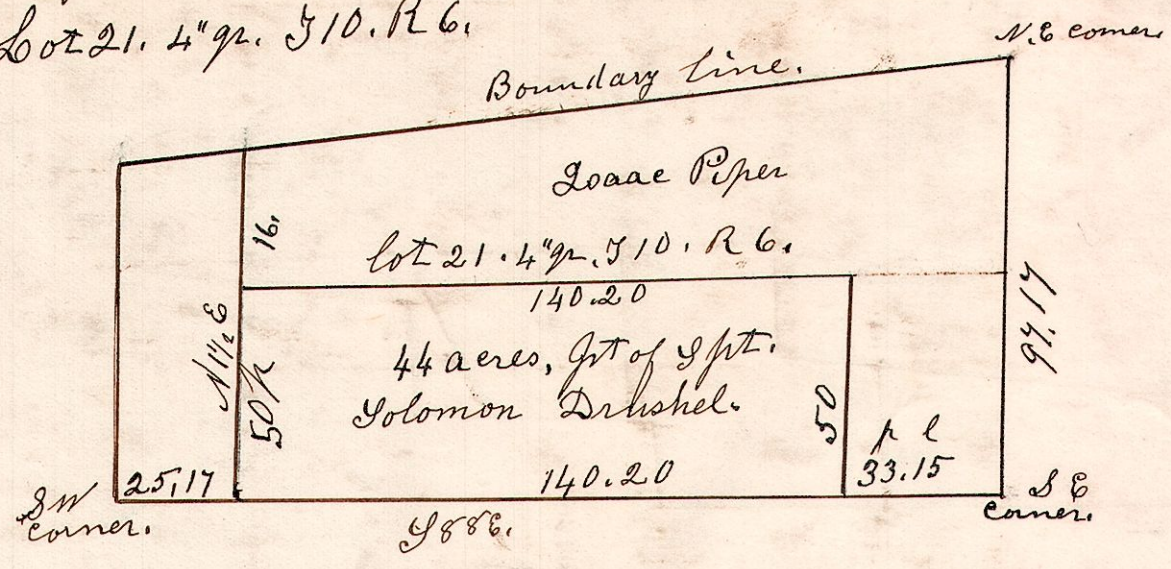


6.10.21  $\frac{4}{2}$ "

809

June 21<sup>st</sup> 1871  
 Lot 21. 4<sup>th</sup> gr. S 10. R 6.



June 21<sup>st</sup> 1871.

6.10.12.  $\frac{4}{2}$ "

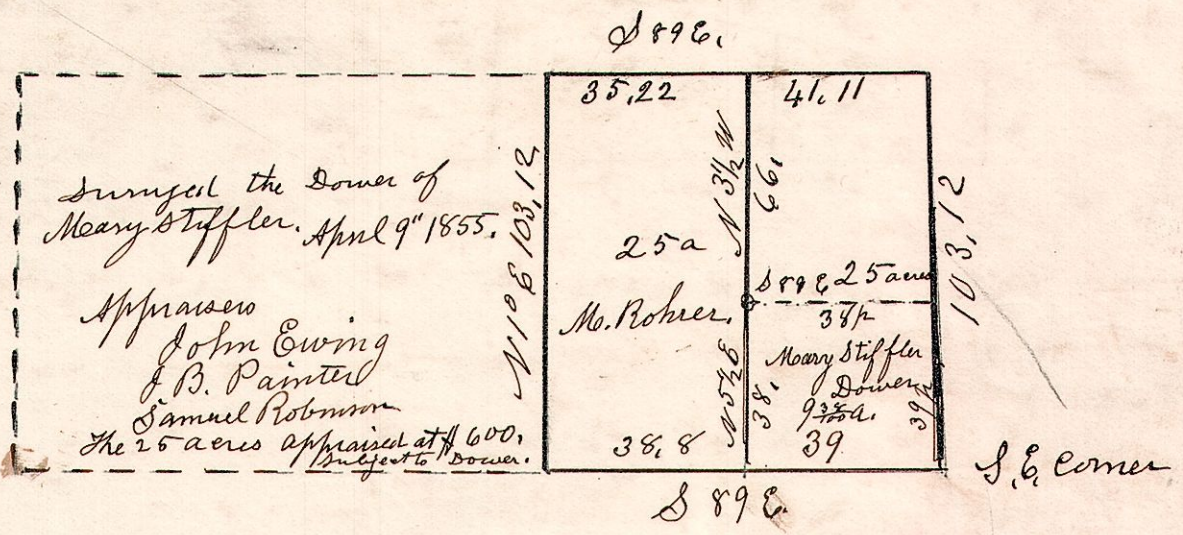
810

April 10<sup>th</sup> 1850.

Lot 12. S 10. R 6 sec 4.

April 10<sup>th</sup> 1850.  
 Surveyed the stuffer  
 25 acres

See Survey of 1848.

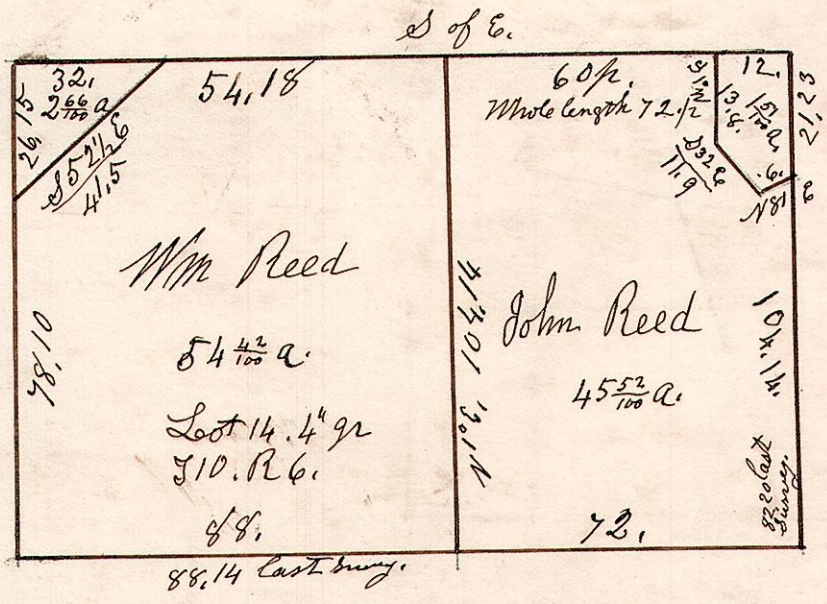


6.10.14.  $\frac{4}{2}$ "

811

Lot No 14. 4<sup>th</sup> gr. Sp 10. R 6.

Drumrod 6 N 71 $\frac{1}{2}$  E 6.  
 B. Jack 7 N 56 W 36.



W. Oak 10 N 79 $\frac{1}{2}$  E 9.  
 Crabapple 5 N 17 W 16.

Hickory 15 S 46 E 15.  
 Sugar 27 N 37 W 14.

W Oak 16 N 11 $\frac{1}{2}$  E 28.  
 Maple 10 S 3 $\frac{1}{2}$  W 12.

March 1845. Wm Reed W<sup>th</sup> surv for John Ewing.  
 last survey Sept 1<sup>st</sup> 1855 amt of acres at that  
 survey 54  $\frac{4}{100}$  a.

Thos Cole & part surv for John Ewing, last survey  
 March 22<sup>nd</sup> 1864 amt of acres at that time, acres 45  $\frac{52}{100}$