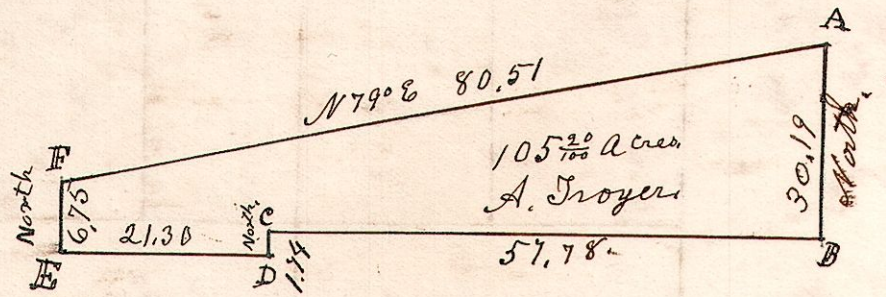


6.10.9 $\frac{3}{4}$

December 9th 1825.

807

Lot 9, 3rd q^r. S10. Range 6.



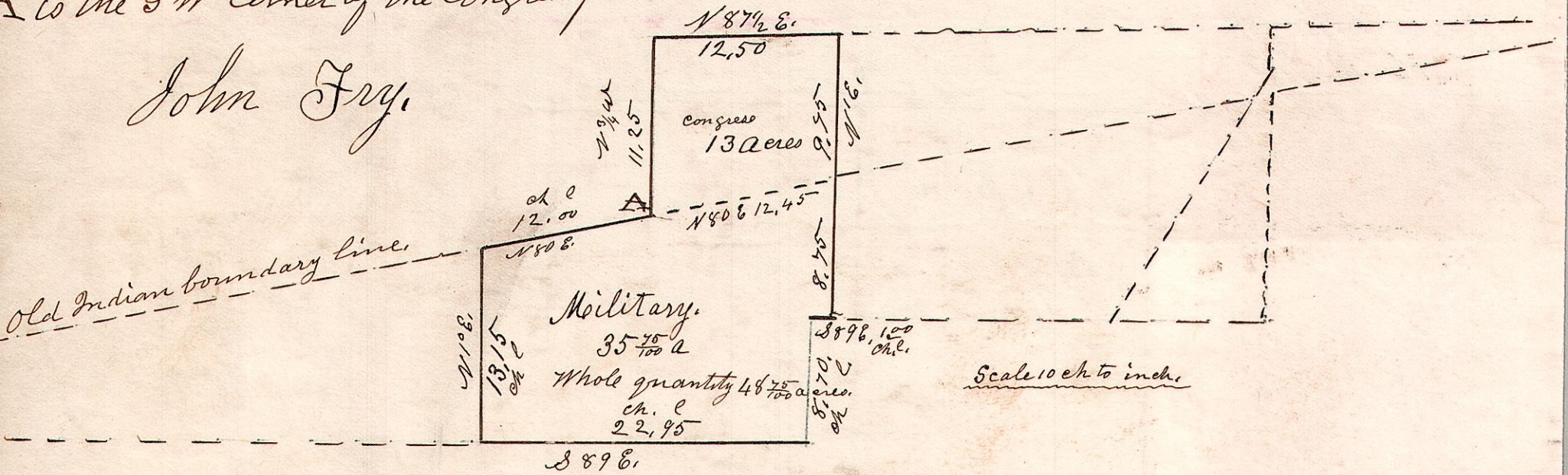
- A. W. Oak 24 S 3 W. 36.
- B. Hickory 18 S 10 E 6.
- C. W. Oak 24 N 44 W 15.
- D. Elm 14 N 2 E 5.
- E. Hickory 15 N 7 W 14.
- F. Hickory 18 S 79 W 33.

Surveyed the above December 9th 1825,
 Being Lot No 9. in the 3rd quarter of the 10th
 Township and 6th Range. of Military District.
 Samuel Robinson Co Surveyor.

6.10.5. $\frac{4}{4}$ April 14th 1842.
 12, 14, 10.

N.B. a Stone planted at each corner.
 A is the S W corner of the congress fraction

John Fry.



I do hereby certify the above to be a correct plat and notes
 of the west part of the south half (or south fraction) of section
 10. in T 14 of R 12, containing 13 acres. Also part of Lot No 5
 in T 10 R 6. section 4. Military land, containing 35 $\frac{75}{100}$
 acres situated near the middle of said lot.
 April 14th 1842.

Samuel Robinson
 Surveyor.