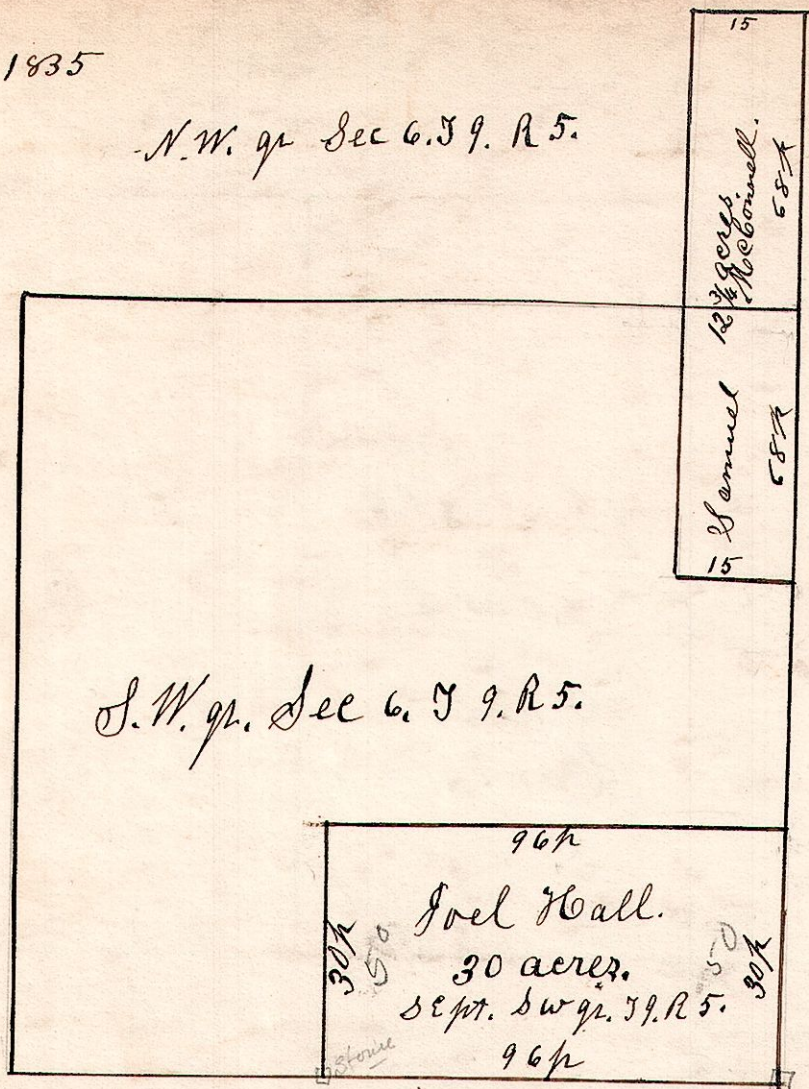


5. 9. 6. June 2^d 1835

N.W. q^r Sec 6. 59. R 5.



June 2^d 1835.
Surveyed 30 acres Taken out
of the South East corner of
the South west quarter of
Section 6. in Township
9. of Range 5.

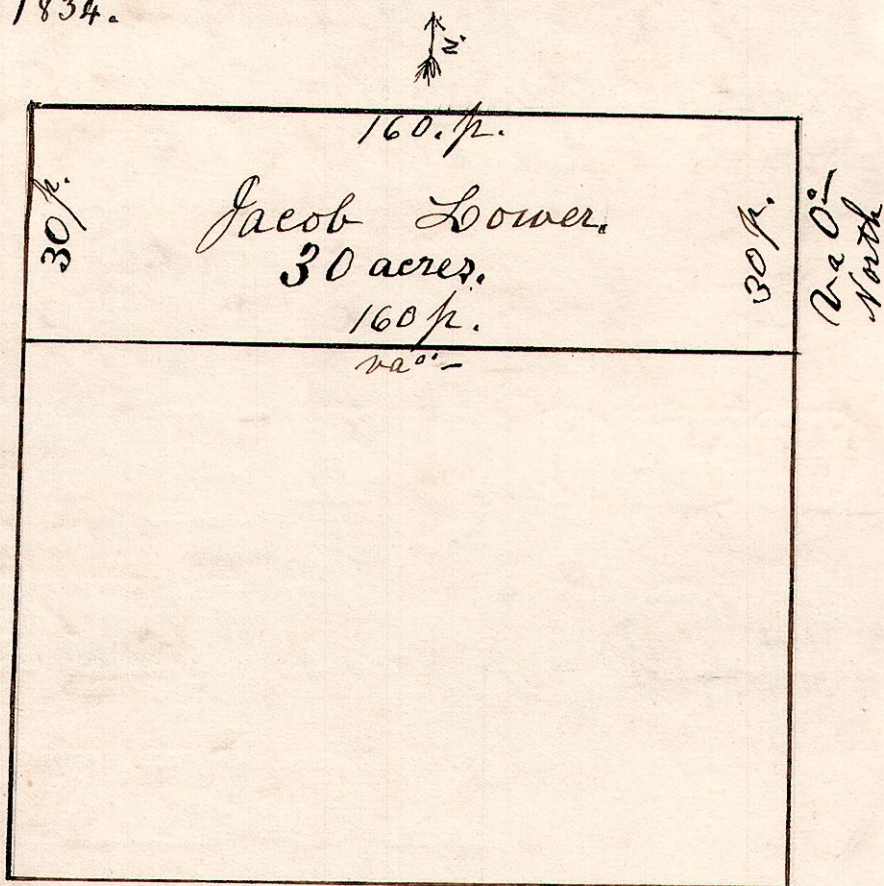
Sold by Martin
Mumma, Situated
on the west 1/2 of
Sec 6. 59. R 5.

$$\begin{array}{r} 24 \\ 12 \\ \hline 48 \\ 24 \\ \hline 24 \end{array}$$

$$\begin{array}{r} 24 \\ 16 \\ \hline 40 \\ 12 \\ \hline 28 \end{array}$$

5. 8. 21.

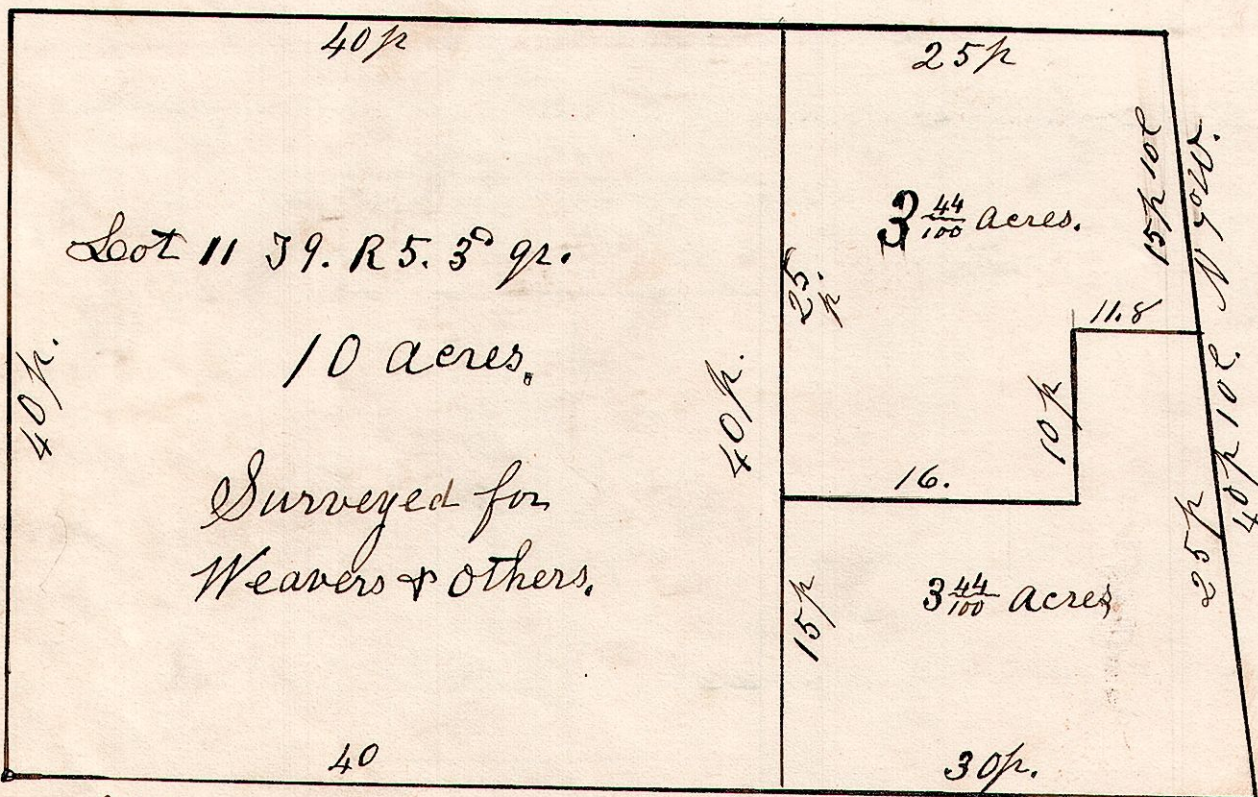
December 12th 1834.



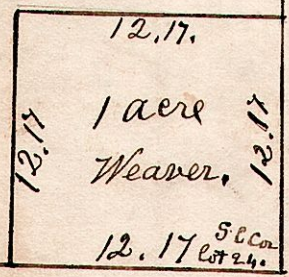
Surveyed the above 30 acres,
December 12th 1834, Being the
north part of the South
East quarter of Section 21.
in Township 8. of Range 5.
Surveyed for Jacob Lower.

5. 9. 11 ³⁰/₁₀₀

April 7th 1834.



5. 9. 24. ³⁰/₁₀₀



S.W. Corner lot 11.